

MANUALE RICAMBI

Road Sweeper S150



INDICE

Group 0

DESCRIPTION	TAV.	PAG.
Chassis	00.00	4
Front axle	00.03	7

Group 1

DESCRIPTION	TAV.	PAG.
Sweeping unit	01.00	9

Group 2

DESCRIPTION	TAV.	PAG.
Braking system	02.00	11

Group 3

DESCRIPTION	TAV.	PAG.
Suction	03.00	13

Group 4

DESCRIPTION	TAV.	PAG.
Fuel tank	04.00	15

Group 5

DESCRIPTION	TAV.	PAG.
Electric system	05.00	17
Electric system for the motor	05.01	19
Electric system armrest	05.02	22
Electric system for the solenoid valve	05.03	24

Group 6

DESCRIPTION	TAV.	PAG.
Silencer	06.00	26

Group 7

DESCRIPTION	TAV.	PAG.
Oil tank	07.00	28

Group 8

DESCRIPTION	TAV.	PAG.
Hopper	08.00	30

Group 9

DESCRIPTION	TAV.	PAG.
Water tank	09.00	32

Group 10

DESCRIPTION	TAV.	PAG.
Cabin	10.00	34

Group 11

DESCRIPTION	TAV.	PAG.
Cofanature	11.00	37

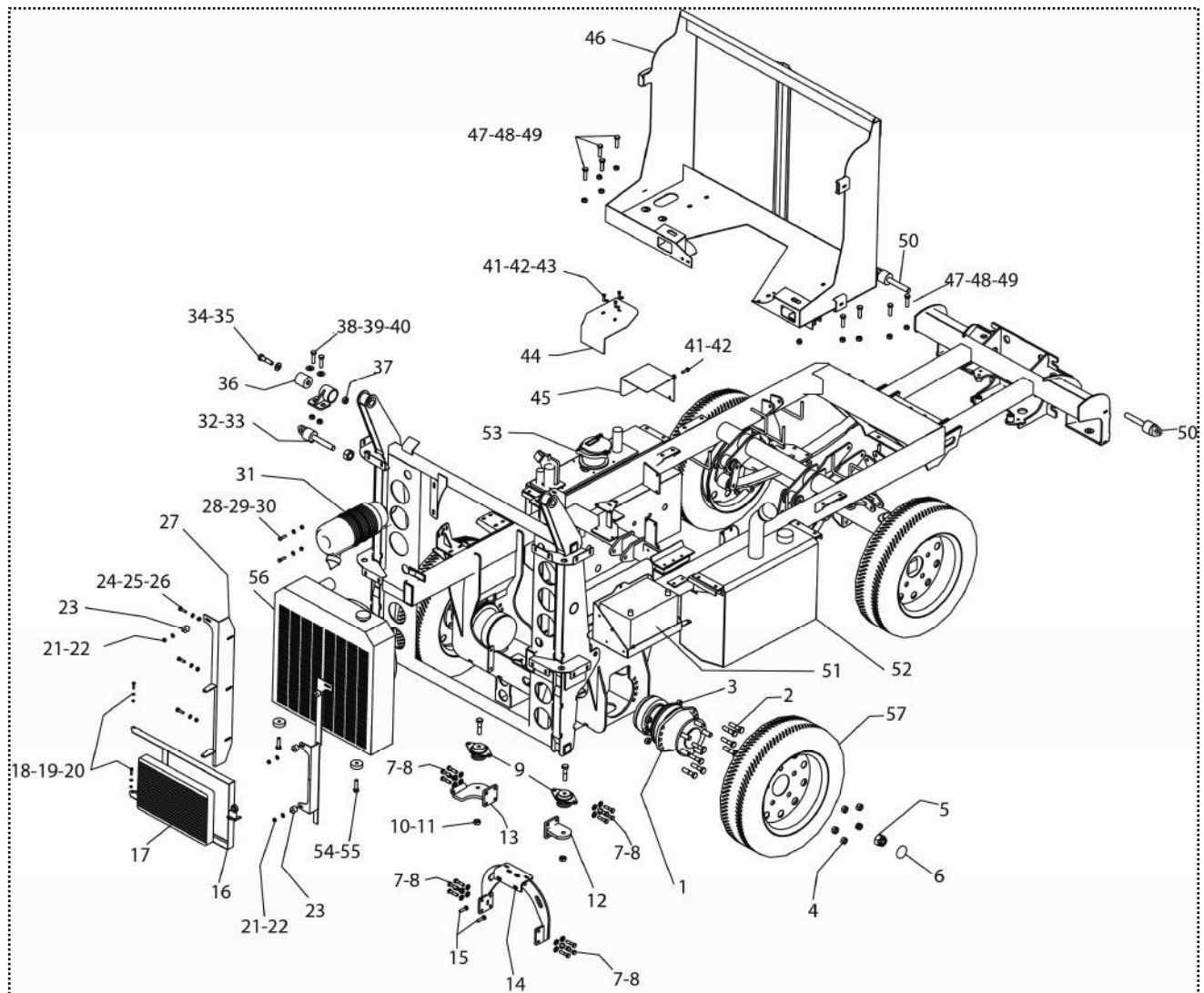
Group 12

DESCRIPTION	TAV.	PAG.
Air conditioning system	12.00	39

Group 13

DESCRIPTION	TAV.	PAG.
Hydraulic system	13.00	41

Tav.00.01_Chassis



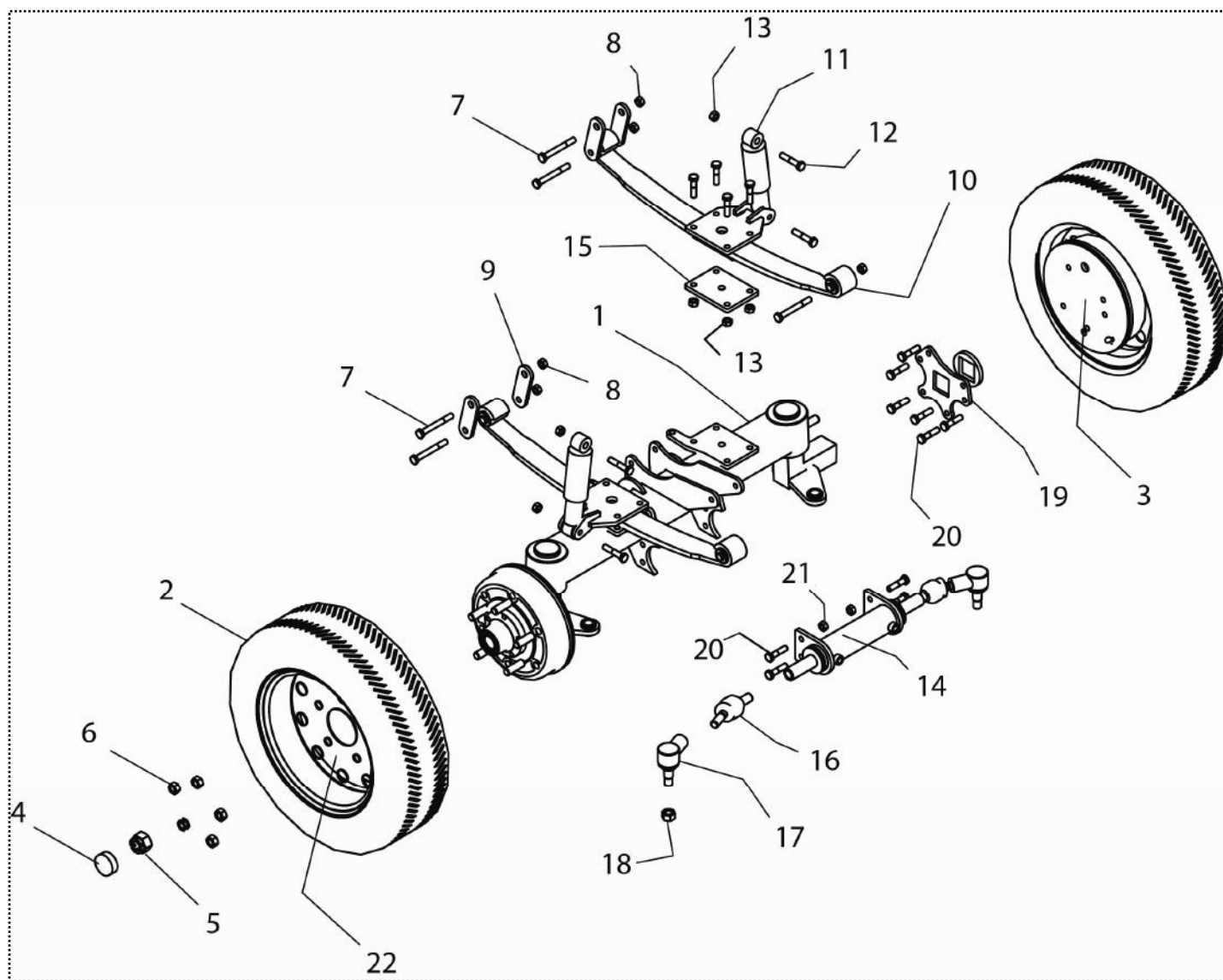
Tav.00.01_Chassis

N.Pos	DESCRIPTION	QUANTITY
1	MO5136- Rotation Motor	2
2	VB278 - Bolt TCEI M14 x 50 x2	20
3	DD258 - Self-locking nut M14 x 2	20
4	DD258 - Self-locking nut M14 x 2	10
5	GH5006 - Self-locking ferrule	2
6	TA5046 – Cap to cover the ferrule	2
7	VE303 – Bolt M12 x 40 x 1.75	20
8	RO206- Washer ø12	20
9	MI5255 - Silent block	2
10	VE344 - Bolt M12 x 130 x 1.75	2
11	DD256 - Self-locking nut M12 x 1.75	2
12	SU5372- motor support (right)	1
13	SU5373 – motor support (left)	1
14	SU5374 – motor support	1
15	VE289 - bolt M10 x 25 x1.5	2
16	SU5375- Support radiator air conditioning	1
17	PW5028 – Radiator air conditioning	1
18	VE245 - Bolt M6 x 25	2
19	RO203 - washer ø6	2
20	DD253 - Self-locking nut M6	2
21	DD254 - Self-locking nut M8	4
22	RO204 - washer ø8	4
23	MI5256 - Silent block radiator	4
24	VE261- bolt M8 x 20	6
25	RO204 - washer ø8	6
26	DD254 - Self-locking nut M8	6
27	SU5376 – support radiator	1
28	VE261 - bolt M8	2
29	RO204 - washer ø8	2
30	DD254 - Self-locking nut M8	2
31	FT5069- Air filter	1
32	PE5114 - Pin	2
33	DD5021 - Self-locking nut M20	2
34	VE345 - Bolt M14 x 100	1
35	RO207 - Washer ø14	1
36	MI5217 - Silent block	1
37	DD258 - Self-locking nut M14	1
38	VE289 - bolt M10 x 25	2
39	RO205 - washer ø10	2
40	DD5025 - Self-locking nut M10	2
41	VE262 - Bolt M8 x 20	5
42	RO204 - washer ø8	5
43	DD254 - Self-locking nut M8	5
44	CA5061 – Carter to cover solenoid valve	1

Tav.00.01_Chassis

N.Pos	DESCRIPTION	QUANTITY
45	CA5062 - Carter cover silencer	1
46	SU5377 – Support water tank	1
47	VE289 - Bolt M10 x 25	10
48	VE289 – washer ø10	10
49	DD5025 - Self-locking nut M10	10
50	PE5115 - Pin ø20	2
51	BT5105 - Battery	1
52	Fuel tank (See Tav.04.00)	1
53	Fuel Oil (See Tav.07.00)	1
54	VE346 – bolt M12 x 80	2
55	PW5028 - thickness	2
56	PW5028 - Radiator	1
57	RT5047 - Wheel	2

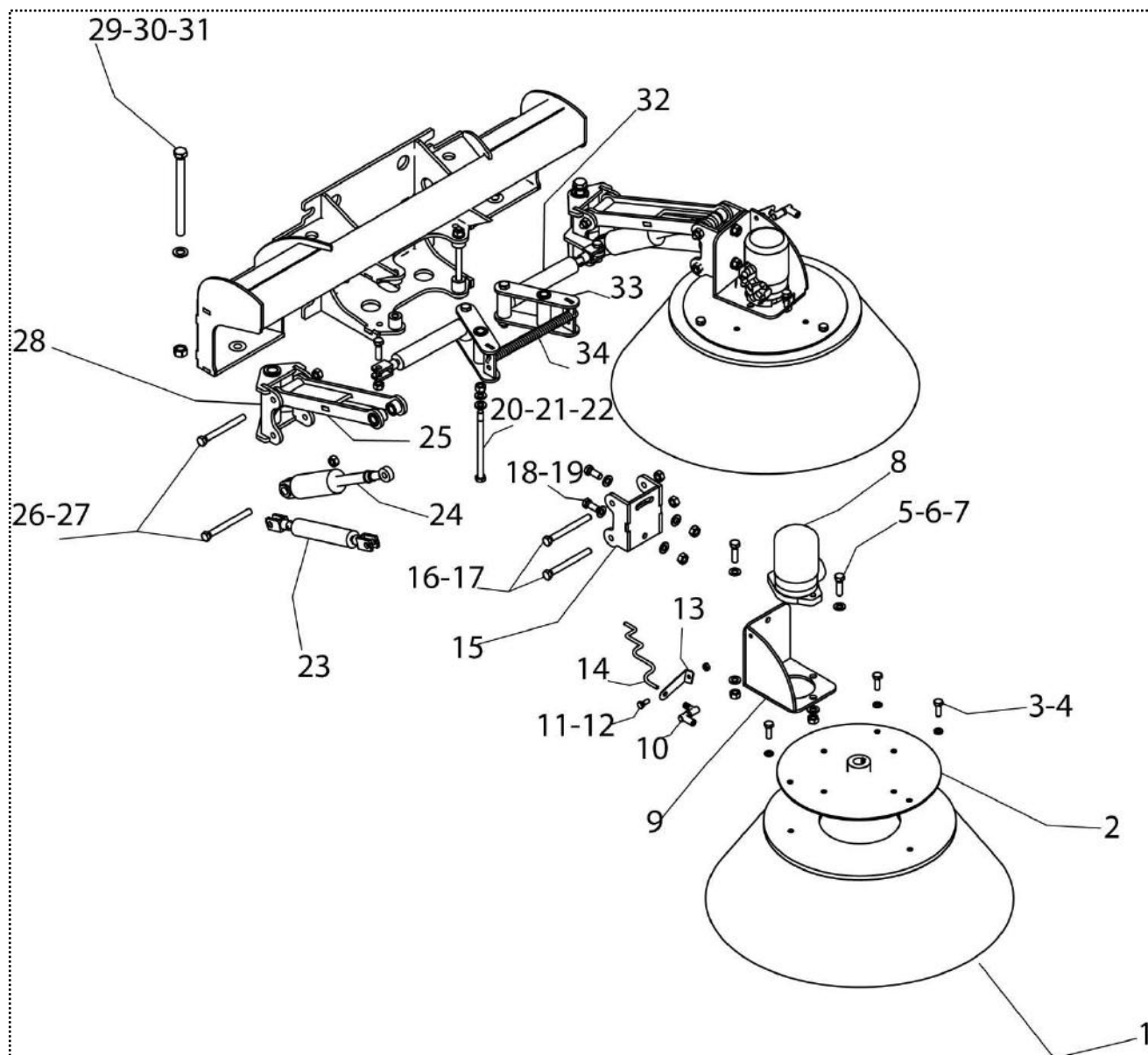
Tav.00.03_Front Axle



Tav. 00.03_Front Axle

N.Pos	DESCRIPTION	QUANTITY
1	AL5062 – Axle structure	1
2	RT5047 – Wheel	2
3	FN5022 - Break	2
4	TA5046 – Cover ferrule	2
5	GH5006 - ferrule	2
6	DD256 - Self-locking nut M12	10
7	VE341 - Bolt M16 x 110 x 2	8
8	DD276 - Self-locking nut M16	8
9	PT5117 - Support	4
10	ML5035 - spring	2
11	AM5005 - shock absorber	2
12	VE346 - Bolt M12 x 80 x 1.75	4
13	DD256 - Self-locking nut M12	4
14	MA5040 – cylinder	1
15	MI5259 - plate	2
16	MI5259 - joint head	2
17	MI5258 - joint head	2
18	DD286 - nut M16 x 2	2
19	FL5055 – flange break	2
20	VE346 – bolt M12	12
21	DD256 - Self-locking nut M12	12

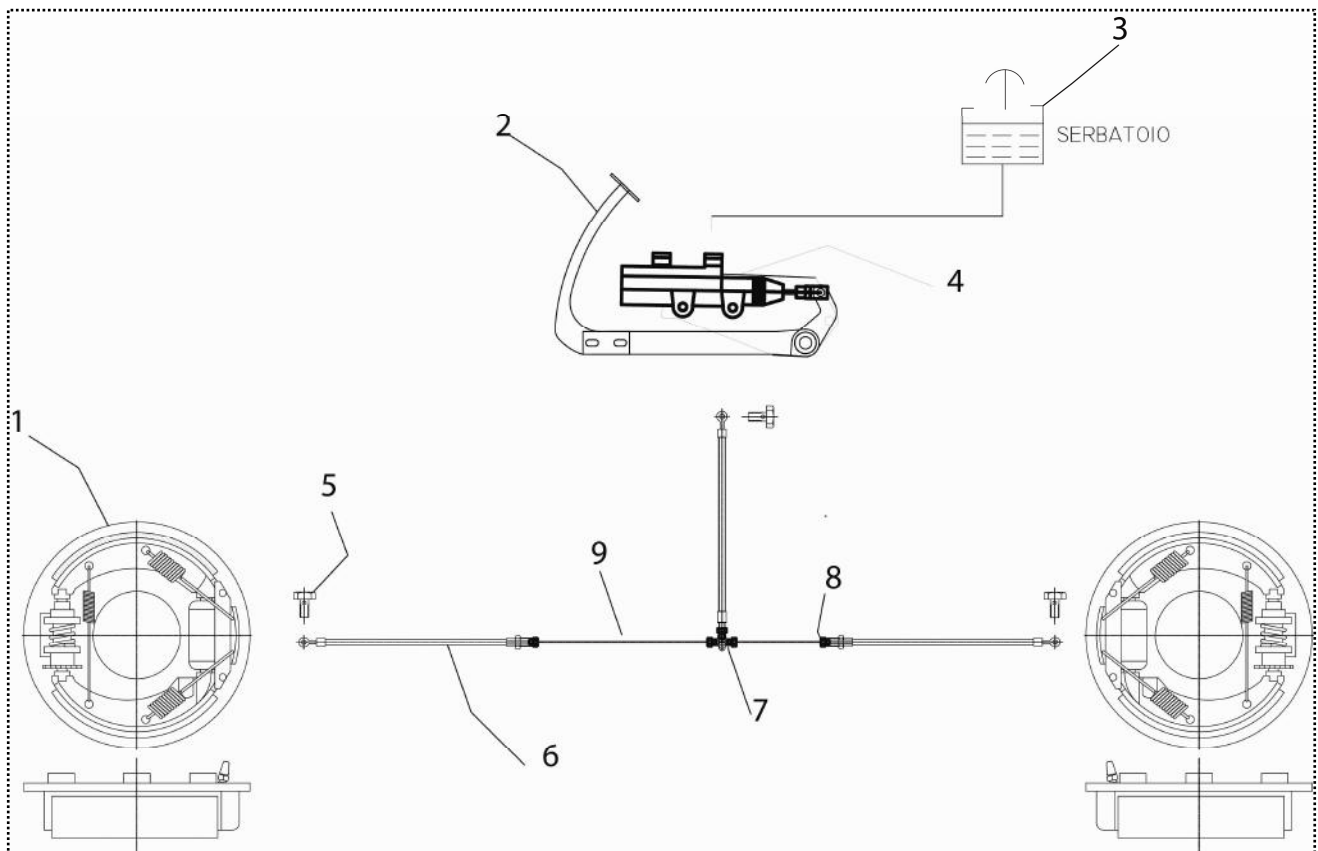
Tav.01.00_Sweeping Unit



Tav. 01.00_Sweeping Unit

N.Pos	DESCRIPTION	QUANTITY
1	SZ5015Y - Brush	2
2	FL5056 – Brush disk	2
3	VE261 – Bolt M8 x 20	6
4	RO204 - Washer ø8	6
5	VE302 - Bolt M12 x 35	4
6	RO206 – washer a ø12	4
7	DD256 - Self-locking nut M12	4
8	MO5137 – Motor brush	2
9	SU5378 – support motor brush	2
10	RB047 – Water nozzle	2
11	VE261 - Bolt M8 x 20	2
12	DD256 - Self-locking nut M8	2
13	ST5065 – support for nozzles	2
14	TB5076 – cable water nozzles	2
15	ST5066 – zipper attach brush motor	2
16	VE315 – Bolt M12 x 120	4
17	DD256 - Self-locking nut M12	4
18	VE289 – Bolt M10 x 25	4
19	DD5025 - Self-locking nut M10	4
20	VE315 - Bolt M12	2
21	RO206 – Washer ø12	2
22	DD256 - Self-locking nut M12	2
23	TI5050 – regulation brush	2
24	MA5038 – Cylinder lifting brush	2
25	LV5137 - Biella	2
26	VE315 - Bolt M12	4
27	DD256 - Self-locking nut M12	4
28	SU5379 – zipper brush	2
29	VE339 – Bolt M16	2
30	RO216 - washer ø16	2
31	DD276 - Self-locking nut M16	2
32	MA5041 – cylinder	2
33	SU5380 – attach brush springs	2
34	ML5036 – spring	1

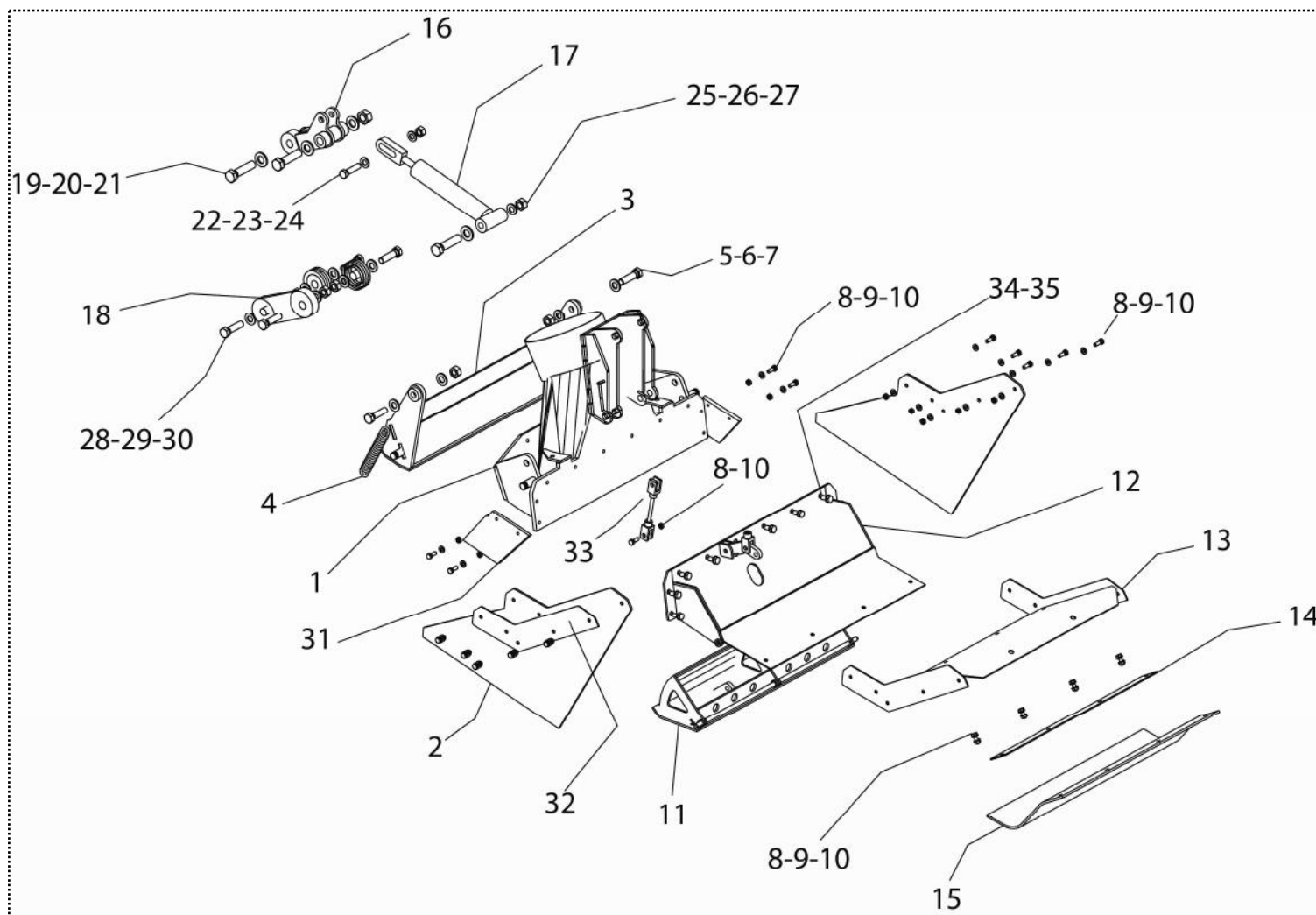
Tav. 02.00_ Braking system



Tav. 02.00_ Braking system

N.Pos	DESCRIPTION	QUANTITY
1	FN5022 – Braking	2
2	LV5138 – Braking pedal	1
3	SB5055 – Oil tank	1
4	PO5032 – Braking pump	1
5	RC5124 - Nipples	3
6	TU5172 – Flexible hose	2
7	RC5125 - TEE 3 vie	1
8	RC5143 - Juncion	2
9	TU5250 – hose rigid	2

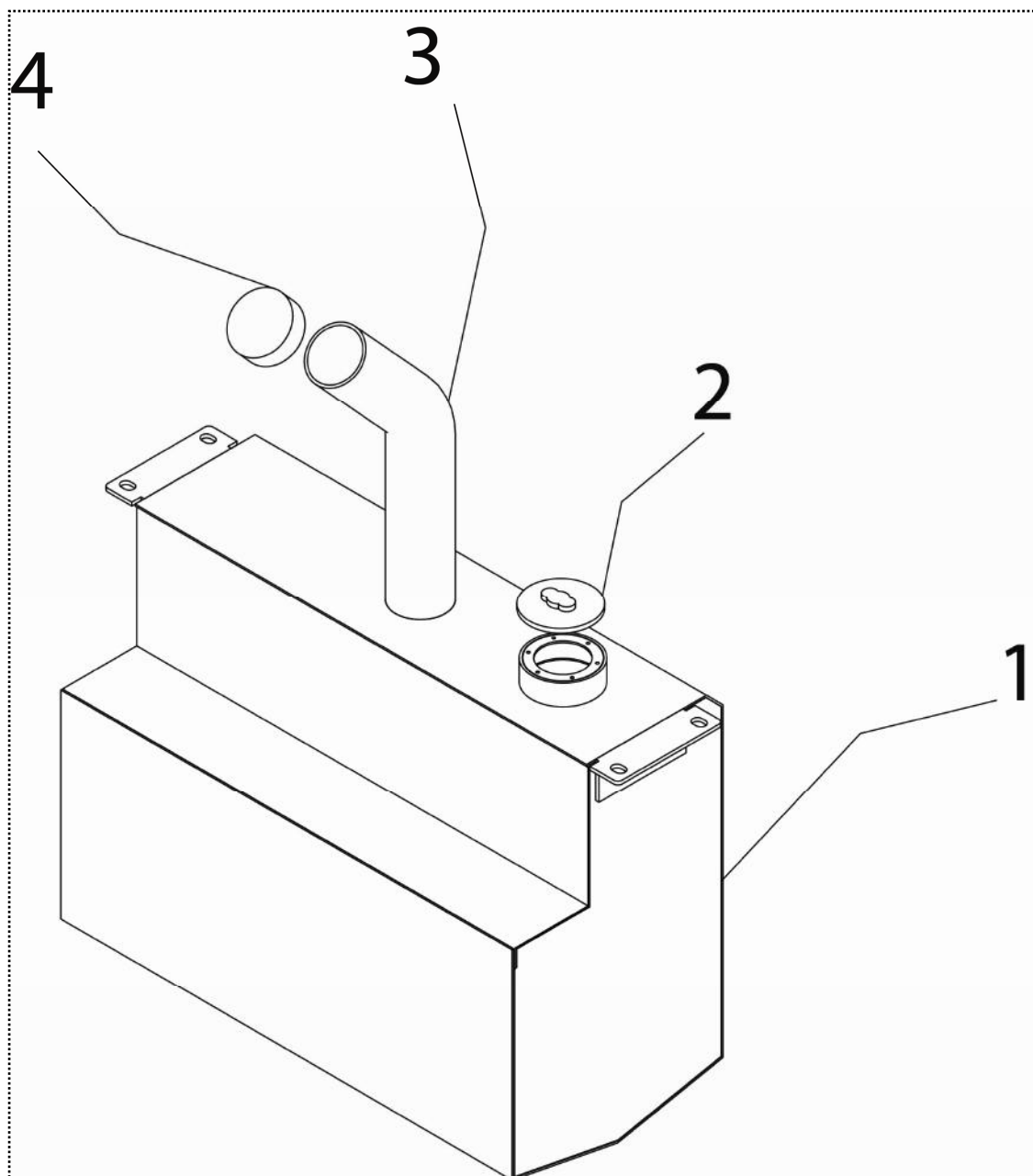
Tav. 03.00_ Suction



Tav. 03.00_ Suction

N.Pos	DESCRIPTION	QUANTITY
1	TP5126 - suction	1
2	BP5103 - rubber	2
3	TP5127 - Flap rear	1
4	ML5037 - spring	2
5	VE304 - bolt M12 x 50	2
6	RO218 - washer ø12	2
7	DD256 - Self-locking nut M12	2
8	VE260 - Bolt M8 x 16	13
9	RO5035 - washer ø8	13
10	DD254 - Self-locking nut M8	13
11	TP5128 - Flap internal	1
12	TP5129 – front flap	1
13	SU5381 – support rubber	2
14	PT5236 - fixer	1
15	BP5104 - rubber	1
16	LV5139 – lever for attach cylinder	1
17	MA5046 - cylinder	1
18	LV5140 - lever	2
19	VE347 - bolt M16 x 50	2
20	RO208 - washer ø16	2
21	DD276 - Self-locking nut M16	2
22	VE291 - bolt M10	1
23	RO205 - washer ø10	1
24	DD5025 - Self-locking nut M10	1
25	VE314 - bolt M12 x 110	1
26	RO218 - washer ø12	1
27	DD256 - Self-locking nut M12	1
28	VE304 - bolt M12 x 50	4
29	RO218 - washer ø12	4
30	DD256 - Self-locking nut M12	4
31	BP5105 - rubber	2
32	LM5406 – fixer rubber	2
33	TI5051 – lifting flap	1
34	VE263 – Bolt M8 x 30	10
35	RO204 - washer ø8	10

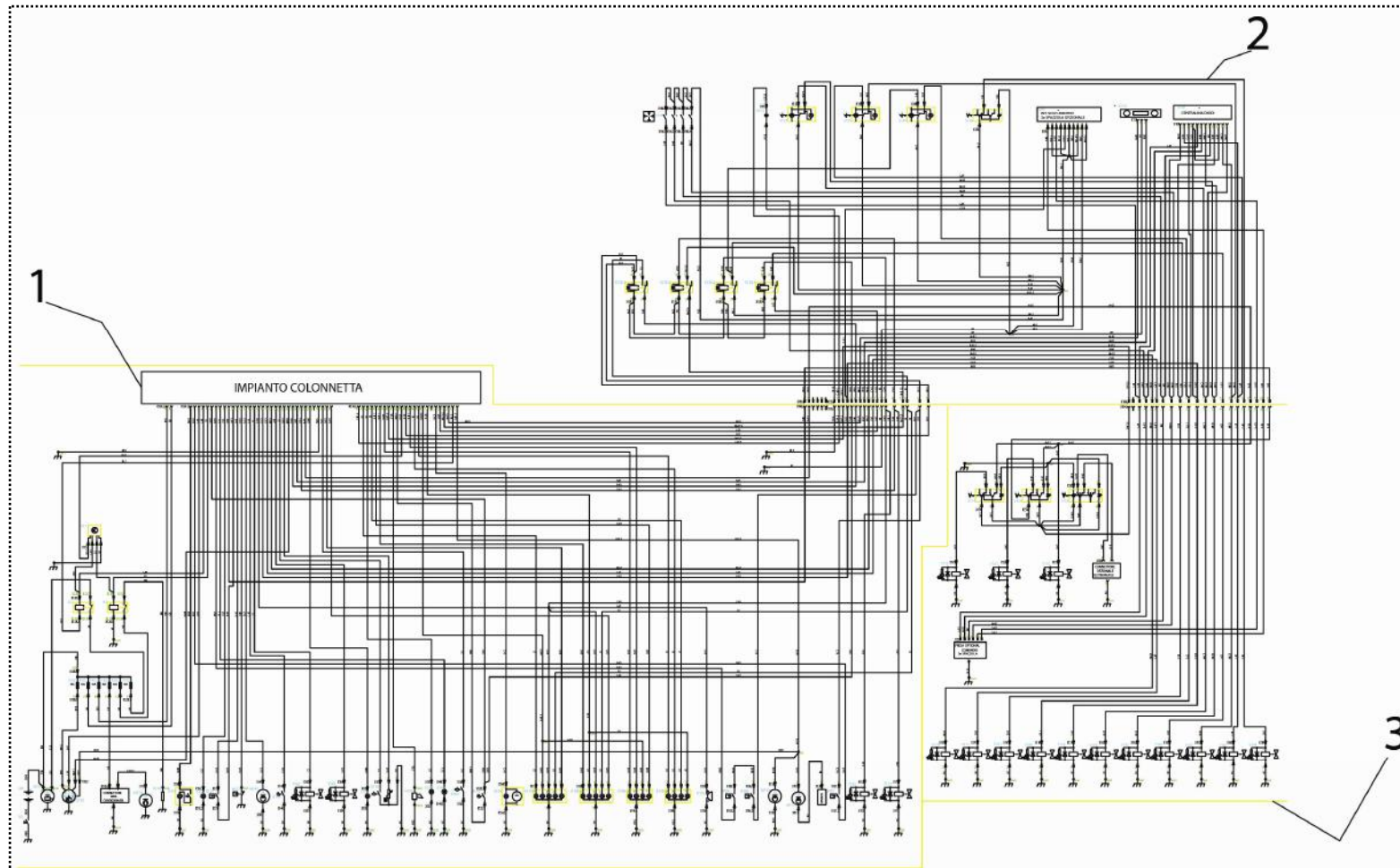
Tav. 04.00_Fuel tank



Tav. 04.00_Fuel tank

N.Pos	DESCRIPTION	QUANTITY
1	SB5056 – Fuel tank	1
2	MI5260 – level fuel	1
3	TB5089 – refilling hose	1
4	TA5048 – cover for hose	1

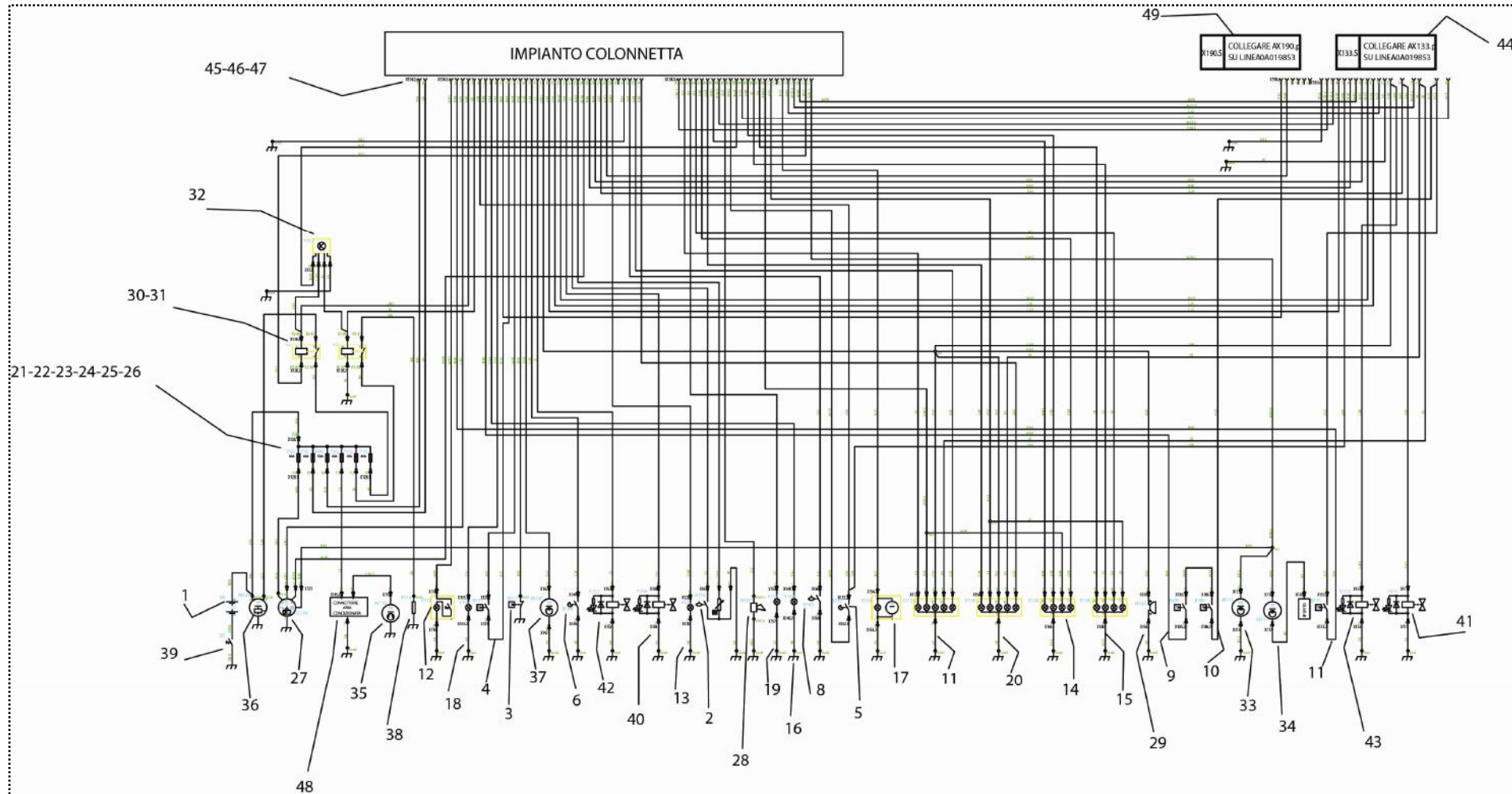
Tav. 05.00_ Electric system



Tav. 05.00_ Electric system

N.Pos	DESCRIPTION	QUANTITY
1	Electric system motor (see Tav.05.01)	
2	System motor (see Tav.05.02)	
3	System solenoide valve (see Tav.05.03)	

Tav. 05.01_Motor electric system



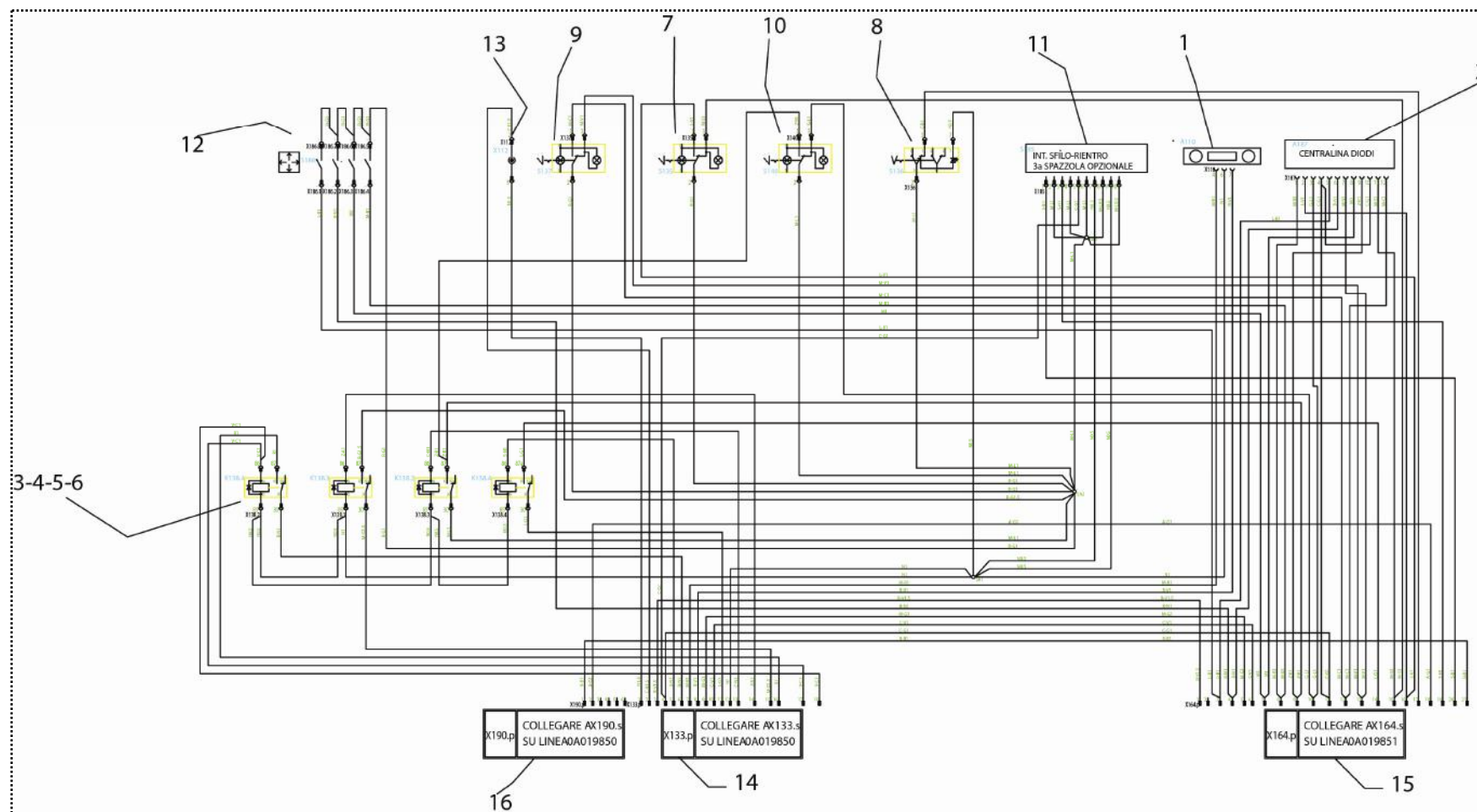
Tav. 05.01_Schema elettrico motore

N.Pos	Descrizione	Q.tà
1	BT5015 – battery	
2	MI5260 – Indicator fuel level	
3	PY5326- pressure switch low presson motor oil	
4	MP659 – sensor temperature water	
5	IN5005 – micro	
6	MI5265 – micro sit	
7	PY5337 – stop light	
8	GL5007 – float water level	
9	PY5337 – stop light	
10	PY5337 – stop light	
11	PY5334 – rear light left	
12	PY5339 - plafoniera	
13	PY5331 – light working	
14	PY5333 – front light left	
15	PY5332 – front light right	
16	PY5331 – front working light left	
17	PY5328 - rotating light	
18	PY5331 – working light	
19	PY5338 – plate light	
20	PY5335 – rear light right	
21	PY1058 – start fuse	
22	PY5103 – candles fuse	
23	PY5208 - fuse	
24	PY5103 – general fuse	
25	PY1058 – start fuse	
26	PY5103 – general fuse	
27	PY5342 - alternator	
28	PY5340 - horn	
29	PY5341 - siren	
30	SL009 – relay candles	
31	SL010 – start relay	
32	PY5343 – candles timer	
33	PO030 – fuel pump	
34	PO5038 – pump clean window	
35	MO5139 - conditioner compressor	
36	MO5129 – start motor	
37	PO5038 – pump clean window	
38	MP5179 - candles	
39	PY5344 – take off batteries	
40	VO5038 – solenoide valve	
41	VO5039 – solenoide valve	
42	VO5040 – solenoide valve	
43	VO5041 – solenoide valve	

Tav. 05.01_Schema elettrico motore

N.Pos	Descrizione	Q.tà
44	Connettore interfaccia lato bracciolo	
45	Connettore interfaccia impianto colonnetta	
46	Connettore interfaccia impianto colonnetta	
47	Connettore interfaccia impianto colonnetta	
48	Connettore aria condizionata	
49	Connettore interfaccia lato bracciolo	

Tav. 05.01_ Electric system armrest



Tav. 05.01_ Electric system armrest

N.Pos	Descrizione	Q.tà
1	PY5345 - Autoradio	
2	PY5346 - unit diodes	
3	SL012 – relay to stop the light	
4	SL012 – relay for vacuum	
5	SL012 - relay	
6	SL012 – relay turbin	
7	IN5118 – switch right brush	
8	IN5117 – switch rotation front brush	
9	IN5115 – switch left brush	
10	IN5107 – switch lifting vacuum	
11	IN5114 – switch optional	
12	IN5119 switch to moove the third brush	
13	PY5347 – light cigarettes	
14	Connector motor	
15	Connector colenoid valve	
16	Connector motor	

1-2-3

4-8-12

18

19

10

5

13

9

16

15

14

6

7

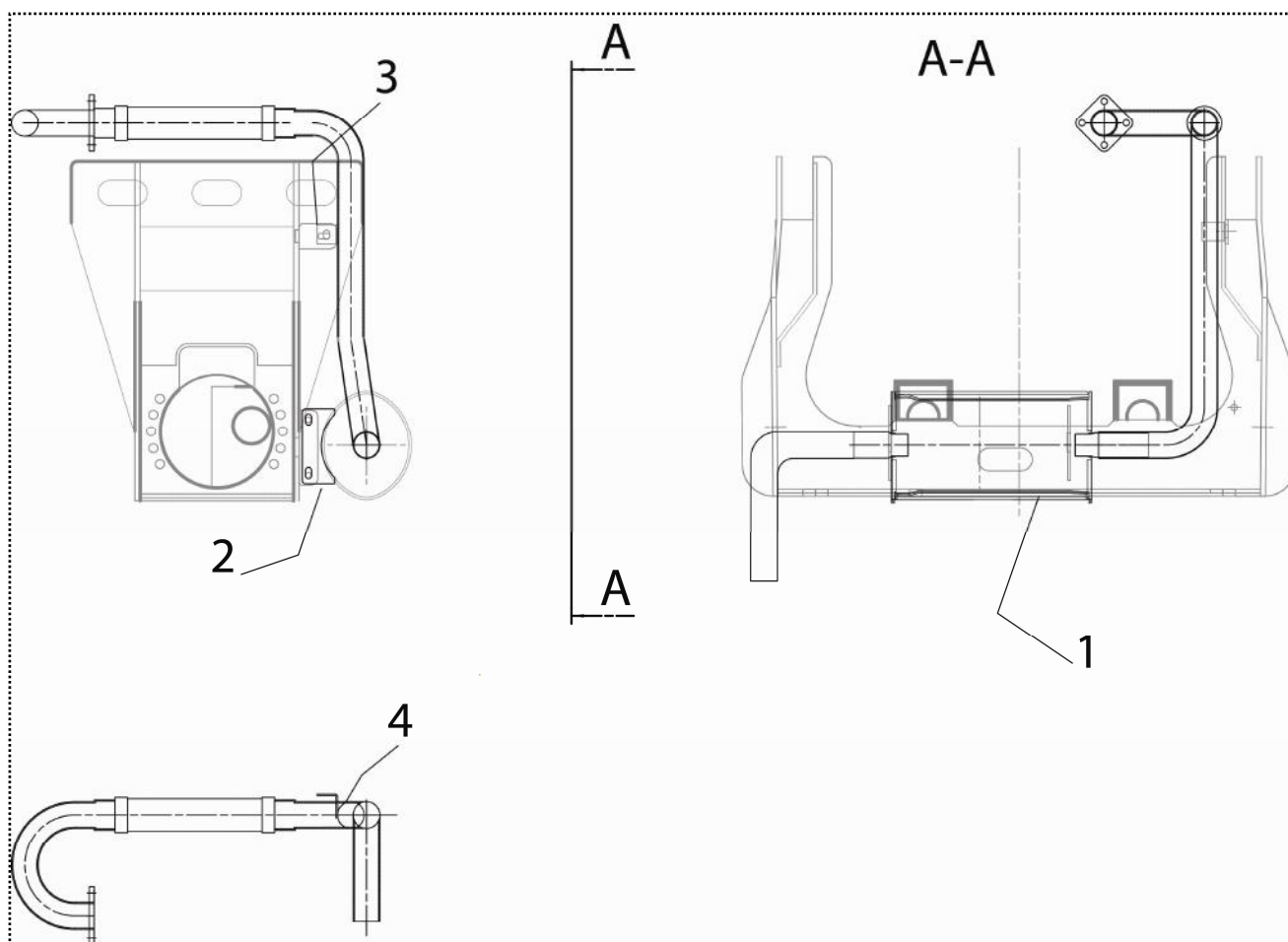
17

COLLEGARE AX164.p
SU LINEA0A019853

Tav. 05.03_ Electric diagram solenoid valve

N.Pos	Description	Quantity
1	IN5111 – switch water pump	
2	IN5112 – switch recovery water	
3	IN5113 – switch high pressure	
4	VO5042 – solenoide valve	
5	VO5034 – solenoide valve vacuum	
6	VO5034 – solenoide valve brush left	
7	VO5034 – solenoide valve brush left	
8	VO5034 – Solenoide valve general	
9	VO5044 – solenoide valve general	
10	VO5034 – solenoide valve to lift the box	
11	VO5034 – solenoide lower box	
12	VO5045 – solenoide valve water pump	
13	VO5034 – solenoide valve vacuum	
14	VO5028 – solenoide valve fan	
15	VO5034 – solenoide valve front right brush	
16	VO5034 – solenoide valve front right brush	
17	VO5034 – solenoide front brush	
18	Connector solenoide valve to moove third brush (optional)	
19	Connector arm	
20		

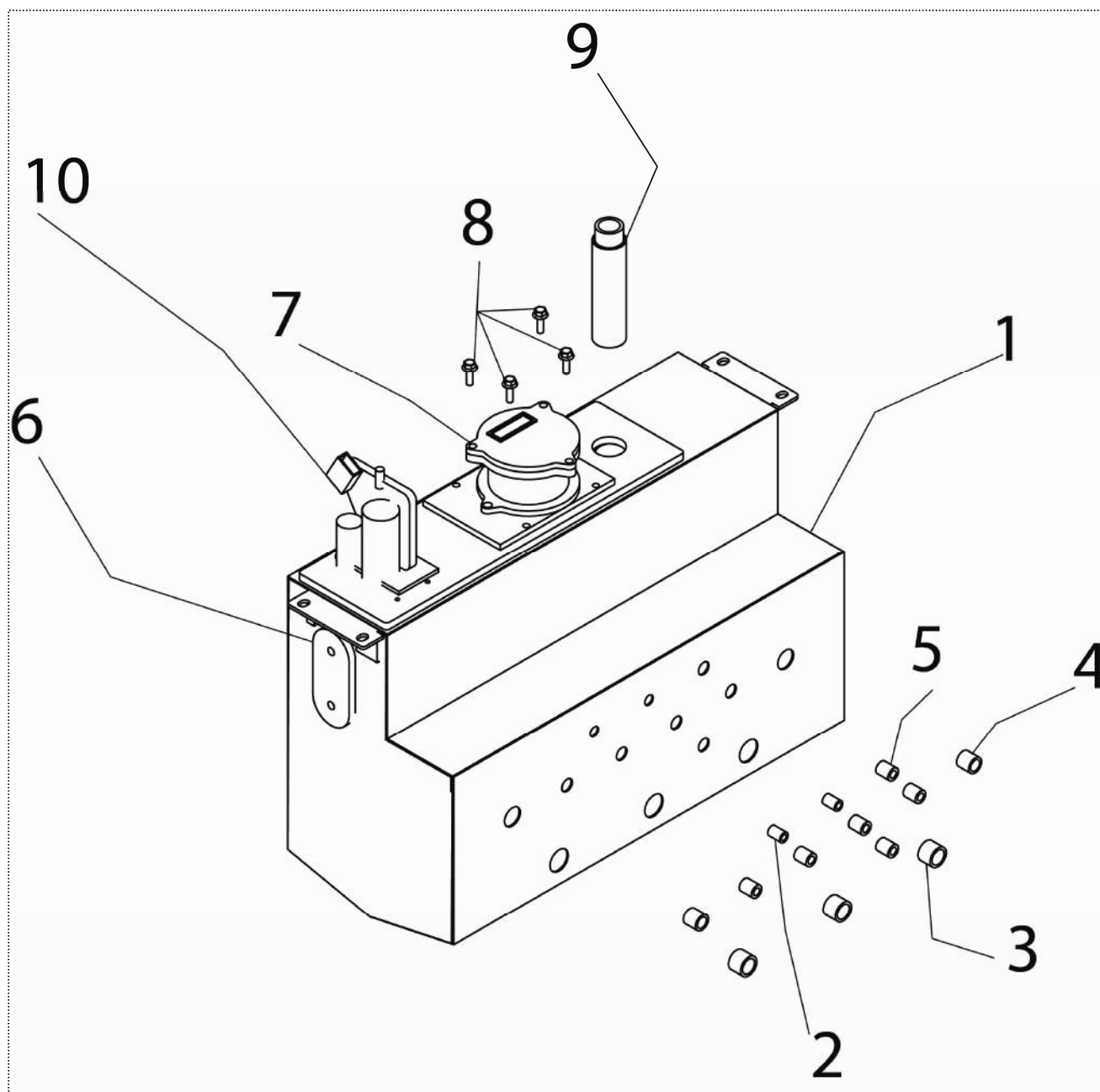
Tav. 06.00_Silencer



Tav. 06.00_Silencer

N.Pos	Description	Quantity
1	MP5177- silencer	1
2	PT5119 – plate to fix the silencer	2
3	PT5120 – plate over to fix the silencer	1
4	MP5178 – hose silencer	1

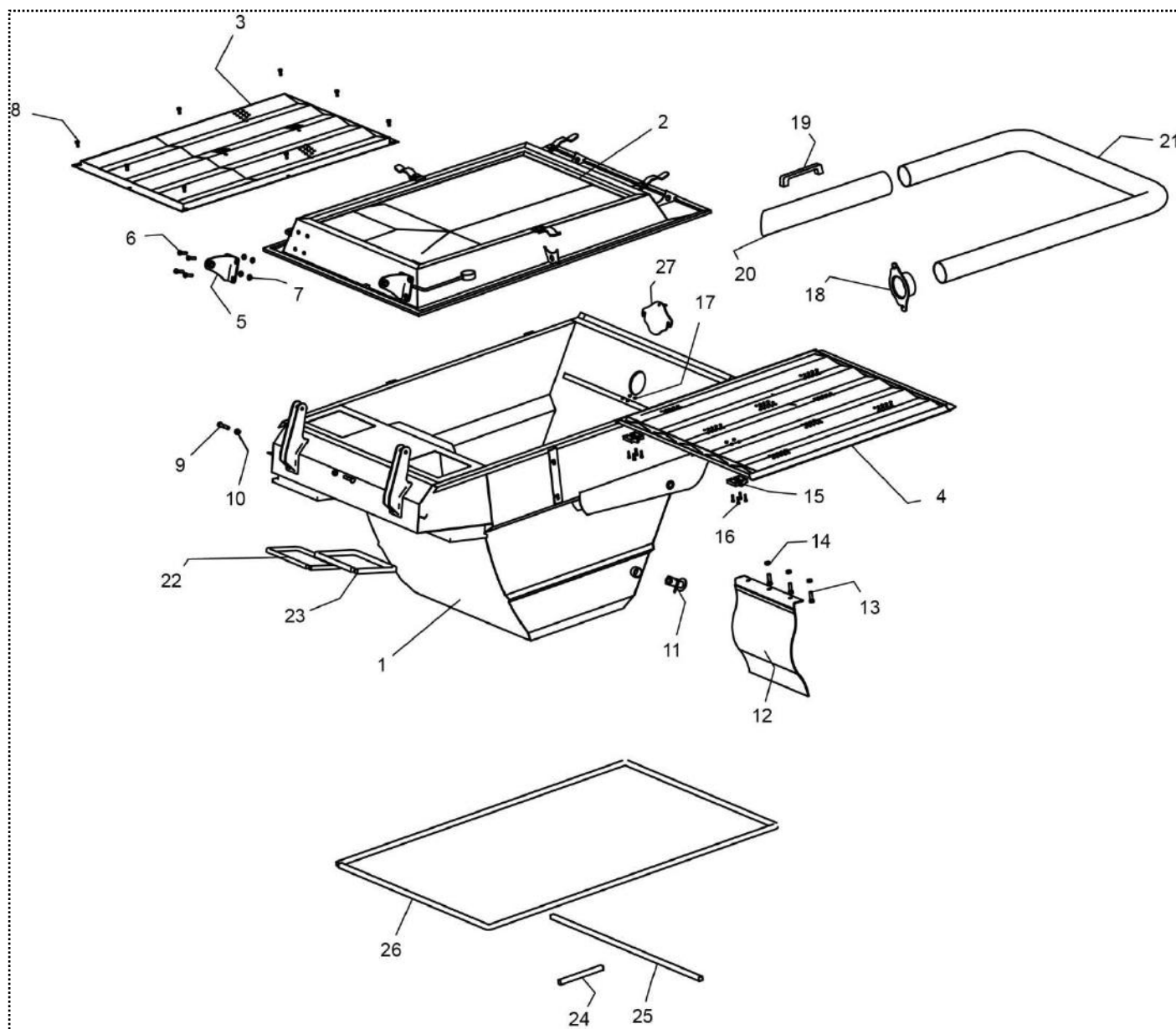
Tav.07.00_ Oil tank



Tav.07.00_ Oil tank

N.Pos	Description	Quantity
1	SB5057 – oil tank	1
2	Handle 1/4"	2
3	Handle 3/4"	3
4	Handle 1/2"	2
5	Handle 6/8"	6
6	MI5261 – indicator oil level	1
7	FT5071 – Oil filter	1
8	VE282 - Bolt M 10 x 30	4
9	Hose refill	1
10	PO5033 - pump	1

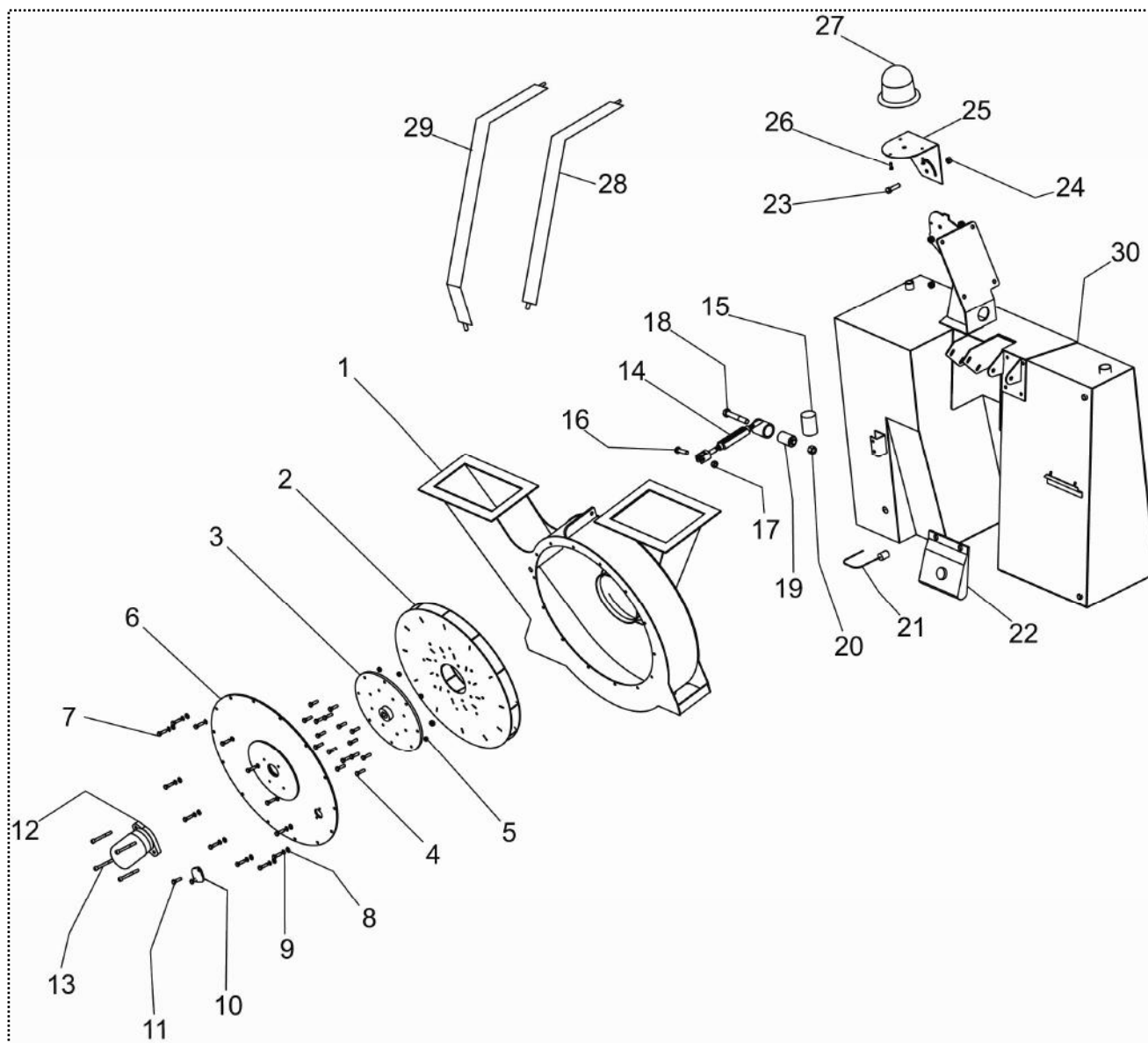
Tav.08.01_ Hopper



Tav. 08.01_Hopper

N.Pos	Description	Quantity
1	TP5130 - tank	1
2	CO5079 - cover	1
3	FT5072 – over filter	1
4	FT5073 – below filter	1
5	ST5067 – zip cover	2
6	VE282 - bult M10 x 30	8
7	DD5025 – self-locked nut M10	8
8	VE261 - Bult M8 x 20	8
9	VE304 - bult M12 x 50	2
10	DD256 - self-locked nut M12	2
11	RB5000 - faucet	1
12	BP5106 - rubber	1
13	VE260 - bult M8 x 16	3
14	RO204 - washer ø8	
15	MV5104 - zip	2
16	VE243 - bult M6 x 15	8
17	DD253 - self-locked nut M6	8
18	FL5157 - flange	1
19	MN5022 - handle	1
20	TB5090 – hose	1
21	TB5091 – flexible hose	1
22	GR5127 - gasket	1
23	GR5127 - gasket	1
24	GR5128 – gasket cover	1
25	GR5128 – gasket cover	1
26	GR5128 – gasket cover	1
27	LM5407 – cover on hose	1

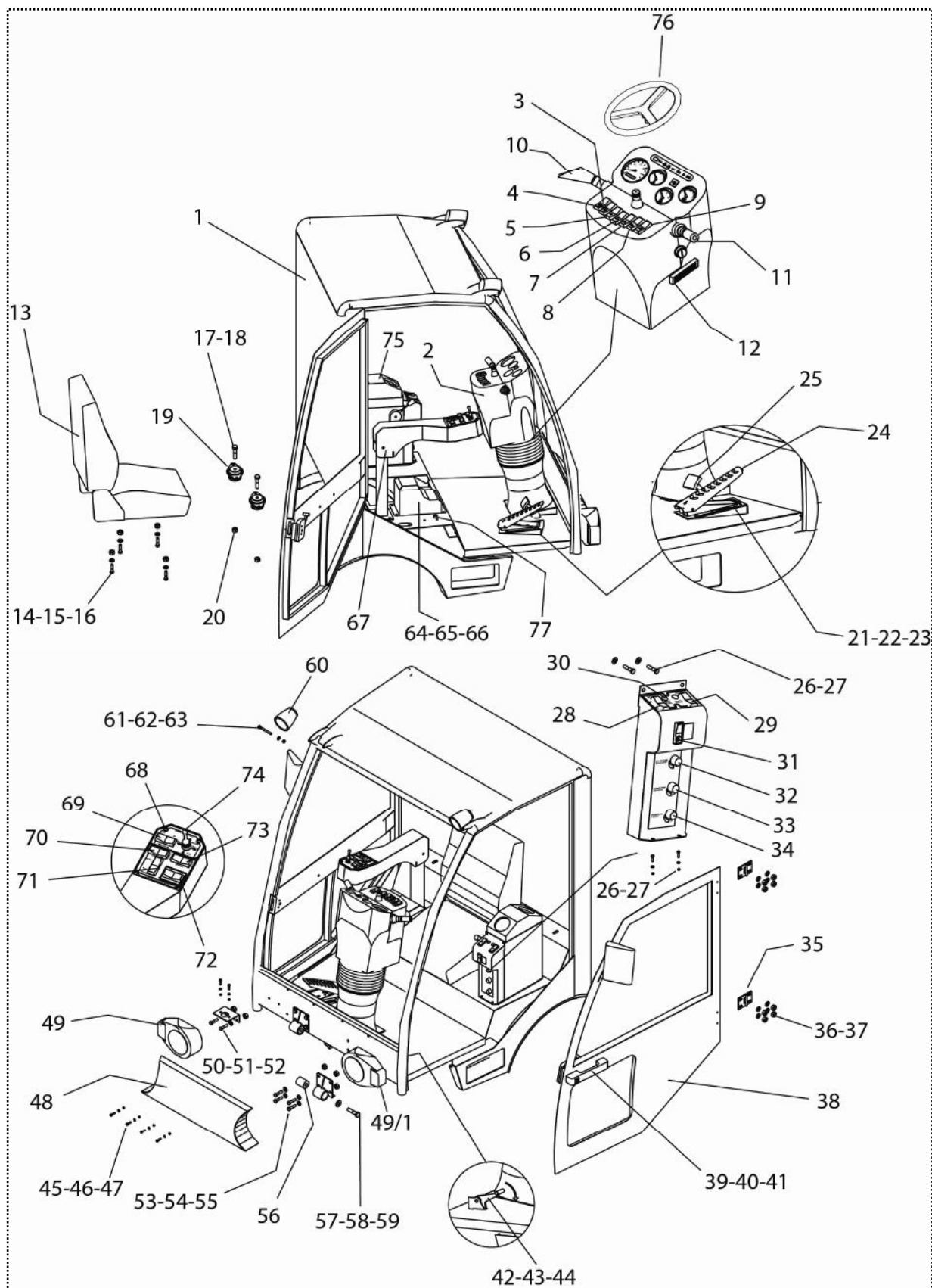
Tav. 09.00_Water tank



Tav. 09.00_ Water tank

N.Pos	Description	Quantity
1	TP5131 - Coclea	1
2	FU5014 - turbine	1
3	FL5058 – flange turbine motor	1
4	VE263 - bult M8 x 30	16
5	VE263 – self-locked nut M8	16
6	LM5408 – cover turbine	1
7	VE261 - bult M8 x 20	14
8	RO204 – washer ø8	14
9	RO5035 - washer ø8	14
10	CO5080 - cover	1
11	VE261 - bult M8 x 20	1
12	MO5138 – motor turbine	1
13	VE272 - bult M8 x 100	4
14	TI5052 – tie rod	1
15	FT5074 - filter	1
16	VE303 - bult M12 x 40	1
17	DD256 - self-locked nut M12	1
18	VE348 - bult M16 x 130	1
19	MI5262 - Silent block	1
20	DD276 - self-locked nut M16	1
21	GL5007 – float level water	1
22	MI5263 – water to clean the window	1
23	VE282 - bult M10 x 30	1
24	DD206 - nut M10	1
25	SU5382 – support flashing	1
26	VE244 - bult M6 x 20	1
27	PY5328 - flashing	1
28	ST5068 – fixed axel	1
29	ST5069 – fixed axel	1
30	SB5058 – water tank	1

Tav. 10.00_ Cabin



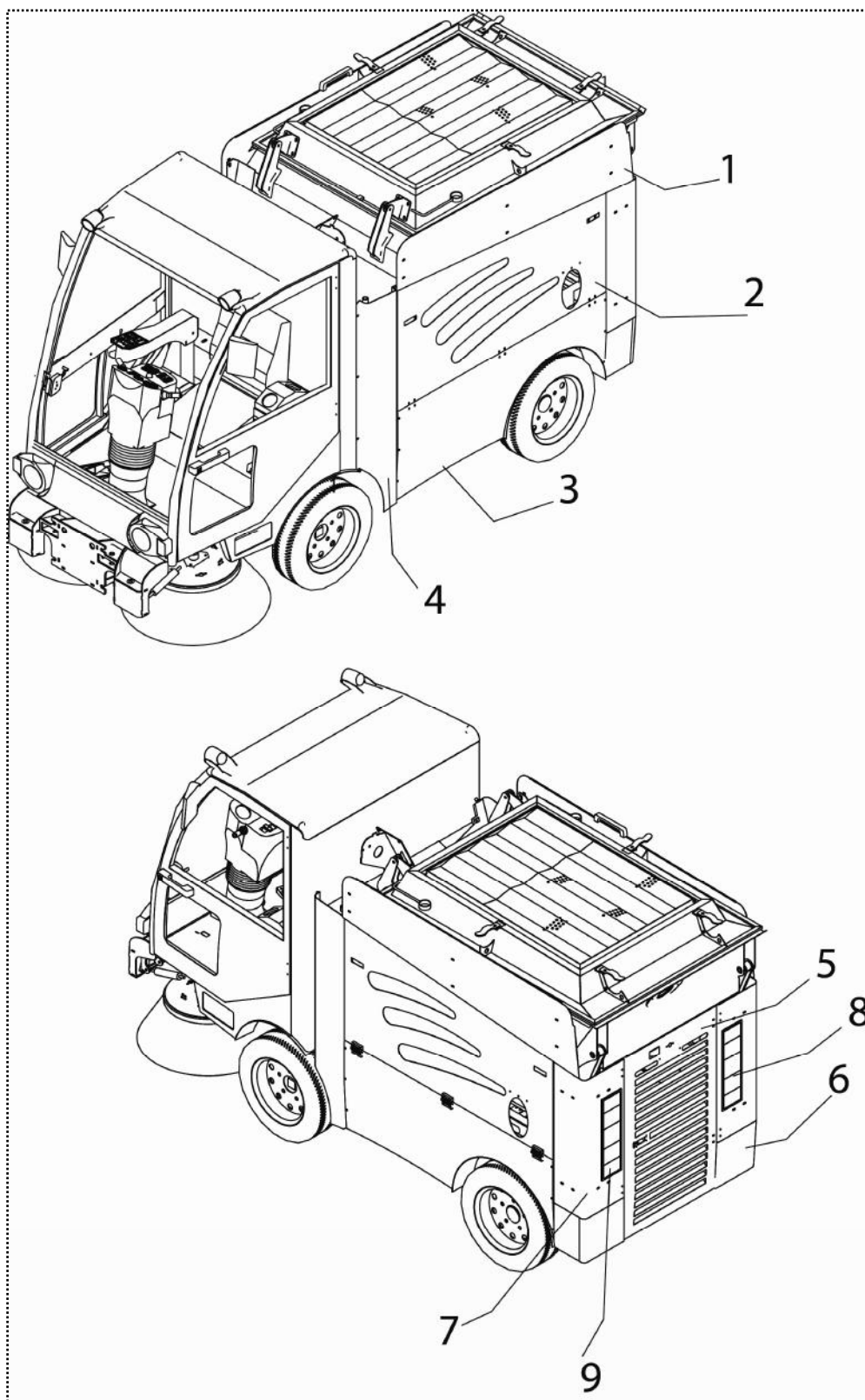
Tav. 10.00_ Cabin

N.Pos	Description	Quantity
1	TP5132 - Cabin	1
2	MI5264 – Steering column	1
3	IN5102 – button turn on fan	1
4	IN5103 – button rear light	1
5	IN5104 – button light	1
6	IN5105 – button windscreen wipers	1
7	IN5106 – button emergency lights	1
8	IN5107 – button lifting-lowering box	1
9	IN5108 – button brake	1
10	IN5109 – lever left	1
11	IN5110 – lever right	1
12	PY5329 – fuses box	1
13	MI5265 - sit	1
14	VE264 - bult M8 x 35	4
15	RO204 - washer ø8	4
16	DD254 – self-locked nut M8	4
17	VE340 - bult M16 x 100	2
18	RO219 - washer ø16	2
19	MI5266 - Silent block	2
20	DD276 - self-locked nut M16	2
21	VE261 - bult M6x20	4
22	DD276 - self-locked nut M6	4
23	RO203 - washer ø6	4
24	LV5142 - pedal	1
25	LV5143 – brake pedal	1
26	VE243 - bult M6 x 16	3
27	RO203 - washer ø6	3
28	IN5111 – button water pump	1
29	IN5112 - faucet	1
30	PY5330 - light	1
31	IN5113 – button high pressure	1
32	VP5018 - faucet	1
33	VP5018 – brush water faucet	1
34	VP5018 – third brush water faucet	1
35	MV5105 - hinge	4
36	VE280 - bult M10	16
37	DD263 - nut	16
38	LM5409 rh – LM5410 lh - door	2
39	MN5023 – handle door	2
40	VE243 - bult M6	4
41	RO203 - washer ø6	4
42	LV5144 - pedal	1
43	VE307 - bult M12 x 65	1
44	DD256 - self-locked nut M12	1

Tav. 10.00_ Cabin

N.Pos	Description	Quantity
45	VE261 - Bolt M8x20	4
46	RO204 - washer ø8	4
47	DD254 – self-locked nut M8	4
48	LM5411 – plate front	1
49	PY5332 – RH front light	1
49/1	PY5333 – LH front light	1
50	VE261 - Bolt M8 x 20	4
51	RO204 - washer ø8	4
52	DD254 – self-locked nut M8	4
53	VE263 - Bolt M8 x 30	8
54	RO204 - washer ø8	8
55	DD254 – self locked nut M8	8
56	MI5267 - Silent block	2
57	VE346 - Bolt M12 x 80	2
58	RO218 - washer ø12	2
59	DD256 – self-locked nut M12	2
60	PY5331 – working light	2
61	VE349 - bolt M 6 x 110	2
62	RO203 - washer ø6	2
63	DD253 – self-locked nut M6	2
64	CC5081 - cover	1
65	VE261 - bolt M8 x 20	4
66	DD254 – self-locked nut M8	4
67	LM5412 – armrest	1
68	VE225 - bolt M5	4
69	IN5114 translation (optional)	1
70	IN5115 - Button output - return brush LH	1
71	IN5116 - Button up - lowers brushes and vacuum head	1
72	IN5117 - Button ON – OFF sweeping unit	1
73	IN5118 – Button out – return brush DH	1
74	IN5119 - joystick	1
75	KIT5608 – air conditioning	1
76	MI5268 - steering	1
77	VP5019 – regulator brush	1

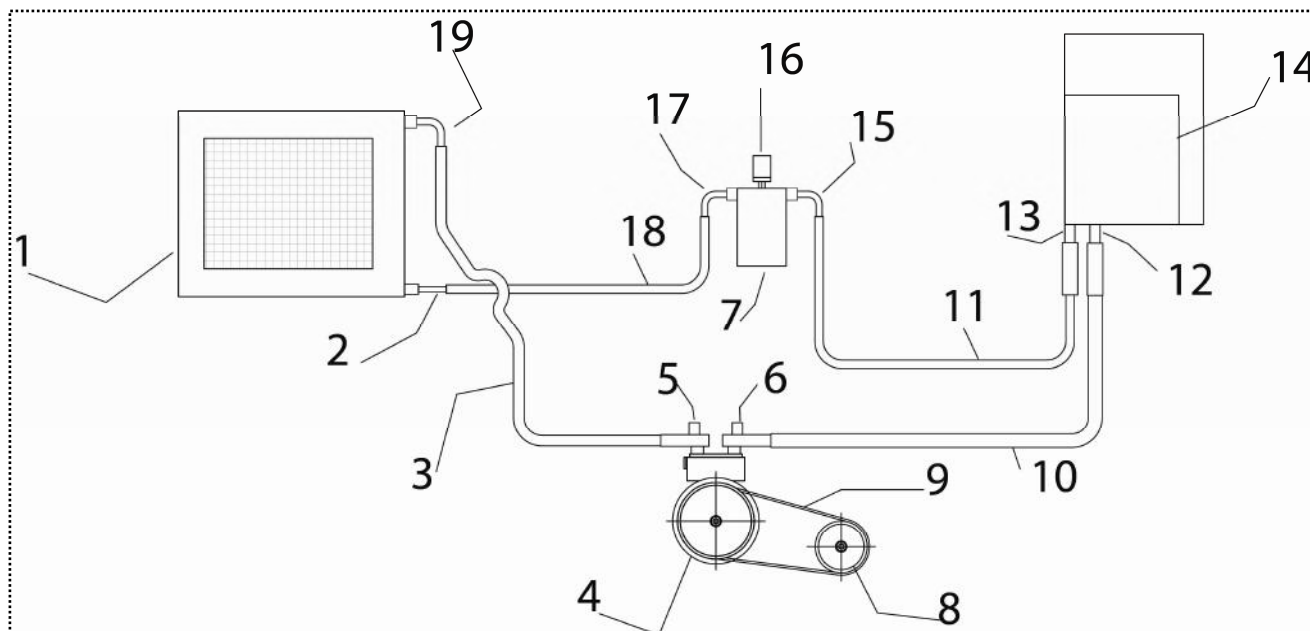
Tav. 11.00_ Enclosures



Tav. 11.00_ Enclosures

N.Pos	Description	Quantity
1	LM5413 – Side cover top	2
2	LM5414 – Central cover top	2
3	LM5415 - Fairing lower	2
4	LM5416 – Front pillar	2
5	LM5417 – radiator cover	1
6	LM5418 - Below fairing	2
7	LM5419 – carter light	2
8	PY5334 - Right tail light	1
9	PY5335 - Left tail light	1

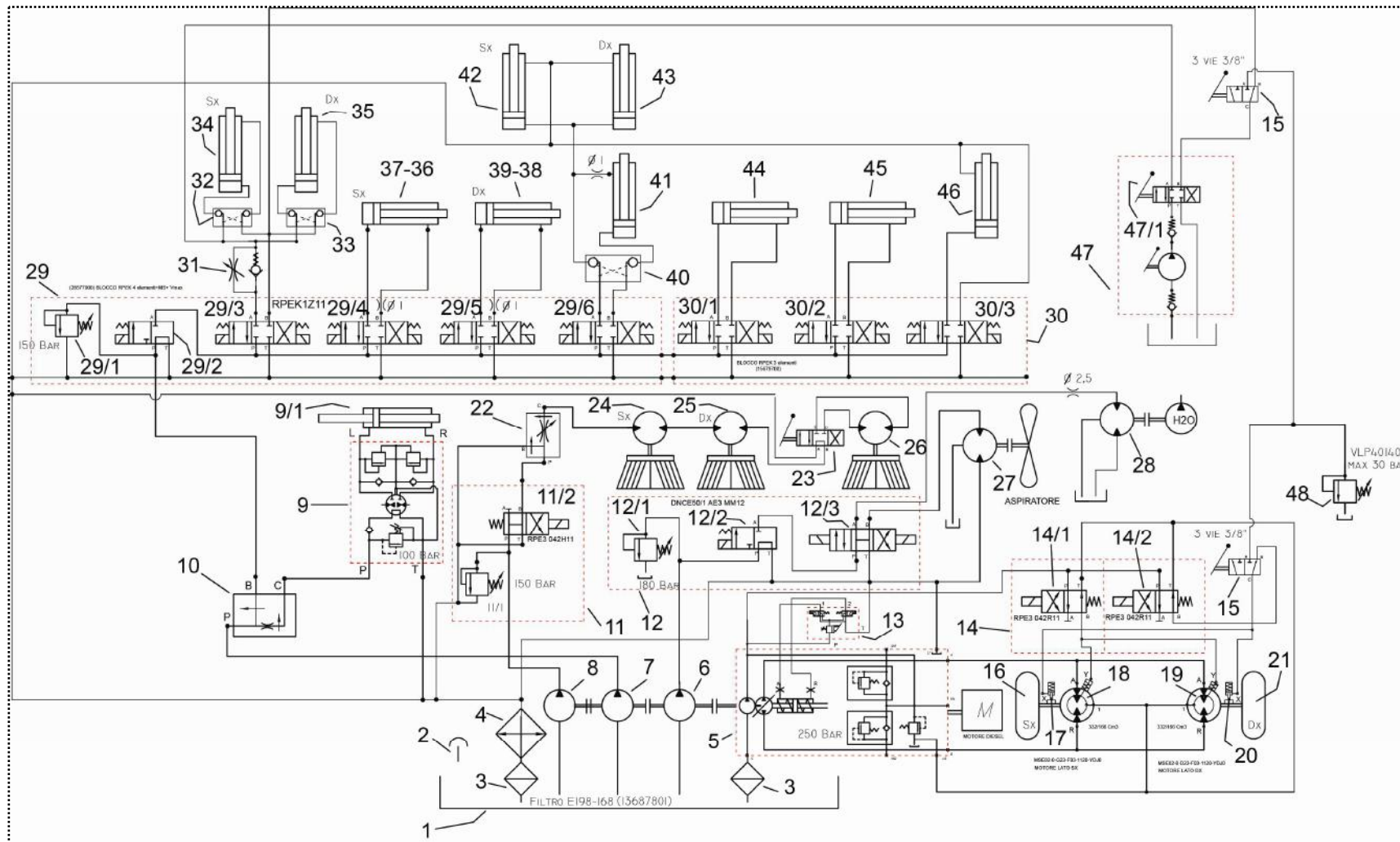
Tav. 12.00_ System air conditioning in the cabin



Tav. 12.00_ System air conditioning in the cabin

N.Pos	Description	Quantity
1	MI5269 - condenser	1
2	RC5144 - junction FD 5/8"	1
3	TU5251 - hose 13/32"	1
4	MO5139 - compressor	1
5	RC5146 - Straight fitting with socket	1
6	RC5146 - Straight fitting with socket	1
7	FT5075 - filter	1
8	PP5072 - pulley Kubota	1
9	CI5050 - belt (ECOTEC)	1
10	TU5252 - hose 1/2"	1
11	TU5253 - Hose 5/16"	1
12	RC5145 - junction FD	1
13	RC5145 - junction FD	1
14	KIT5608 - cabin unit	1
15	RC5147 - Junction F90°	1
16	PY5336 - Pressostato	1
17	RC5147 - Junction F90°	1
18	TU5253 - hose 5/16"	1
19	RC5148 - junction F 90° 3/4"	1

Tav. 13.00_ Hydraulic system



Tav. 13.00_ Hydraulic system

N.Pos	Description	Quantity
1	SB5057 – Oil tank	
2	TA5049 – cover tank	
3	FT5071 – oil filter	
4	PW5028 - condensator	
5	PO5036 – traction pump	
6	PO5037 – gear pump	
7	PO5037 – gear pump (steering - services)	
8	PO5037 – gear pump (rotating brush)	
9	AI5011 - hydroguide	
9/1	MA5033 - cylinder	
10	VO5024 - valve (steering – services)	
11	Blocco comando rotazione spazzole	
11/1	VO5025 - valve	
11/2	VO5026 – solenoide valve	
12	Blocco comando rotazione aspiratore – pompa acqua lavaggio	
12/1	VO5025 – valve max pression	
12/2	VO5027 – solenoide valve	
12/3	VO5028 – solenoide valve vacuum motor	
13	LV5142 - pedal	
14	Blocco comando freno di stazionamento	
14/1	VO5029 – solenoide valve	
14/2	VO5029 – solenoide valve	
15	VO5030 - manual switch three-way	
16	RT5047 – rear wheel LH	
17	VO5031 - Negative brake device left wheel	
18	MO5136 - Hydraulic motor drive left wheel	
19	MO5136 - Hydraulic motor drive right wheel	
20	VO5031 - Negative right wheel brake device	
21	RT5047 – rear wheel RH	
22	VO5032 - Flow regulator rotating brush	
23	VO5033 - Manual diverter four-way	
24	MO5137 - Motor rotation left brush	
25	MO5137 - Motor rotation right brush	
26	MO5137 - Motore rotation third brush (opzionale)	
27	MO5138 – gear motor rotation fan	
28	MO5140 – gear motor rotation water pump	
29	Lock solenoide valve	
29/1	VO5025 – valve of max. pression	
29/2	VO5027 – solenoide valve	
29/3	VO5034 – solenoide valve – lower box	
29/4	VO5034 – solenoide valve tilt LH brush	

Tav. 13.00_ Hydraulic system

N.Pos	Description	Quantity
29/5	VO5034 – Solenoid valve tilt brush DH	
29/6	VO5034 – solenoid lifting-lowering brush	
30	Locked solenoid valve group solenoid valve	
30/1	VO5034 – rotation third brush	
30/2	VO5034 – lifting-lowering third brush	
30/3	VO5034 – extension third brush	
31	VO5035 – regulator flow unidirectional	
32	VO5036 – valve to lock	
33	VO5036 – valve to lock	
34	MA5033 – cylinder to lift the hopper (LH part)	
35	MA5033 - cylinder to lift the hopper (RH part)	
36	VO5036 – valve to lock	
37	MA5041 - Tilt cylinder left brush	
38	VO5036 – valve to lock	
39	MA5041 – tilt cylinder right brush	
40	VO5036 – valve to lock	
41	MA5046 – cylinder lifting – lowering vacuum	
42	MA5037 – cylinder lifting-lowering LH brush	
43	MA5038 - cylinder lifting-lowering RH brush	
44	MA5043 – cylinder rotation third brush (optional)	
45	MA5042 – cylinder lifting-lowering third brush (optional)	
46	MA5044 – cylinder extension (optional)	
47	PO5033 – pump emergency	
47/1	Manual switch lifting - lowering hopper or unlocks parking brake	
48	VO5037 – valve max pressure	