

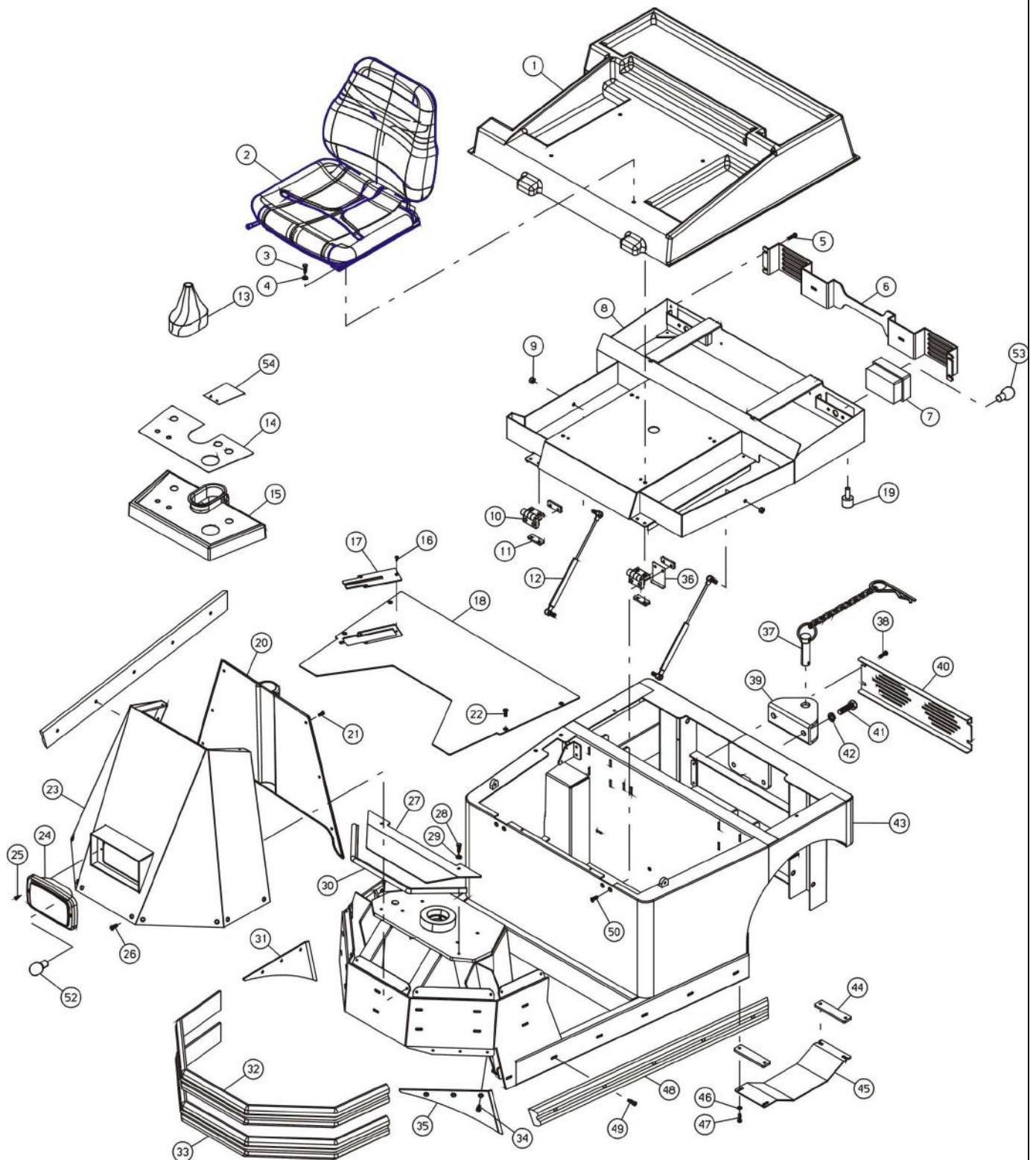
Manuale parti di ricambio
Spare parts
Pieces Detachees
Ersatzteile

TX-020



TX-020

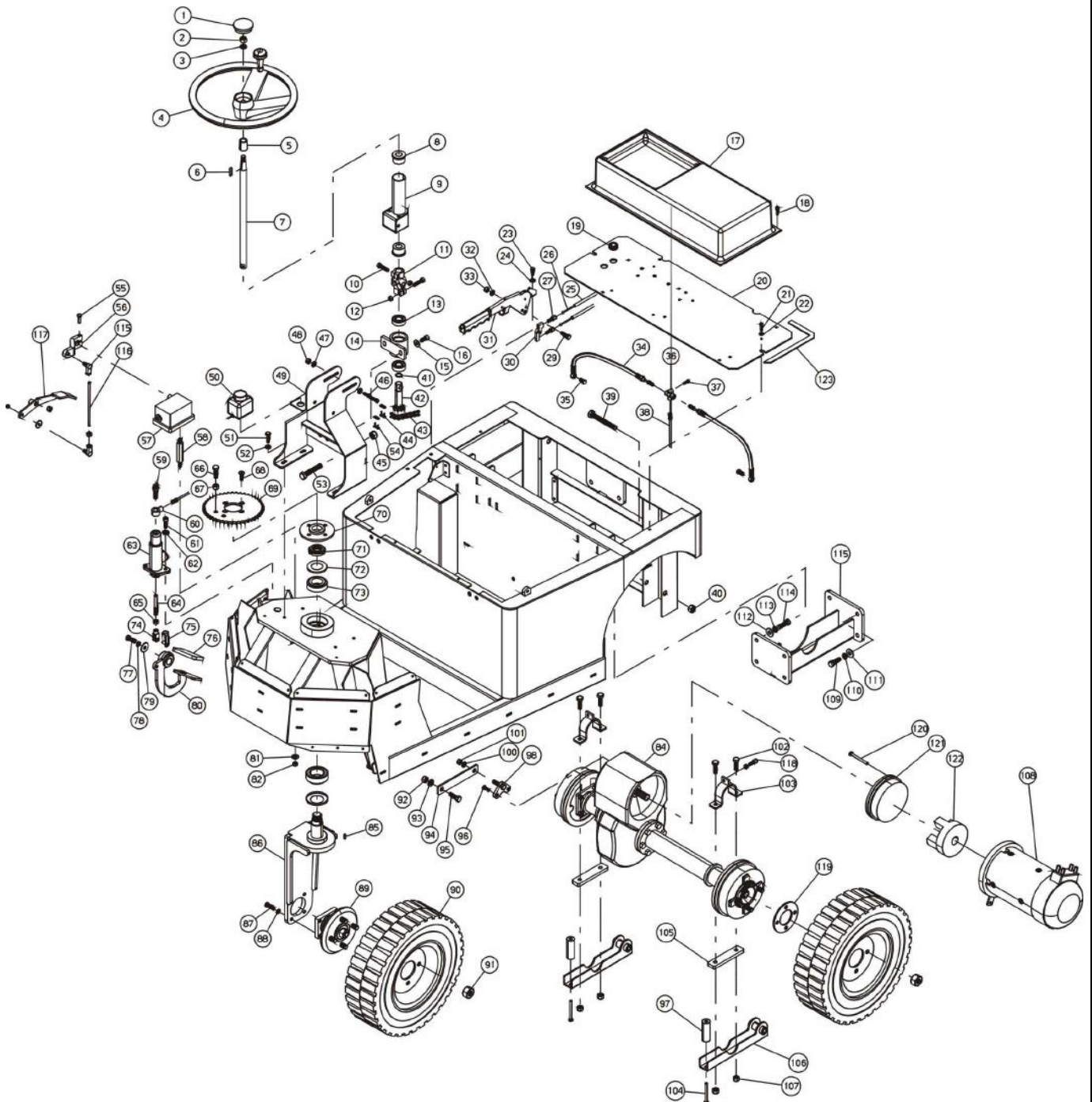
TAV. 1



| N.Position | Code Num | Qta | Descrizione | Description | Description | Bezeichnung |
|------------|-----------|-----|-------------------------------------|-------------------------|-------------------------|-----------------------|
| T20.01.001 | MT-PA2000 | 1 | PANNELLO SUPP.SEDILE POST.TX020 BIA | SUPPORT SEAT PANEL | SUPPORT SIEGE | SITZUNTERSTUETZUNGSPL |
| T20.01.002 | MT-MI2512 | 1 | SEDILE S/BRACCIOLI MOLLEGGIATO | SEAT | SIEGE | SITZ |
| T20.01.003 | | | BULLONERIA | BOLTS AND SCREW | BOULONS | SCHRAUBEN |
| T20.01.004 | | | BULLONERIA | BOLTS AND SCREW | BOULONS | SCHRAUBEN |
| T20.01.005 | | | BULLONERIA | BOLTS AND SCREW | BOULONS | SCHRAUBEN |
| T20.01.006 | MT-LM2500 | 1 | MANIGLIA SOLLEVAM. CASSONE POSTO GU | HANDLE | POIGNEE DE RELEVAGE | HANDGRIFF |
| T20.01.007 | MT-PY2501 | 2 | FANALE POSTERIORE TX025 | REAR LIGHT | PHARE ARRIERE | HECKLEUCHTE |
| T20.01.008 | MT-TP2001 | 1 | TELAIO CASSONE POSTERIORE (ZINC.) T | FRAME | CHASSIS CAISSON | RUECKKASTENRAHME |
| T20.01.009 | | | BULLONERIA | BOLTS AND SCREW | BOULONS | SCHRAUBEN |
| T20.01.010 | MT-MV2500 | 2 | CERNIERA CASSONE POST.PLASTICA ECOL | BODY HINGE | CHARNIERE CAISSON | RUECKKASTENSCHARNIER |
| T20.01.011 | MT-PT2503 | 4 | PIASTRINA SPESSORE X CERNIERE CASSO | PLAQUE | PLAQUETTE EPAISSEUR | PLAETTCHEN |
| T20.01.012 | MT-ML2500 | 2 | MOLLA A GAS C/SNODI M8 L=300 | SPRING | RESSORT A GAS ARTIC. | GAZFEDER |
| T20.01.013 | MT-MV2501 | 1 | SOFFIETTO ALBERO STERZO | BELLOWS | SOUFFLET ARBRE TIRANT | FALTENBALG DER LENKSP |
| T20.01.014 | MT-PA2504 | 1 | PLANCIA COMANDI (lexan sp.250 micro | DASH BOARD | TABEAU DE BORD | TAFEL |
| T20.01.015 | MT-PA2503 | 1 | PANNELLO COMANDI BIANCO RAL9010 Pla | COMMAND PANEL | PANNEAU DE CONTROLE | PLATTE |
| T20.01.016 | | | BULLONERIA | BOLTS AND SCREW | BOULONS | SCHRAUBEN |
| T20.01.017 | MT-LM2504 | 1 | COPERCHIO PEDALIERA TX025 AZZURRO | PEDAL COVER | COUVERCLE DES PEDALES | DECKELSPEDALE |
| T20.01.018 | MT-LM2505 | 1 | PEDANA POSTO GUIDA TX025 AZZURRO | DRIVER FOOTPEDAL | MARCHEPIED GUIDE | TRITTBRETT |
| T20.01.019 | MT-MI2509 | 4 | ANTIVIBRANTE 18x7,5 M6 (TAMPONE) | VIBRATION-DAMPING | ANTIVIBRATOIRE | ERSCHUTTERUNGSFREIER |
| T20.01.020 | MT-PA2001 | 1 | PANNELLO POSTERIORE MUSETTO TX020 B | REAR PANEL | PANNEAU ARR. | RUECKPLATTE DER NASE |
| T20.01.021 | | | BULLONERIA | BOLTS AND SCREW | BOULONS | SCHRAUBEN |
| T20.01.022 | | | BULLONERIA | BOLTS AND SCREW | BOULONS | SCHRAUBEN |
| T20.01.023 | MT-LM2000 | 1 | MUSETTO ANTERIORE TRATTORINO BIANCO | DASH BOARD SUPPORT | SUPPORT PANNEAU DE BO | VORDERNASE |
| T20.01.024 | MT-PY5195 | 1 | FANALE ANABBAGLIANTE ANT. PER TX020 | LIGHT | PHARE | ABBLENDLICHT |
| T20.01.025 | | | BULLONERIA | BOLTS AND SCREW | BOULONS | SCHRAUBEN |
| T20.01.026 | | | BULLONERIA | BOLTS AND SCREW | BOULONS | SCHRAUBEN |
| T20.01.027 | MT-LM2001 | 1 | CARTER ANTERIORE TRATTORINO AZZURRO | FRONT COVER | ENVELOPPE ANT. | VORDERGEHAUSE |
| T20.01.028 | | | BULLONERIA | BOLTS AND SCREW | BOULONS | SCHRAUBEN |
| T20.01.029 | | | BULLONERIA | BOLTS AND SCREW | BOULONS | SCHRAUBEN |
| T20.01.030 | MT-GR5022 | 1 | GUARNIZIONE COPRIBORDO L=400 | JOINT | JOINT | DICHTUNG |
| T20.01.031 | MT-LM2002 | 1 | BANDELLA LAT. DX TRATTORINO AZZURRO | RH SIDE SHEET | BANDE LAT. | RECHTSSEITENBANDSTAHL |
| T20.01.032 | MT-BU2502 | 1 | BUMPER ANTERIORE SUPERIORE | FRONT BUMPER | BUMPER AVANT SUP. | OBNENSTOSSFAENGER |
| T20.01.033 | MT-BU2503 | 1 | BUMPER ANTERIORE INFERIORE | FRONT BUMPER | BUMPER AVANT INF. | UNTENSTOSSFAENGER |
| T20.01.034 | | | BULLONERIA | BOLTS AND SCREW | BOULONS | SCHRAUBEN |
| T20.01.035 | MT-LM2003 | 1 | BANDELLA LAT.SX TRATTORINO AZZURRO | LH SIDE SHEET | BANDE LAT. GAUCHE | LINKSSEITENBANDSTAHL |
| T20.01.036 | MT-PT2504 | 1 | PIASTRINA RACCOGLI CAVI TELAIO | PLAQUE | PLAQUETTE | PLAETTCHEN |
| T20.01.037 | MT-SP2500 | 1 | SPINA GANCIO POSTERIORE (ZINC.) | HOOK PLUG | PRISE DU CROCHER | RUECKHAKENSTIFT |
| T20.01.038 | | | BULLONERIA | BOLTS AND SCREW | BOULONS | SCHRAUBEN |
| T20.01.039 | MT-CC2500 | 1 | GANCIO TRAINO (ZINCATO) | DRIVE HOOK | CROCHET DE TRACTION | STIFT |
| T20.01.040 | MT-LM2503 | 1 | GRIGLIA POSTERIORE TX025 AZZURRO | REAR GRID | GRILLE ARR. | RUECKGITTER |
| T20.01.041 | | | BULLONERIA | BOLTS AND SCREW | BOULONS | SCHRAUBEN |
| T20.01.042 | | | BULLONERIA | BOLTS AND SCREW | BOULONS | SCHRAUBEN |
| T20.01.043 | MT-TP2000 | 1 | TELAIO TX020 | FRAME | CHASSIS | RAHME |
| T20.01.044 | MT-DT2000 | 2 | DISTANZIALE PER PROTEZIONE DIFFEREN | SPACER | ENTRETOISE | AUSGLEICHABSTANSTUECK |
| T20.01.045 | MT-LM2509 | 1 | LAMIERA DI PROTEZIONE DIFFERENZIALE | DIFFERENTIAL SHEET | TOLE PROTECTRICE | AUSGLEICHSCHUTZBLECH |
| T20.01.046 | | | BULLONERIA | BOLTS AND SCREW | BOULONS | SCHRAUBEN |
| T20.01.047 | | | BULLONERIA | BOLTS AND SCREW | BOULONS | SCHRAUBEN |
| T20.01.048 | MT-BU2501 | 2 | BUMPER LATERALE | SIDE BUMPER | BUMPER | SEITENSTOSSFAENGER |
| T20.01.049 | | | BULLONERIA | BOLTS AND SCREW | BOULONS | SCHRAUBEN |
| T20.01.050 | | | BULLONERIA | BOLTS AND SCREW | BOULONS | SCHRAUBEN |
| T20.01.051 | | | BULLONERIA | BOLTS AND SCREW | BOULONS | SCHRAUBEN |
| T20.01.052 | MT-LP5016 | 1 | LAMPADINA IMEL 24V 75/70W H4-P43T-T | BULB | LAMPE | BIRNE |
| T20.01.053 | MT-LP5014 | 4 | LAMPADA 24V 5W BA15S | BULB | LAMPE | LEUCHTE |
| T20.01.054 | MT-MV2502 | 1 | PROTEZIONE TRASPARENTE CONTAORE | HOUR COUNTER PROTECTION | COMPTE-HEURS PROTECTION | STUNDENZAHLERSCHUTZ |

TX-020

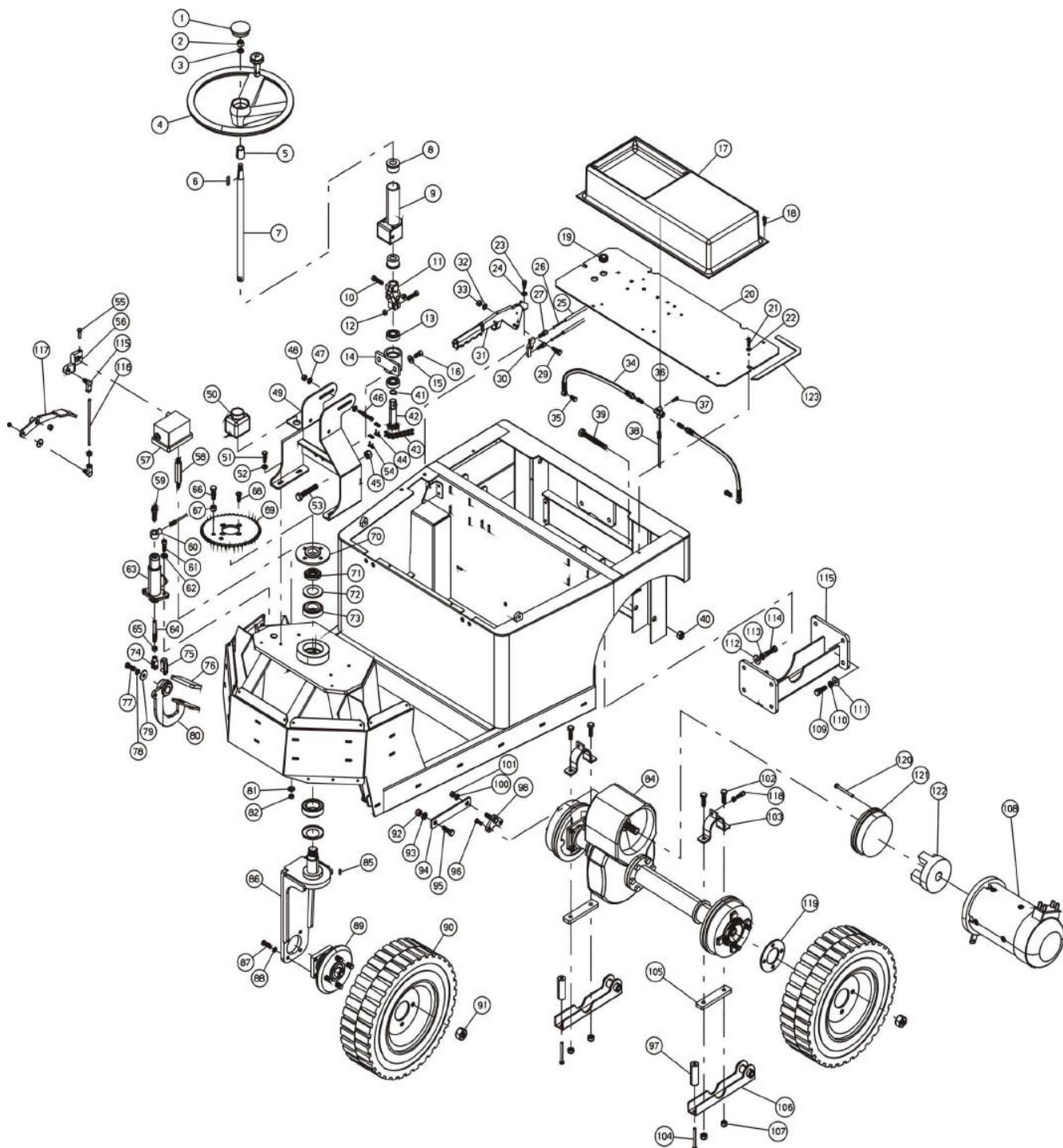
TAV. 2



| N.Position | Code Num | Qta | Descrizione | Description | Description | Bezeichnung |
|------------|-----------|-----|-------------------------------------|-----------------------|-----------------------|-----------------------|
| T20.02.001 | MT-MI072 | 1 | TAPPO PER VOLANTE SENZA CLAXON | FLYWHEEL PLUG | BOUCHON | VERSCHLUSS FUER DAS L |
| T20.02.002 | | | BULLONERIA | BOLTS AND SCREW | BOULONS | SCHRAUBEN |
| T20.03.003 | | | BULLONERIA | BOLTS AND SCREW | BOULONS | SCHRAUBEN |
| T20.02.004 | MT-MI127 | 1 | VOLANTE D.330 CON POMELLO | FLYWHEEL | VOLANT | LENKRAD |
| T20.02.005 | MT-BO117 | 1 | BOCCOLA RIDUZIONE PER VOLANTE | BUSH | DOUILLE | BUCHSE |
| T20.02.006 | MT-CH009 | 1 | CHIAVETTA 5X8X20 | KEY | CLAVETTE | KEIL (5x8x20) |
| T20.02.007 | MT-AL2500 | 1 | PIANTONE STERZO | STEERING COLUMN | TUBE DE DIRECTION | LENKSAEULE |
| T20.02.008 | MT-BO2502 | 2 | BOCCOLA IN TEFLON X ALBERO STERZO | BUSH | DOUILLE ARBRE DE BARR | LENKSPINDELSBUCHSE AU |
| T20.02.009 | MT-AL2501 | 1 | TUBO COPRI PIANTONE STERZO ZINCATO | STEERING COLUMN COVER | TUBE DIRECTION | ROHR |
| T20.02.010 | | | BULLONERIA | BOLTS AND SCREW | BOULONS | SCHRAUBEN |
| T20.02.011 | MT-GN010 | 1 | SNODO STERZO | STEERING JOINT | JOINT | LENKSGELENK |
| T20.02.012 | | | BULLONERIA | BOLTS AND SCREW | BOULONS | SCHRAUBEN |
| T20.02.013 | MT-CS2500 | 2 | CUSCINETTO A SFERE CTK 60042RS | BALL BEARING | ROULEMENT A BILLES | KUGELLAGER |
| T20.02.014 | MT-SU065 | 1 | SUPPORTO CUSCINETTI STERZO | BEARING SUPPORT | SUPPORT | LAGERSTUETZE |
| T20.02.015 | | | BULLONERIA | BOLTS AND SCREW | BOULONS | SCHRAUBEN |
| T20.02.016 | | | BULLONERIA | BOLTS AND SCREW | BOULONS | SCHRAUBEN |
| T20.02.017 | MT-PA2501 | 1 | COPERCHIO CARICABATTERIE (Plastica) | CHARGER COVER | COUVERCLE CHARGEUR | DECKEL DES BATTERIELA |
| T20.02.018 | | | BULLONERIA | BOLTS AND SCREW | BOULONS | SCHRAUBEN |
| T20.02.019 | MT-PY029 | 2 | PASSACAVO TELAIO GRANDE | FRAME FAIRLEAD | PASSE-CABLE | KABELDURCHGANG |
| T20.02.020 | MT-LM2506 | 1 | LAMIERA DI CHIUSURA POSTERIORE | SHEET | TOLE ARRIERE | BLECH |
| T20.02.021 | | | BULLONERIA | BOLTS AND SCREW | BOULONS | SCHRAUBEN |
| T20.02.022 | | | BULLONERIA | BOLTS AND SCREW | BOULONS | SCHRAUBEN |
| T20.02.023 | | | BULLONERIA | BOLTS AND SCREW | BOULONS | SCHRAUBEN |
| T20.02.024 | | | BULLONERIA | BOLTS AND SCREW | BOULONS | SCHRAUBEN |
| T20.02.025 | MT-RD2002 | 2 | GUAINA FRENO | BRAKE SHEATH | GAINÉ FREIN | BREMSEKABELMANTEL |
| T20.02.026 | MT-RD2003 | 2 | CAVO FRENO | BRAKE WIRE | CABLE FREIN | BREMSEKABEL |
| T20.02.027 | MT-MI5004 | 2 | REGOLATORE FILO FRENO M8 | BRAKET WIRE REGULATOR | REG.FIL FREIN | REGLER |
| T20.02.028 | | | BULLONERIA | BOLTS AND SCREW | BOULONS | SCHRAUBEN |
| T20.02.029 | | | BULLONERIA | BOLTS AND SCREW | BOULONS | SCHRAUBEN |
| T20.02.030 | MT-MI2000 | 1 | FERMA CAVO SPEC.X CAVO FRENO A MANO | CABLE STOP | FERME CABLE | KABELSPERRE |
| T20.02.031 | MT-LV2500 | 1 | LEVA FRENO A MANO TX025 | PARKING BRAKE LEVER | LEVIER FREIN PARCK. | HANDBREMSEHEBEL |
| T20.02.032 | | | BULLONERIA | BOLTS AND SCREW | BOULONS | SCHRAUBEN |
| T20.02.033 | | | BULLONERIA | BOLTS AND SCREW | BOULONS | SCHRAUBEN |
| T20.02.034 | MT-TU2501 | 2 | TFLEX POST.LG400 OCCHIO D10 CANALIN | FLEXIBLE HOSE | TUYAU FLEX | ROHR L=400 |
| T20.02.035 | MT-RC2504 | 2 | RACCORDO x FRENO POSTERIORE TX025 | UNION | RACCORD | VERBINDUNG FUER DIE R |
| T20.02.036 | MT-RC2502 | 1 | RACCORDO 3 VIE TX025 | UNION | RACCORD | VERBINDUNG |
| T20.02.037 | | | BULLONERIA | BOLTS AND SCREW | BOULONS | SCHRAUBEN |
| T20.02.038 | MT-TB2500 | 1 | TUBO IN RAME D5x1 L=2,9 IMP. FRENI | COPPER TUBE | TUBE | ROHR AUS KOPFER |
| T20.02.039 | | | BULLONERIA | BOLTS AND SCREW | BOULONS | SCHRAUBEN |
| T20.02.040 | | | BULLONERIA | BOLTS AND SCREW | BOULONS | SCHRAUBEN |
| T20.02.041 | | | BULLONERIA | BOLTS AND SCREW | BOULONS | SCHRAUBEN |
| T20.02.042 | MT-PE2501 | 1 | PERNO CON PIGNONE STERZO (ZINC.) | PIN | PIVOT | RADZAPFEN MIT RITZEL |
| T20.02.043 | MT-CT2500 | 1 | SPEZZONE CATENA STERZO | STEERING CHAIN | CHAINE DIRECTION | LENKRADKETTE |
| T20.02.044 | MT-CT2502 | 1 | MEZZA MAGLIA ASA 40 PER CATENA STER | HALF MESH | DEMI-MAILLE | LENRADKETTENHALBGLIED |
| T20.02.045 | | | BULLONERIA | BOLTS AND SCREW | BOULONS | SCHRAUBEN |
| T20.02.046 | | | BULLONERIA | BOLTS AND SCREW | BOULONS | SCHRAUBEN |
| T20.02.047 | | | BULLONERIA | BOLTS AND SCREW | BOULONS | SCHRAUBEN |
| T20.02.048 | | | BULLONERIA | BOLTS AND SCREW | BOULONS | SCHRAUBEN |
| T20.02.049 | MT-SU2504 | 1 | SUPPORTO PIANTONE STERZO (ZINC.) | STEERING COLUMN SUPPO | SUPPORT DIRECTION | LENKSAEULESTUETZE |
| T20.02.050 | MT-SB5006 | 1 | VASCHETTA OLIO FRENI C/TAPPO | BRAKE OIL TANK | BAC HUILE FREINS | WANNE FUER DAS BREMSE |
| T20.02.051 | | | BULLONERIA | BOLTS AND SCREW | BOULONS | SCHRAUBEN |
| T20.02.052 | | | BULLONERIA | BOLTS AND SCREW | BOULONS | SCHRAUBEN |
| T20.02.053 | | | BULLONERIA | BOLTS AND SCREW | BOULONS | SCHRAUBEN |
| T20.02.054 | MT-CT2501 | 1 | GIUNTO ASA 40 PER CATENA STERZO | JOINT | JOINT | KUPPLUNG |
| T20.02.055 | | | BULLONERIA | BOLTS AND SCREW | BOULONS | SCHRAUBEN |
| T20.02.056 | MT-LV2506 | 1 | LEVA PEDALIERA | PEDALS LEVER | LEVIER PEDAL | PEDALHEBEL |
| T20.02.057 | MT-PY2589 | 1 | PEDALIERA AVANZAMENTO (nuovo mod.) | PEDAL KEYBOARD | PEDAL D'AVANCEMENT | PEDALE |

TX-020

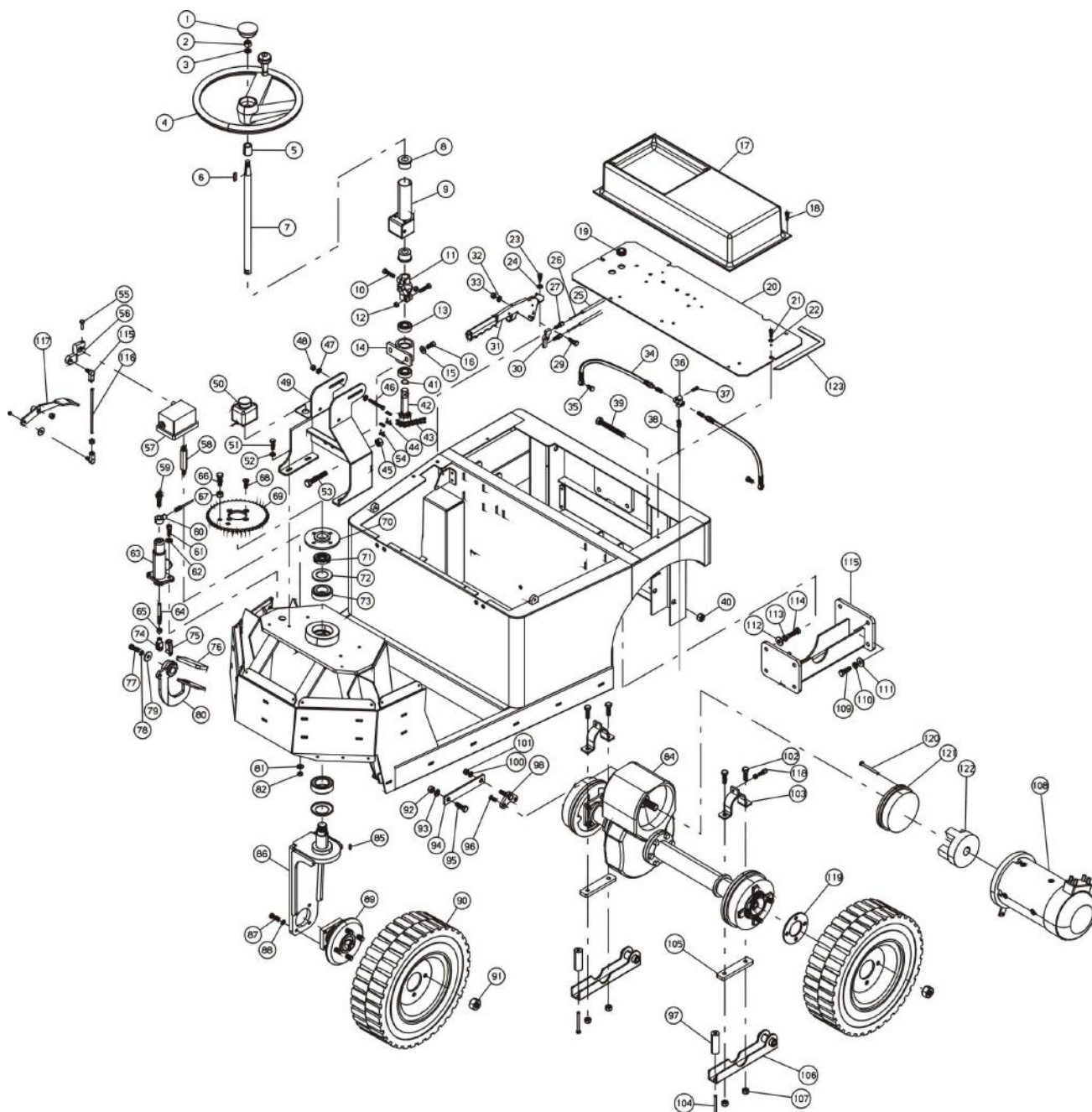
TAV. 2



| N.Position | Code Num | Qta | Descrizione | Description | Description | Bezeichnung |
|------------|-----------|-----|--------------------------------------|------------------------|-----------------------|-----------------------|
| T20.02.058 | | | BULLONERIA | BOLTS AND SCREW | BOULONS | SCHRAUBEN |
| T20.02.059 | | | BULLONERIA | BOLTS AND SCREW | BOULONS | SCHRAUBEN |
| T20.02.060 | MT-RC2000 | 1 | RACCORDO A 1 VIA IMPIANTO FRENI TX0 | UNION | RACCORD | VERBINDUNG |
| T20.02.061 | | | BULLONERIA | BOLTS AND SCREW | BOULONS | SCHRAUBEN |
| T20.02.062 | | | BULLONERIA | BOLTS AND SCREW | BOULONS | SCHRAUBEN |
| T20.02.063 | MT-PO5001 | 1 | POMPA FRENI S48D | BRAKE PUMP | POMPE DES FREINS | BREMSEPUMPE |
| T20.02.064 | MT-PE2001 | 1 | PUNTALE X POMPA FRENI PO5008 TX020/ | BRAKE PUMP ROD | BUTEE POMPE FREINS | SPITZE FUER DIE BREMS |
| T20.02.065 | | | BULLONERIA | BOLTS AND SCREW | BOULONS | SCHRAUBEN |
| T20.02.066 | | | BULLONERIA | BOLTS AND SCREW | BOULONS | SCHRAUBEN |
| T20.02.067 | | | BULLONERIA | BOLTS AND SCREW | BOULONS | SCHRAUBEN |
| T20.02.068 | | | BULLONERIA | BOLTS AND SCREW | BOULONS | SCHRAUBEN |
| T20.02.069 | MT-XD2500 | 1 | CORONA STERZO 45 DENTI | STEERING RIM | COURONNE DIRECTION | LENKRADKRANZE |
| T20.02.070 | MT-FL021 | 1 | FLANGIA CORONA STERZO | RIM FLANGE | FLASQUE | FLANSCH |
| T20.02.071 | MT-DD267 | 1 | GHIERA AUTOBLOCCANTE M25x1.5 | SELF-LOCKING RING NUT | EMBOUT | GITTER |
| T20.02.072 | MT-GI5001 | 1 | PARAPOLVERE IN LAMIERA D=60-d=35 x | ANTIDUST | ANTI-POUSSIERE | STAUBKAPPE |
| T20.02.073 | MT-CS048 | 2 | CUSCINETTO CONICO 32007 X/Q | BEARING | ROULEMENT | ROLLENLAGER |
| T20.02.074 | MT-FR2501 | 1 | FORCELLA M8 LUNGA | FORK | FOURCHE | GABEL |
| T20.02.075 | MT-MI157 | 1 | CLIPS PER FORCELLA M8 | CLIPS | CLIPS | GABELKLIPP |
| T20.02.076 | MT-MP2500 | 1 | COPRIPEDALE FRENO | BRAKE PEDAL COVER | COUVERTURE PEDAL | BREMSEHEBELDECKEL |
| T20.02.077 | | | BULLONERIA | BOLTS AND SCREW | BOULONS | SCHRAUBEN |
| T20.02.078 | | | BULLONERIA | BOLTS AND SCREW | BOULONS | SCHRAUBEN |
| T20.02.079 | | | BULLONERIA | BOLTS AND SCREW | BOULONS | SCHRAUBEN |
| T20.02.080 | MT-LV2503 | 1 | PEDALE FRENO SERVIZIO (ZINCATO) | BRAKE FOOT PEDAL | PEDAL FREIN | HANDBREMSEHEBEL |
| T20.02.081 | | | BULLONERIA | BOLTS AND SCREW | BOULONS | SCHRAUBEN |
| T20.02.082 | | | BULLONERIA | BOLTS AND SCREW | BOULONS | SCHRAUBEN |
| T20.02.083 | MT-CT2501 | 1 | GIUNTO ASA 40 PER CATENA STERZO | JOINT | JOINT | KUPPLUNG |
| T20.02.084 | MT-RD2502 | 1 | RIDUTTORE DIFFERENZIALE | DIFFERENTIAL REDUCTOR | REDUCTEUR DIFF. | AUSGLEICHUNTERSETZUNG |
| T20.02.085 | | | BULLONERIA | BOLTS AND SCREW | BOULONS | SCHRAUBEN |
| T20.02.086 | MT-SU2000 | 1 | SUPPORTO RUOTA STERZO (ZINC.) TX020 | STEERING WHEEL SUPP. | SUPPORT ROUE DIRECT. | STUETZE |
| T20.02.087 | | | BULLONERIA | BOLTS AND SCREW | BOULONS | SCHRAUBEN |
| T20.02.088 | | | BULLONERIA | BOLTS AND SCREW | BOULONS | SCHRAUBEN |
| T20.02.089 | MT-RP2000 | 1 | MOZZO RUOTA ANTERIORE TX020 | FRONT WHEEL HUB | MOYEAU ROUE | VORDERRADSNABE |
| T20.02.090 | MT-RP2502 | 3 | RUOTA COMPLETA TX025/TX020 | WHEEL | ROUE | RAD |
| T20.02.091 | MT-DD2500 | 12 | DADO M12x1,5 A CUL D'UOVO x RUOTA A | NUT | ECROU | SCHRAUBENMUTTER |
| T20.02.092 | | | BULLONERIA | BOLTS AND SCREW | BOULONS | SCHRAUBEN |
| T20.02.093 | | | BULLONERIA | BOLTS AND SCREW | BOULONS | SCHRAUBEN |
| T20.02.094 | MT-PT2001 | 1 | PIATTO ANCORAGGIO MOTORE | MOTOR PLATE | PLATEAU MOTEUR | MOTORANKERPLATTE |
| T20.02.095 | | | BULLONERIA | BOLTS AND SCREW | BOULONS | SCHRAUBEN |
| T20.02.096 | | | BULLONERIA | BOLTS AND SCREW | BOULONS | SCHRAUBEN |
| T20.02.097 | MT-DT2002 | 2 | DISTANZIALE 11x30x85 | SPACER | ENTRETOISE | AUSGLEICHABSTANSTUECK |
| T20.02.098 | | | BULLONERIA | BOLTS AND SCREW | BOULONS | SCHRAUBEN |
| T20.02.099 | MT-DT2001 | 1 | DISTANZIALE De=20 Di=10.5 l=20 | SPACER | ENTRETOISE | ABSTANDSTUECK |
| T20.02.100 | | | BULLONERIA | BOLTS AND SCREW | BOULONS | SCHRAUBEN |
| T20.02.101 | | | BULLONERIA | BOLTS AND SCREW | BOULONS | SCHRAUBEN |
| T20.02.102 | | | BULLONERIA | BOLTS AND SCREW | BOULONS | SCHRAUBEN |
| T20.02.103 | MT-SU2002 | 2 | CAVALLOTTO FISSAGGIO DIFFERENZIALE | U BOLT | PONT | BUEGELBOLZEN |
| T20.02.104 | | | BULLONERIA | BOLTS AND SCREW | BOULONS | SCHRAUBEN |
| T20.02.105 | MT-PT2000 | 2 | PIATTO DI RINFORZO FISS. DIFFERENZI | DIFFERENTIAL PLATE | REINFORCE DIFFERENTIE | AUSGLEICHANKERSPLATTE |
| T20.02.106 | MT-SU2001 | 2 | SUPPORTO ASSALE POSTERIORE TX020 | REAR AXLE SUPPORT | SUPPORT AXE ARRIERE | STUETZE |
| T20.02.107 | | | BULLONERIA | BOLTS AND SCREW | BOULONS | SCHRAUBEN |
| T20.02.108 | MT-MO2001 | 1 | MOTORE TRAZIONE 2000W 24V TX020 | DRIVE MOTOR | MOTEUR TRACTION | ANTRIEBMOTOR |
| T20.02.109 | | | BULLONERIA | BOLTS AND SCREW | BOULONS | SCHRAUBEN |
| T20.02.110 | | | BULLONERIA | BOLTS AND SCREW | BOULONS | SCHRAUBEN |
| T20.02.111 | | | BULLONERIA | BOLTS AND SCREW | BOULONS | SCHRAUBEN |
| T20.02.112 | | | BULLONERIA | BOLTS AND SCREW | BOULONS | SCHRAUBEN |
| T20.02.113 | | | BULLONERIA | BOLTS AND SCREW | BOULONS | SCHRAUBEN |
| T20.02.114 | | | BULLONERIA | BOLTS AND SCREW | BOULONS | SCHRAUBEN |
| T20.02.115 | MT-MI041 | 2 | SNODO SFERICO DESTROSO RB8 | JOINT | ROTULE | GELENK |
| T20.02.116 | MT-TI2503 | 1 | TIRANTE COMANDO AVANZAMENTO M8 L=220 | TIE ROD | ETRIER | SPANNSTANGE |
| T20.02.117 | MT-LV2505 | 1 | PEDALE ACCELERATORE | GAS PEDAL | PEDAL ACCELERATEUR | GAZPEDAL |
| T20.02.118 | MT-MI5004 | 2 | REGOLATORE FILO FRENO M8 | BRACKET WIRE REGULATOR | REG.FIL FREIN | REGLER |
| T20.02.119 | MT-FL2503 | 2 | FLANGIA MOZZO RUOTE POST. (ZINCATA) | FLANGE | BRIDE | FLANSCH |

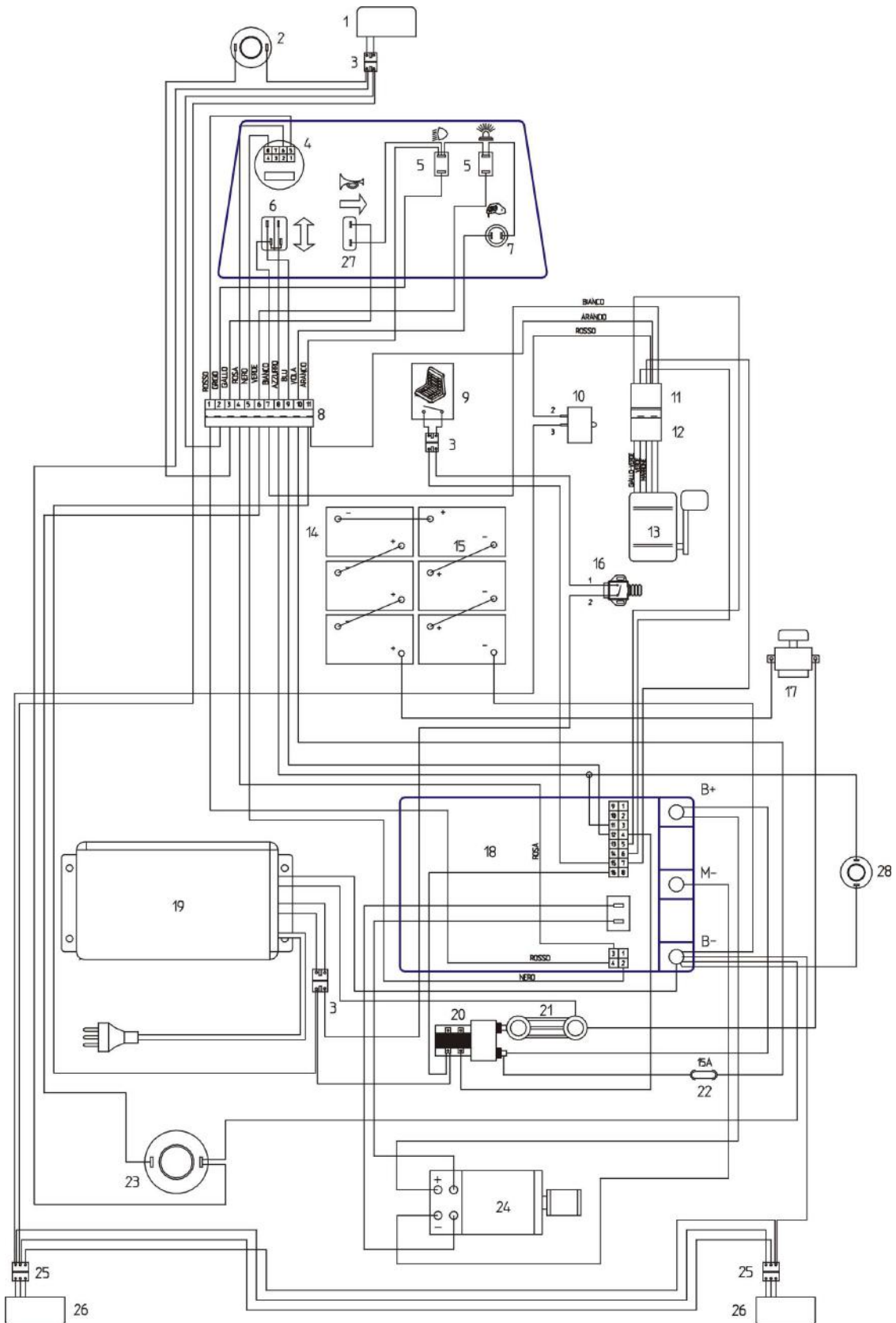
TX-020

TAV. 2



TX-020

TAV. 3



| N.Position | Code Num | Qta | Descrizione | Description | Description | Bezeichnung |
|------------|-----------|-----|-------------------------------------|-----------------------|-----------------------|-----------------------|
| T20.03.001 | MT-PY5195 | 1 | FANALE ANABBAGLIANTE ANT. PER TX020 | LIGHT | PHARE | ABBLENDLICHT |
| T20.03.002 | MT-PY5307 | 1 | AVVISATORE ACUSTICO A DISCO 24V 1A | HORN | CLACSON | HUPE |
| T20.03.004 | MT-PY2519 | 1 | CONTAORE CURTIS 840R015SNA101N | HOURL COUNTER | COMPTEUR HORAIRE CURT | STUNDENZAEBLER |
| T20.03.005 | MT-IN022 | 2 | INTERRUTTORE A SCATTO T115A-A | SNAP SWITCH | INTERRUPTEUR A RESSOR | FEDERSCHALTER |
| T20.03.006 | MT-PY2502 | 1 | DEVIATORE FRECCHE 15.10 (0007.0002) | INDICATOR SWITCH | SELECTEUR INDIC.DIREC | BLINKLICHTWECHSELSCHA |
| T20.03.007 | MT-PY5141 | 1 | INTERRUTTORE A CHIAVE INTERCAMBIABI | KEY SWITCH | INTERRUPTEUR A CLEF | SCHLUESSELSCHALTER |
| T20.03.009 | MT-MI2500 | 1 | SEDILE CON GUIDE TX025 | SEAT | SIEGE | SITZ |
| T20.03.010 | MT-IN2500 | 1 | IDROSTOP TX025 | MICRO-SWITCH | MICRO-INTERRUPTEUR | MICROSCHALTER |
| T20.03.013 | MT-PY2589 | 1 | PEDALIERA AVANZAMENTO (nuovo mod.) | PEDAL KEYBOARD | PEDAL D'AVANCEMENT | PEDALE |
| T20.03.015 | MT-PY001 | 1 | CAVO COLLEGAM. BATTERIE S=10mmq L=3 | BATTERY CONNECT.CABLE | CABLE | BATTERIEKABEL |
| T20.03.016 | MT-IN5005 | 1 | MICRO - | MICRO | MICRO | MICROSCHALTER |
| T20.03.017 | MT-PY2002 | 1 | INTERRUTT.DI EMERGENZA 170A 12/24V | EMERGENCY SWITCH | ARRET D'URGENCE | NOTSCHALTER |
| T20.03.018 | MT-PY2517 | 1 | KIT REG.VEL.CURTIS 1243-4322 24/36V | SPEED ADJUSTMENT KIT | KIT REGLAGE VITESSE | PLATINE |
| T20.03.019 | MT-PY5191 | 1 | CARICABATTERIA 24V 30A | CHARGER 24V 30A | CHARGEUR 24V 30A | BATTERIELADEGERAET |
| T20.03.020 | MT-PY2001 | 1 | TELERUTTORE DI LINEA PER TX 24V C12 | REMOTE CONTROL SWITCH | TELERUPTEUR | FERNSCHALTER |
| T20.03.021 | MT-PY5023 | 1 | FUSIBILE LAMELLARE 200 A | FUSE | FUSIBLE | FLACHSICHERUNSEINSATZ |
| T20.03.022 | MT-PY5118 | 1 | FUSIBILE 15A | 15A FUSE | FUSIBLE | SICHERUNG |
| T20.03.023 | MT-PY7005 | 1 | LAMPEGGIANTE MULTIVOLTAGGIO | | | |
| T20.03.024 | MT-MO2001 | 1 | MOTORE TRAZIONE 2000W 24V TX020 | DRIVE MOTOR | MOTEUR TRACTION | ANTRIEBMOTOR |
| T20.03.026 | MT-PY2501 | 2 | FANALE POSTERIORE TX025 | REAR LIGHT | PHARE ARRIERE | HECKLEUCHTE |
| T20.03.027 | | | | | | |
| T20.03.028 | MT-PY5180 | 1 | CICALINO RETROMARCIA | | | |

Serial Number:

Numero di serie:

Date of shipment:

Data di spedizione:

ING. O. FIORENTINI S.p.A.
“THE BEST IN FLOOR MACHINES”

FILIALI:

20132 MILANO – Fax. 02/2592779

Via Palmanova 211/a – Tel. 02/27207783 - 2564810

00012 Guidonia Montecelio (ROMA) – Fax. (0774)353419 - 353314

Via B. Pontecorvo 20 – Tel. (0774)357184 - 353015

STABILIMENTO:

50030 PIANCALDOLI (FI) – Fax. 055/817144

Loc. Rombola – Tel. 055/8173610