

I20BNEW

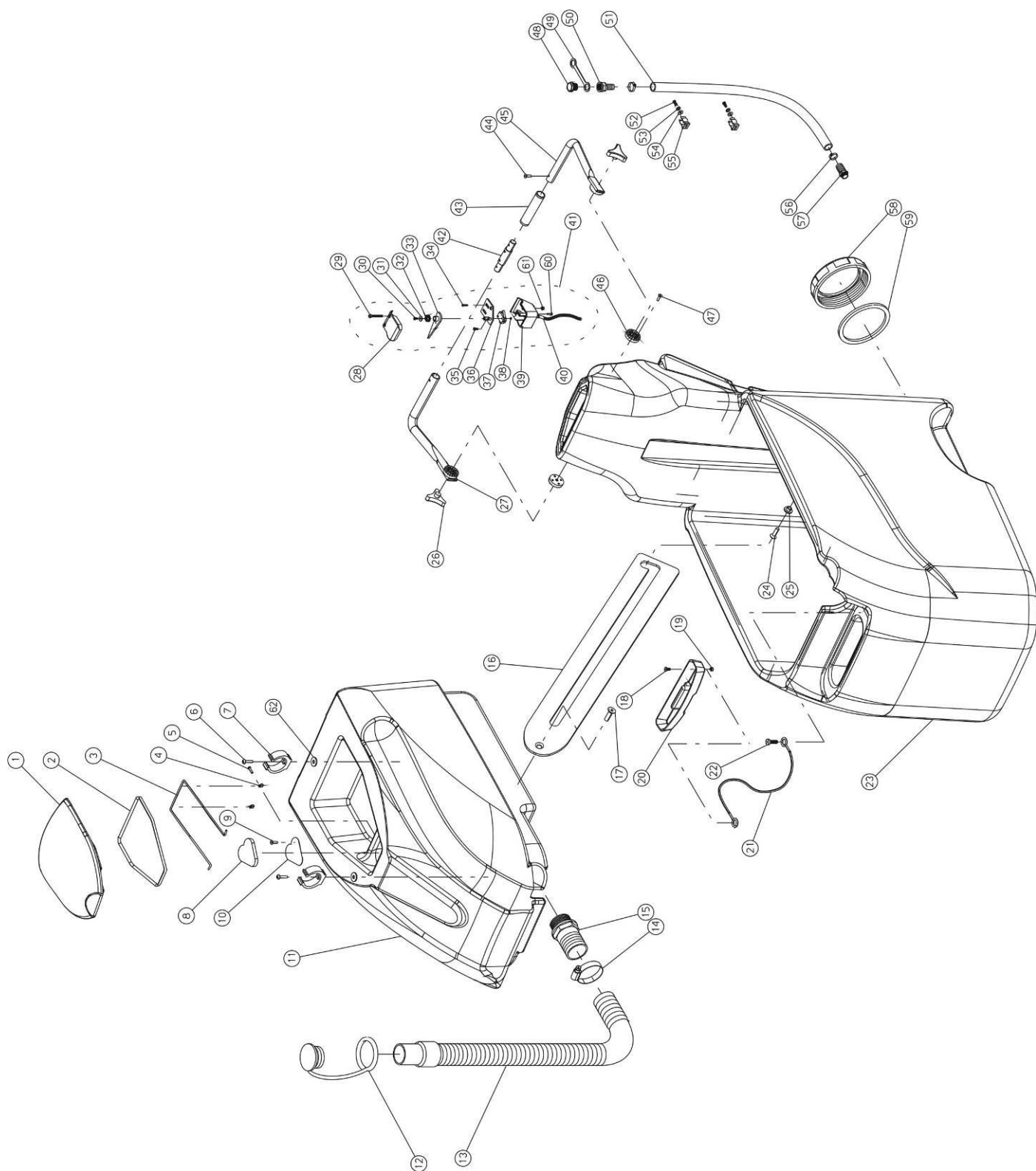
PARTI DI RICAMBIO
SPARE PARTS
PIECES DETACHEES
ERSATZTEILE



ING. O. FIORENTINI
INDUSTRIAL CLEANING MACHINE

I20BNEW

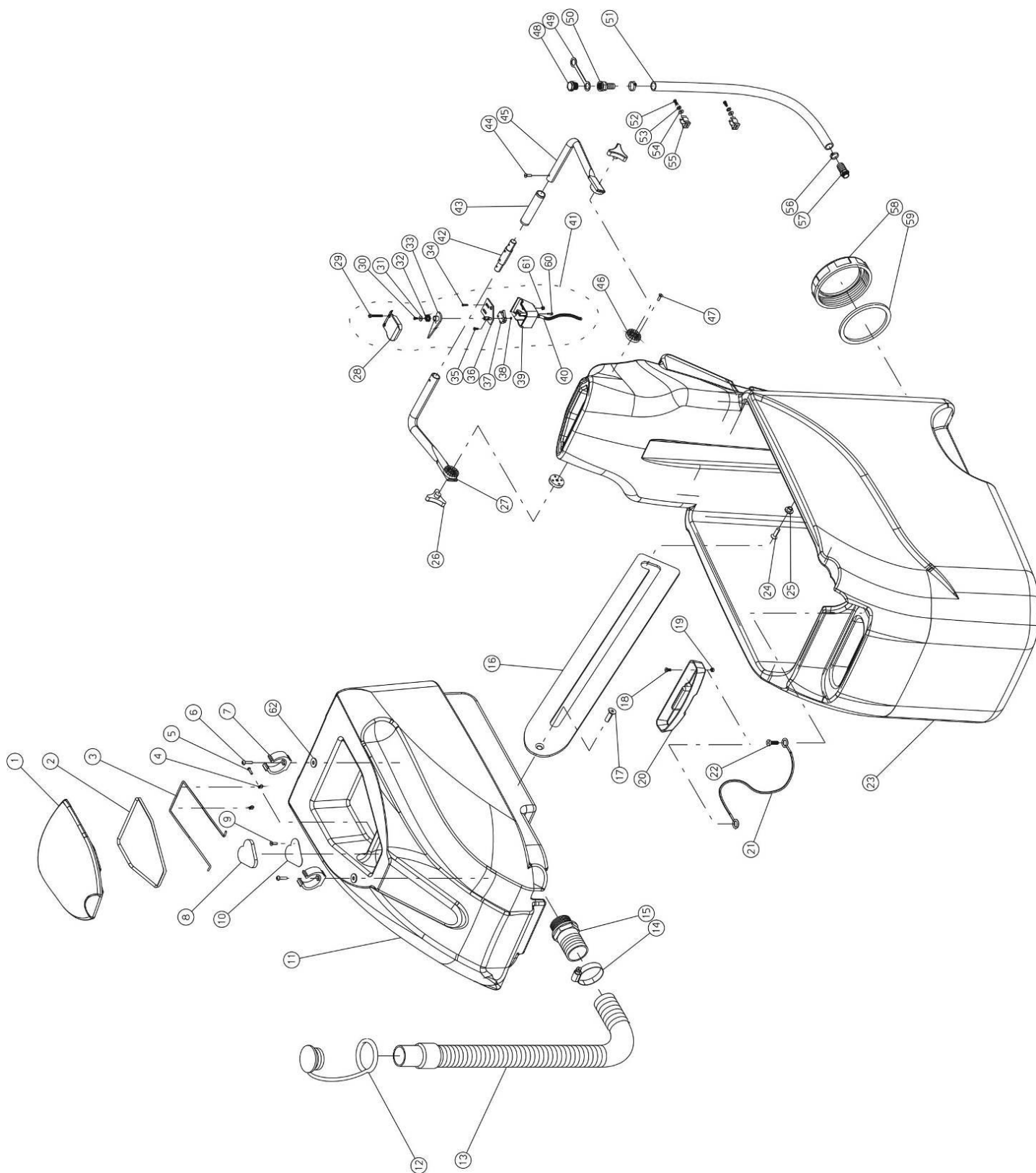
TAV. 1



| N.Position | Code Num | Qta | Descrizione | Description | Description | Bezeichnung |
|------------|----------|-----|--------------------------------------|-------------------------------|---------------------------------|-------------------------|
| 18N.01.001 | CO283 | 1 | COPERCHIO SERBATOIO RECUPERO GRIGIO | RECOVERY TANK COVER GREY | COUVERCLE RES. RECUPE GRIS | TANKDECKEL GRAY |
| 18N.01.001 | CO283A | 1 | COPERCHIO SERBATOIO RECUPERO ARANCIO | RECOVERY TANK COVER ORANGE | COUVERCLE RES. RECUPE ORANGE | TANKDECKEL ORANGE |
| 18N.01.001 | CO283B | 1 | COPERCHIO SERBATOIO RECUPERO BLU | RECOVERY TANK COVER BLUE | COUVERCLE RES. RECUPE BLEU | TANKDECKEL BLUE |
| 18N.01.001 | CO283GI | 1 | COPERCHIO SERBATOIO RECUPERO GIALLO | RECOVERY TANK COVER YELLOW | COUVERCLE RES. RECUPE JAUNE | TANKDECKEL GELB |
| 18N.01.001 | CO283N | 1 | COPERCHIO SERBATOIO RECUPERO NERO | RECOVERY TANK COVER BLACK | COUVERCLE RES. RECUPE NOIR | TANKDECKEL SCHWARZ |
| 18N.01.001 | CO283R | 1 | COPERCHIO SERBATOIO RECUPERO ROSSO | RECOVERY TANK COVER RED | COUVERCLE RES. RECUPE ROUGE | TANKDECKEL ROT |
| 18N.01.001 | CO283V | 1 | COPERCHIO SERBATOIO RECUPERO VERDE | RECOVERY TANK COVER GREEN | COUVERCLE RES. RECUPE VERT | TANKDECKEL GRUN |
| 18N.01.002 | GR197 | 1 | GUARNIZ.TENUTA COPERCHIO SERB.REC. | GASKET FOR REC. TANK | GARNITURE POUR COUVER | DECKELDICHTUNG |
| 18N.01.003 | ML181 | 1 | MOLLA AD OMEGA D.5 INOX | SPRING | RESSORT D.5 | FEDER |
| 18N.01.004 | MI372 | 2 | SERRACAVO IN NYLON 6,4 MM. | TERMINAL SCREW | SERRE-CABLE EN NYLON | NYLON KABELSCHELLE |
| 18N.01.005 | VC210 | 2 | VITE CILIN.CROCE M5x8 UNI 7687 | SCREW | VIS | ZYLINDERSCHRAUBE |
| 18N.01.006 | VC213 | 2 | VITE CILIN.CROCE M5x16 UNI 7687 ZNT | SCREW | VIS | SCHRAUBE |
| 18N.01.007 | ML224 | 2 | MOLLA PER TUBO FLEX | SPRING | RESSORT | FEDER |
| 18N.01.008 | FT078 | 1 | FILTRO ASPIRAZIONE PPI45 SP25 | VACUUM FILTER | FILTRE ASPIRATION | SAUGFILTER |
| 18N.01.009 | VA410 | 2 | VITE AUTOFILET. TC 3.9x9.5 INOX DIN | SCREW | VIS | SCHRAUBE |
| 18N.01.010 | RE017 | 1 | RETINA FILTRO ASPIRAZIONE | VACUUM FILTER NET | RESEUA FILTRE ASPIRAT | FILTERGEWEBE |
| 18N.01.011 | SB231 | 1 | SERBATOIO RECUPERO VERSIONE 2 BLU - | RECOVERY TANK BLU | RESERVOIR RECUPER. BLU | BLAU SCHMUTZWASSERTAN |
| 18N.01.011 | SB231A | 1 | SERBATOIO RECUPERO ARANCIONE | RECOVERY TANK ORANGE | RESERVOIR RECUPER. ORANGE | ORANGE SCHMUTZWASSER |
| 18N.01.011 | SB231G | 1 | SERBATOIO RECUPERO GRIGIO | RECOVERY TANK GREY | RESERVOIR RECUPER. GRIS | GRAY SCHMUTZWASSER |
| 18N.01.011 | SB231GI | 1 | SERBATOIO RECUPERO GIALLO | RECOVERY TANK YELLOW | RESERVOIR RECUPER. JAUNE | GELB SCHMUTZWASSER |
| 18N.01.011 | SB231N | 1 | SERBATOIO RECUPERO NERO | RECOVERY TANK NERO | RESERVOIR RECUPER. NOIR | SCHWARZ SCHMUTZWASSER |
| 18N.01.011 | SB231R | 1 | SERBATOIO RECUPERO ROSSO | RECOVERY TANK RED | RESERVOIR RECUPER. ROUGE | ROT SCHMUTZWASSER |
| 18N.01.012 | TA002 | 1 | TAPPO TUBO SCARICO SERBATOIO RECUPE | PLUG | BOUCHON | DECKEL |
| 18N.01.013 | TB366 | 1 | TUBO SCARICO ACQUA SPORCA | DIRTY WATER DRAIN HOS | TUBE DE DECHARGE EAU | AUSLAUFROHR |
| 18N.01.014 | FS031 | 1 | FASCETTA 32-50/12 W4 INOX | CLAMP | BANDE | SCELLE |
| 18N.01.015 | RC025 | 1 | RACCORDD0 1"X 32 MASCHIO | CONNECTOR | RACCORD | ANSCHLUSS |
| 18N.01.016 | TP184 | 1 | FERMO APERTURA SERBATOIO RECUPERO | RECOVERY TANK LOCK | ARRET POUR OUVERTURE | SCHMUTZWASSERTANK SPE |
| 18N.01.017 | VS219 | 1 | VITE SVASATA A CROCE M5x16 UNI 7688 | SCREW | VIS M5x16 | SCHRAUBE |
| 18N.01.018 | VC210 | 1 | VITE CILIN.CROCE M5x8 UNI 7687 | SCREW | VIS | ZYLINDERSCHRAUBE |
| 18N.01.019 | DD252 | 1 | DADO AUTOBLOCCANTE M5 | NUT | ECROU DE SURETE | MUTTERSCHRAUBE |
| 18N.01.020 | CO276 | 1 | COPERCHIO SERBATOIO SOLUZIONE NERO | SOLUTION TANK COVER | COUVERCLE RESERV. SOL | FRISHWASSETANK DECKEL |
| 18N.01.021 | MV100 | 1 | CAVO DI FISSAGGIO L=320mm - | CABLE | CABLE | BEFESTIGUNGSKABEL |
| 18N.01.022 | VA251 | 1 | VITE AUTOF.TC 3.9x13 UNI 6954/71 ZN | SCREW | VIS TC 3.9X13 | BLECHSCHRAUBE |
| 18N.01.023 | SB230 | 1 | SERBATOIO SOLUZIONE GRIGIO P265 | SOLUTION TANK GREY | RESER. SOLUTION GRIS | GRAU FRISCHWASSETANK |
| 18N.01.023 | SB230A | 1 | SERBATOIO SOLUZIONE ARANCIONE | SOLUTION TANK ORANGE | RESER. SOLUTION ORANGE | ORANGE FRISCHWASSETANK |
| 18N.01.023 | SB230B | 1 | SERBATOIO SOLUZIONE BLU | SOLUTION TANK BLUE | RESER. SOLUTION BLEU | BLUE FRISCHWASSETANK |
| 18N.01.023 | SB230GI | 1 | SERBATOIO SOLUZIONE GIALLO | SOLUTION TANK YELLOW | RESER. SOLUTION JAUNE | GELB FRISCHWASSETANK |
| 18N.01.023 | SB230N | 1 | SERBATOIO SOLUZIONE NERO | SOLUTION TANK BLACK | RESER. SOLUTION NOIR | SCHWARZ FRISCHWASSETANK |
| 18N.01.023 | SB230R | 1 | SERBATOIO SOLUZIONE ROSSO | SOLUTION TANK RED | RESER. SOLUTION ROUGE | ROT FRISCHWASSETANK |
| 18N.01.023 | SB230V | 1 | SERBATOIO SOLUZIONE VERDE | SOLUTION TANK GREEN | RESER. SOLUTION VERT | GRUN FRISCHWASSETANK |
| 18N.01.024 | VS211 | 1 | VITE SVASATA A CROCE M 5x12 UNI 768 | SCREW M5x12 | VIS | SCHRAUBE |
| 18N.01.025 | BO253 | 1 | BOCCOLA SOLLEVAMENTO SERB.RECUPERO | RECOVERY TANK LIFTING | COQUILLE SOULEVEMENT | BUCHSE |
| 18N.01.026 | VP086 | 2 | POMELLO M8x25 A 3 LOBI D.55 | KNOB M8x25 | POMMEAU | KNOPF |
| 18N.01.027 | MN101 | 1 | SEMIMANICO DX | RIGHT HALF HANDLE | DEMI-MANCHE DROIT | RECHTEHALBHEFT |
| 18N.01.028 | CO175 | 1 | COPERCHIO SUPERIORE LEVA AVANZAMENT | UPPER COVER | COUVERCLE SUPERIEUR L | OBENDECKEL |
| 18N.01.029 | VS216 | 2 | VITE SVASATA A CROCE M5x35 UNI 7688 | SCREW | VIS | SCHRAUBE |
| 18N.01.030 | VA260 | 1 | VITE AUTOFILET. TC 3,5x16 UNI 6954/ | SELF THREADING SCREW | VIS | SCHRAUBE |
| 18N.01.031 | RO300 | 1 | RONDELLA SLARGATA DIAM. 5x15 UNI659 | WASHER | RONDELLE | SCHEIBE |
| 18N.01.032 | ML125 | 1 | MOLLA RITORNO LEVA AVANZ. C72 3 SPI | SPRING | RESSORT | FEDER |
| 18N.01.033 | LV297 | 1 | LEVA AVANZAMENTO IN PLASTICA | PLASTIC LEVER | LEVIER AVANCEMENT EN | HEBEL |
| 18N.01.034 | VA560 | 2 | VITE AUTOFORANTE TC 3,5x16 UNI 6954 | SCREW | VIS | SCHRAUBE |
| 18N.01.035 | VS204 | 2 | VITE SVASATA A CROCE M3x18 UNI7688 | SCREW | VIS M3x18 | SCHRAUBE |
| 18N.01.036 | SU455 | 1 | BASETTA IN PLASTICA SUPPORTO MICRO | SUPPORT | SUPPORT | STUETZ |
| 18N.01.037 | IN009 | 1 | MICRO SWITCH | MICROSWITCH | MICRO INTERRUPTEUR | MIKROSCHALTER |
| 18N.01.038 | DD250 | 2 | DADO AUTOBLOCCANTE M3 UNI7474 ZNT. | SELF-LOCKING NUT | ECROU DE SURETE | MUTTER |
| 18N.01.039 | CO176 | 1 | COPERCHIO INFERIORE LEVA AVANZAMENT | LOWER COVER | COUVERCLE INFERIEUR L | UNTENDECKEL |
| 18N.01.040 | CW092 | 1 | CAVO PER SCATOLA LEVA AVANZAMENTO | CABLE | CABLE | KABEL |
| 18N.01.041 | KIT943 | 1 | KIT LEVA AVANZAMENTO I16/18NEW | FORWARD LEVER KIT | KIT LEVRIER ADVANCEME | BETRIEBSHEBEL |
| 18N.01.042 | PE324 | 1 | PERNO GIUNZIONE MANICO ZNT. | PIN | PIVOT ASSEMBLAGE MANC | BOLZEN |
| 18N.01.043 | MN120 | 2 | MANOPOLA GUIDA MACCHINA UOMO A TERRA | HAND GRIP | POIGNEE | KNOPF |
| 18N.01.044 | VS213 | 2 | VITE SVASATA A CROCE M5x10 UNI 7688 | SCREW | VIS | SCHRAUBE |
| 18N.01.045 | MN100 | 1 | SEMIMANICO SX | LEFT HALF HANDLE | DEMI-MANCHE GAUCHE | LINKHALBHEFT |
| 18N.01.046 | MV156 | 2 | ROSETTA DENTATA LATO SERB. 4 FORI | TOOTHED WASHER | RONDELLE | ZAHNSCHEIBE |
| 18N.01.047 | VS219 | 8 | VITE SVASATA A CROCE M5x16 UNI 7688 | SCREW | VIS M5x16 | SCHRAUBE |
| 18N.01.048 | RC132 | 1 | TAPPO 1/2" IN PVC | PLUG | BOUCHON | STOPFEN |
| 18N.01.049 | GR126 | 1 | GUARNIZIONE FERMA TAPPO SBR 2 mm | GASKET | GARNITURE | DICHTUNG |

I20BNEW

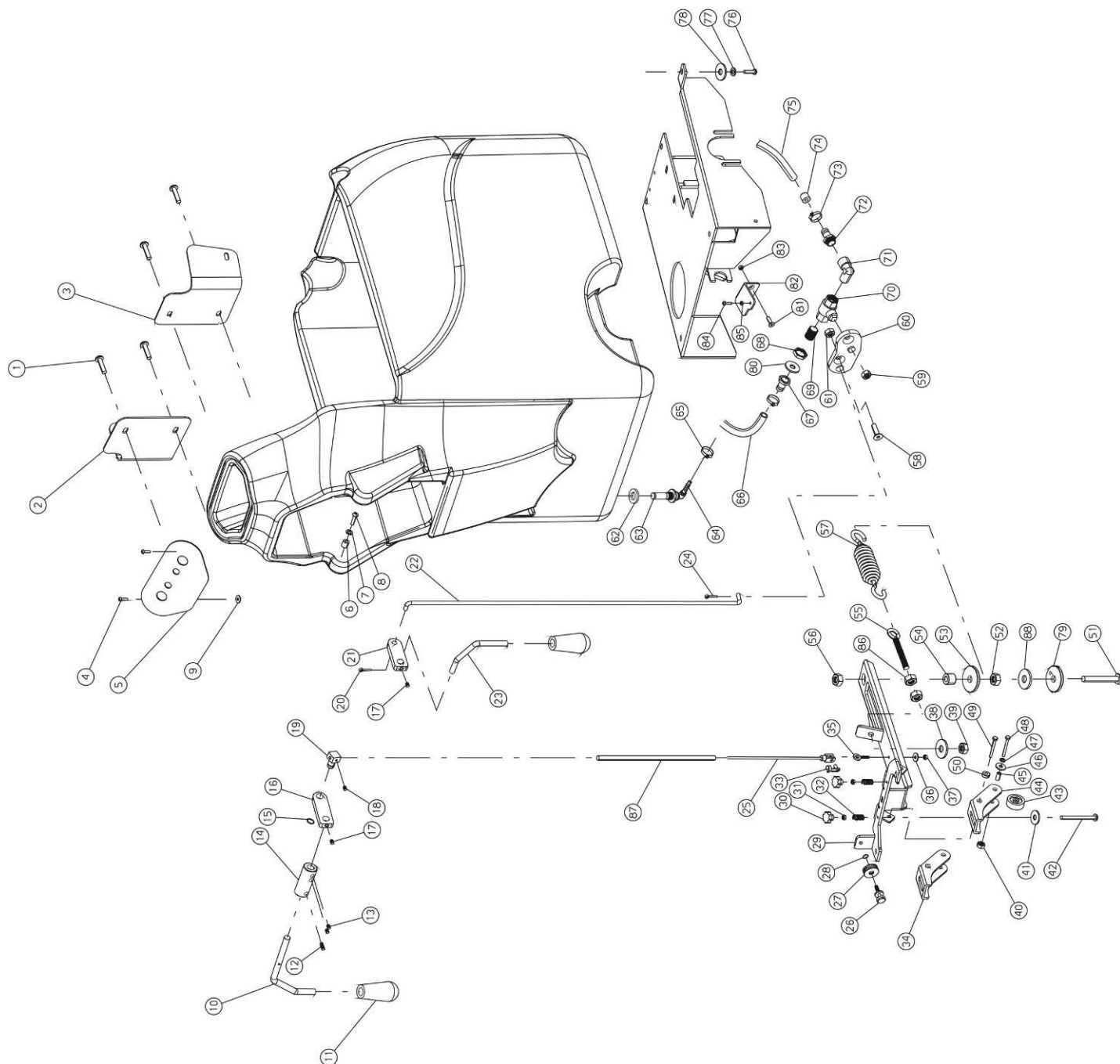
TAV. 1



| N.Position | Code Num | Qta | Descrizione | Description | Description | Bezeichnung |
|------------|----------|-----|-------------------------------------|---------------------|-----------------------|----------------|
| 18N.01.050 | RC089 | 1 | RACCORDO F.1/2" IN PVC P/GOMMA 15- | UNION | RACCORD | ANSCHLUSS |
| 18N.01.051 | TB376 | 1 | TUBO D.16 C/ANIMA IN ACC.L=480mm | HOSE D.16 L=510mm | TUYAU D.16 | ROHR D.16 |
| 18N.01.052 | VC211 | 2 | VITE CILIN.CROCE M5x10 UNI 7687 ZNT | SCREW | VIS | SCHRAUBE |
| 18N.01.053 | RO253 | 2 | RONDELLA SPACCATA DIAM. 5 UNI 1751A | WASHER | RONDELLE | SCHEIBE |
| 18N.01.054 | RO300 | 2 | RONDELLA SLARGATA DIAM. 5x15 UNI659 | WASHER | RONDELLE | SCHEIBE |
| 18N.01.055 | MI234 | 2 | MOLLA FERMA TUBO | HOSE-STOPPER SPRING | RESSORT D'ARRET TUYAU | FEDER |
| 18N.01.056 | FS002 | 2 | FASCETTA 12/20 INOX FASCIA 9 | CLAMP 12/20 | BANDE 12/20 INOX | SHELLE |
| 18N.01.057 | RC115 | 1 | RACCORDO M P/GOMMA 1/2"x16 | CONNECTOR | CONNECTEUR | STECKER |
| 18N.01.058 | TA059 | 1 | TAPPO ISPEZIONE PER SERBATOIO RECUP | RECOVERY TANK PLUG | BOUCHON DE INSPECTION | STOPFEN |
| 18N.01.059 | GR184 | 1 | GUARNIZIONE X TAPPO ISPEZIONE SERB. | GASKET | GARNITURE POUR BOUCHO | DICHTUNG |
| 18N.01.060 | VA407 | 1 | VITE AUTOFILET. TC 3.9x45 INOX | SCREW | VIS AUTO FILETEUSE | SCHRAUBE |
| 18N.01.061 | DD252 | 2 | DADO AUTOBLOCCANTE M5 | NUT | ECROU DE SURETE | MUTTERSCHRAUBE |
| 18N.01.062 | RO350 | 2 | RONDELLA DENTELLATA D.5 mm ZINCATA | WASHER | RONDELLE | SCHEIBE |

I20BNEW

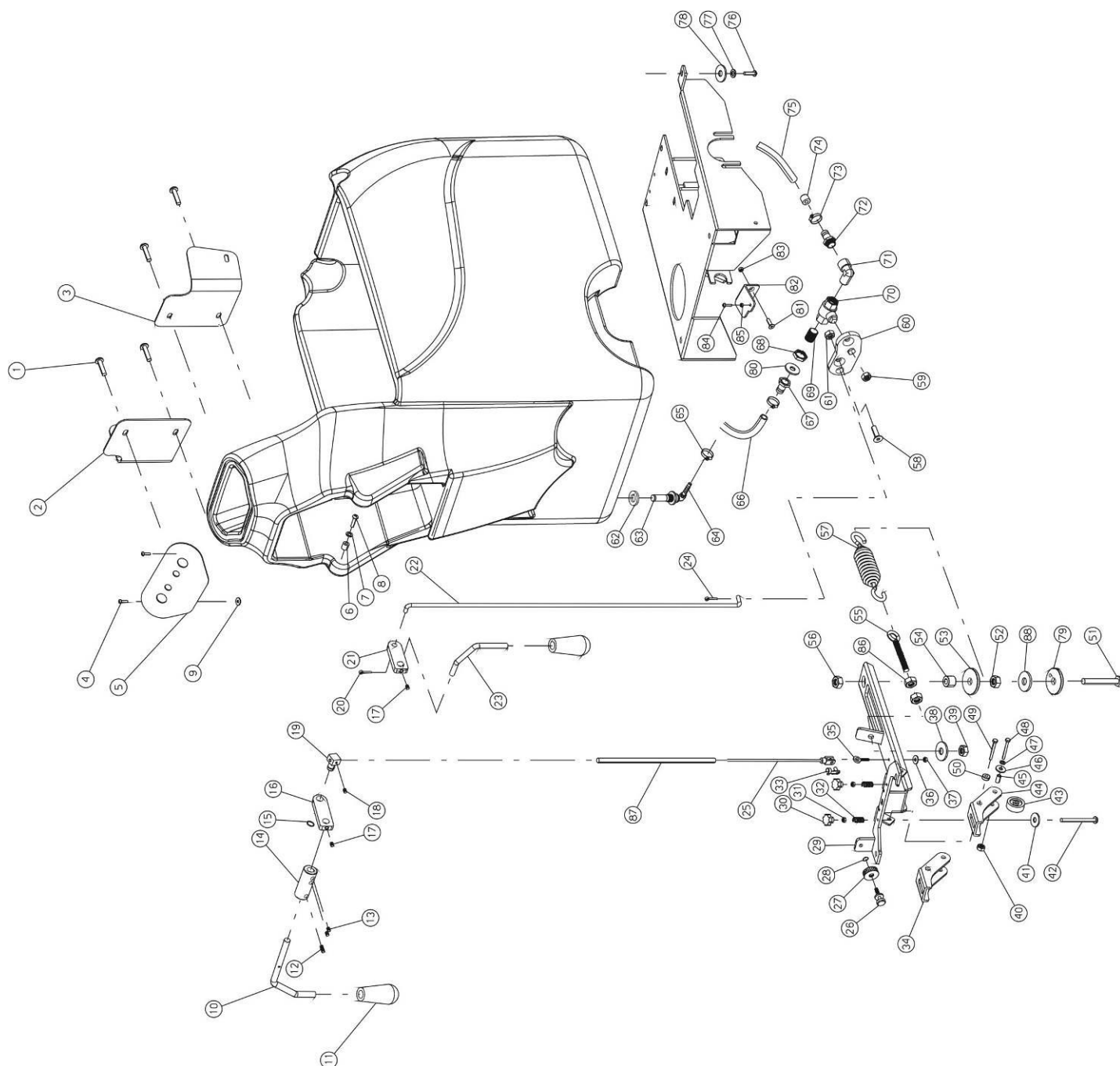
TAV.2



| N.Position | Code Num | Qta | Descrizione | Description | Description | Bezeichnung |
|------------|----------|-----|-------------------------------------|-----------------------|-----------------------|------------------------|
| 18N.02.001 | VC913 | 6 | VITE TESTA COMBI M6x10 ZINCATA | SCREW | VIS M6x10 | SCHRAUBE |
| 18N.02.002 | TP183 | 1 | RINFORZO SERBATOIO SX | LEFT REINFORCEMENT | RENFORT RESERVOIR GAU | LINKBEFESTIGUNGSTANK |
| 18N.02.003 | TP182 | 1 | RINFORZO SERBATOIO DX | RIGHT REINFORCEMENT | RENFORT RESERVOIR DRO | RECHTEBEFESTIGUNGSTANK |
| 18N.02.004 | VA251 | 4 | VITE AUTOF.TC 3.9x13 UNI 6954/71 ZN | SCREW | VIS TC 3.9X13 | BLECHSCHRAUBE |
| 18N.02.005 | PL046 | 1 | PLANCIA COMANDI C/INTERRUT.A LEVETT | CONTROL BOARD | TABEAU DE BORD | BRUCKENDECK |
| 18N.02.006 | DT237 | 1 | DISTANZIALE SOLL SQUEEGEE D.10 d.5 | SQUEEGEE LIFTING SPAC | ENTRETOISE SOULEV. SU | SQUEEGEE DISTANZSTUCK |
| 18N.02.007 | RO453 | 1 | ROSETTA SPACCATA D.5 UNI 1751 INOX | WASHER | RONDELLE | SCHEIBE |
| 18N.02.008 | VC214 | 1 | VITE CILIN.CROCE M5x20 UNI 7687 ZNT | SCREW | VIS | ZYLINDERSCHRAUBE |
| 18N.02.009 | SP012 | 1 | SPINA ELASTICA 5x30 UNI 6873 | TENSION PIN | CONNECTEUR | SPANNSTIFT |
| 18N.02.010 | LV433 | 1 | LEVA COMANDO SOLLEVAMENTO SQUEEGEE | SQUEEGEE LIFTING LEVE | LEVIER SOULEVEMENT SU | HEBEL |
| 18N.02.011 | VP085 | 2 | VOLANTINO MOD.MCO/25x55 D.10 | HANDWHEEL | VOLANT | HANDRAD |
| 18N.02.012 | VG017 | 1 | GRANO M6x16 C/PUNTA UNI 5927/67 | DOWEL | GRAIN | DUEBEL MIT SPITZE |
| 18N.02.013 | VG020 | 2 | GRANO M6x8 C/PUNTA UNI 5927 | DOWEL | GRAIN | DUEBEL MIT SPITZE |
| 18N.02.014 | MN111 | 1 | MANICOT.FINE CORSA LEVA COM.SOLLEV. | SLEEVE LIMIT | LIMITE MANCHE | MUFFE |
| 18N.02.015 | SG001 | 1 | ANELLO SEEGER PER EST.DIAM.10 UNI 7 | O-RING | SEEGER | SEEGERRING |
| 18N.02.016 | LV430 | 1 | LEVA RINVIO SOLLEVAMENTO SQUEEGEE F | LEVER | LEVIER SOULEV. SUCEUR | HEBEL |
| 18N.02.017 | VG020 | 2 | GRANO M6x8 C/PUNTA UNI 5927 | DOWEL | GRAIN | DUEBEL MIT SPITZE |
| 18N.02.018 | VG052 | 1 | GRANO M6x8 SENZA PUNTA UNI5923 | DOWEL | GRAIN | DUEBEL MIT SPITZE |
| 18N.02.019 | MV003 | 1 | MORSETTO FILO | WIRE TERMINAL | ETAU FIL | DRAHTKLEMME |
| 18N.02.020 | CP208 | 1 | COPPIGLIA A SPILLO D=1mm | SPLIT PIN D=1mm | GOUPILLE D=1mm | SPLINT |
| 18N.02.021 | LV431 | 1 | LEVA RINVIO RUBINETTO SOLUZIONE FE5 | LEVER | LEVIER ROBINET SOLUTI | HEBEL |
| 18N.02.022 | TI190 | 1 | TIRANTE RUBINETTO SOLUZIONE | SOLUTION TAP TIE ROD | TIRANT ROBINET SOLUTI | SPANNSTANGE |
| 18N.02.023 | LV432 | 1 | LEVA COMANDO RUBINETTO SOLUZIONE | SOLUTION TAP LEVER | LEVIER ROBINER SOLUTI | HEBEL |
| 18N.02.024 | MV006 | 1 | COPIGLIA A SPILLO DIAM. 1,3 | SPRIT PIN | GOUPILLE | SPLINT |
| 18N.02.025 | MI361 | 1 | FILO D.3 CON FORCELLA M6 LUNGA+CLIP | WIRE | FIL D.3 | LEITUNG |
| 18N.02.026 | VI007 | 1 | REGOLATORE SQUEEGEE | REGULATORS | REGULATEUR | SAUGFUSSREGLER |
| 18N.02.027 | GH049 | 1 | GHIERA OTTONE D.35 M8 | BRASS RING NUT | EMBOUT EN LAITON D.38 | NUTMUTTER |
| 18N.02.028 | GI040 | 1 | O-RING NBR 70 11X3 | O-RING NBR 70 | O-RING NBR 70 | O-RING NBR 70 11X3 |
| 18N.02.029 | SU678 | 1 | SUPPORTO SQUEEGEE | SQUEEGEE SUPPORT | SUPPORT SUCEUR | SQUEEGEE HALTER |
| 18N.02.030 | VP5007 | 2 | POMELLO M6 FEMMINA CHIUSO VB/30 6 L | KNOB | POMMEAU | KUGELGRIFF |
| 18N.02.031 | DD404 | 2 | DADO M6 UNI 5588 INOX | STAINLESS STEEL NUT | ECROU | MUTTER |
| 18N.02.032 | ML001 | 2 | MOLLA INOX AISI 302 | LEVERS SPRING | RESSORT | FEDER |
| 18N.02.033 | MI028 | 1 | PERNO CON MOLLA PER FORCELLA M6 (lu | PIN | PIVOT AVEC RESSORT | BOLZEN MIT FEDER |
| 18N.02.034 | SU680 | 1 | SUPPORTO RUOTA SQUEEGEE SX | SUPPORT FOR LEFT SQUE | SUPPORT ROUE SUCEUR G | SQUEEGEE LINKS LAGERR |
| 18N.02.035 | MI374 | 1 | GOLFARE SUPPORTO SQUEEGEE 6X45-20 | SQUEEGEE SUPPORT EYEB | CROCHET SUPPORT SUCEU | OSENSCHRAUBE SQUEEGEE |
| 18N.02.036 | RO454 | 1 | RONDELLA SPACCATA DIAM. 6 UNI 1751 | WASHER | RONDELLE | SCHEIBE |
| 18N.02.037 | DD404 | 1 | DADO M6 UNI 5588 INOX | STAINLESS STEEL NUT | ECROU | MUTTER |
| 18N.02.038 | RO502 | 1 | RONDELLA SLARG. D.8X24 UNI6593 INOX | INOX WASHER | RONDELLE | SCHEIBE |
| 18N.02.039 | DD454 | 1 | DADO AUTOBLOCCANTE M8 INOX | SELFLOCKING NUT | ECROU DE SURETE | SICHERUNGSMUTTER |
| 18N.02.040 | SU679 | 1 | SUPPORTO RUOTA SQUEEGEE DX | SUPPORT FOR RIGHT SQU | SUPPORT ROUE SUCEUR D | SQUEEGEE RADHALTER |
| 18N.02.041 | MI362 | 2 | RONDELLA DI FINITURA 007-0 MP 6.4x1 | WASHER | RONDELLE | SCHEIBE |
| 18N.02.042 | VC426 | 1 | VITE CILIN.CROCE M6x45 UNI 7687 INO | SCREW | VIS | SCHRAUBE |
| 18N.02.043 | RT192 | 2 | RUOTA IN NYLON D.35xd.11,2xL 20 | WHEEL | ROUE | RAD |
| 18N.02.044 | SU679 | 1 | SUPPORTO RUOTA SQUEEGEE DX | SUPPORT FOR RIGHT SQU | SUPPORT ROUE SUCEUR D | SQUEEGEE RADHALTER |
| 18N.02.045 | BO252 | 2 | BOCCOLA INOX D.11 d.6,1 L.21 | BUSH D. 11 | COQUILLE EN LAITON | BUCHSE |
| 18N.02.046 | RO501 | 2 | RONDELLA SLARG.D.6X18 UNI6592/69 IN | WASHER | RONDELLE | SCHEIBE |
| 18N.02.047 | RO454 | 2 | RONDELLA SPACCATA DIAM. 6 UNI 1751 | WASHER | RONDELLE | SCHEIBE |
| 18N.02.048 | VE446 | 2 | VITE ESAGONALE M6x30 UNI 5739 INOX | SCREW | VIS | SECHSECKIGE SCHRAUBE |
| 18N.02.049 | VE449 | 2 | VITE ESAGONALE M6x45 UNI 5737 INO | SCREW | VIS | SCHRAUBE |
| 18N.02.050 | BO158 | 2 | BOCCOLA CAVETTO SOLLEV. SQUEEGEE | BUSH | DOUILLE | BUCHSE |
| 18N.02.051 | VE489 | 1 | VITE ESAGONALE M10x70 UNI5739 INOX | SCREW | VIS | SCHRAUBE |
| 18N.02.052 | DD406 | 1 | DADO M10 UNI 5588-65 INOX | INOX NUT | ECROU | MUTTER |
| 18N.02.053 | VI010 | 1 | RONDELLA SPECIALE | WASHER | RONDELLE | SCHEIBE |
| 18N.02.054 | DT214 | 1 | DISTANZIALE PULEGGIA TENDICINGHIA | PULLEY SPACER | ENTRETOISE | DISTANZSTUCK |
| 18N.02.055 | MI371 | 1 | VITE AD OCCHIO M8X57 ZINCATO - | TIE ROD | TIRANT A OEIL M8x55 | SPANNSTANGE |
| 18N.02.056 | DD455 | 1 | DADO AUTOBLOCCANTE M10 INOX - | SELFLOCKING NUT | ECROU DE SURETE | SICHERUNGSMUTTER |
| 18N.02.057 | ML222 | 1 | MOLLA PRESSIONE REGOLAZ.SQUEEGEE AI | SPRING FOR SQUEEGEE R | RESSORT PRESSION REGU | FEDER |
| 18N.02.058 | VS406 | 2 | VITE SVASATA TC M4x14 UNI7688 INOX | SCREW | VIS M4x14 | SCHRAUBE |
| 18N.02.059 | DD270 | 1 | DADO M7x1 CH11 H3,5 - | NUT | ECROU | MUTTER |
| 18N.02.060 | LV415 | 1 | LEVA RUBINETTO SOLUZIONE IN ACCIAIO | SOLUTION VALVE INOX L | LEVIER ROBINET SOLUTI | HEBEL |
| 18N.02.061 | DD451 | 2 | DADO AUTOBLOCCANTE M4 INOX UNI 7473 | NUT | ECROU DE SURETE | SELBSTSICHERNDE SCHRA |
| 18N.02.062 | GR140 | 1 | GUARNIZIONE PER RACCORDO FILTRO SOL | GASKET | GARNITURE | DICHTUNG |
| 18N.02.063 | FT035 | 1 | FILTRO SOLUZ.IN ACCIAIO MAGLIE LARG | FILTER | FILTRE | FILTER |
| 18N.02.064 | FT056 | 1 | FILTRO SOLUZ.IN ACCIAIO MAGLIE STRE | STEEL SOLUTION FILTER | FILTRE SOLUTION EN AC | FILTER |
| 18N.02.065 | RC151 | 1 | RACCORDO MASCHIO 1/2"90°P/GOMMA 15 | MALE CONNECTION | RACCORD MALE | ANSCHLUSS |
| 18N.02.066 | FS002 | 2 | FASCETTA 12/20 INOX FASCIA 9 | CLAMP 12/20 | BANDE 12/20 INOX | SCELLE |
| 18N.02.067 | TB377 | 1 | TUBO D.14 L=140mm | HOSE D.14 L=140mm | TUYAU D.14 L=140mm | ROHR D.14 L=140mm |
| 18N.02.068 | RC020 | 1 | RACCORDO FEMMINA 3/8" P/GOMMA 12 | UNION | RACCORD | ANSCHLUSS |
| 18N.02.069 | GH007 | 1 | GHIERA RUBINETTO SOLUZIONE 3/8 | SOLUT.VALVE RING NUT | EMBOUT | GITTER |
| 18N.02.070 | RC119 | 1 | RACCORDO 3/8" L.37 F.11 OTTONE | UNION | RACCORD | MESSINGANSCHLUSS |
| 18N.02.071 | RB007 | 1 | RUBINETTO SOLUZIONE F/F 3/8G L=51mm | SOLUTION VALVE | ROBINET | HAHN |
| 18N.02.072 | RC073 | 1 | RACCORDO M/F 90° 3/8 | UNION | RACCORD | ANSCHLUSS |
| 18N.02.073 | RC217 | 1 | RACCORDO PORTAG 3/8 MASCHIO P/GOMMA | UNION | RACCORD | VERBINDUNG |
| 18N.02.074 | FS012 | 1 | FASCETTA 10/16 | CLAMP 10/16 | AGRAFE | SCELLE |
| 18N.02.075 | DT055 | 1 | DISTANZIALE IN PLASTICA | PLASTIC SPACER | ENTRETOISE | ABSTANDSTUECK |
| 18N.02.076 | TB349 | 1 | TUBO D.10 IN GOMMA L=410 | RUBBER HOSE D.10 L=41 | TUYAU D.10 L=410 | ROHR |
| 18N.02.077 | VC423 | 5 | VITE CILIN.CROCE M6x16 UNI 7687 INO | SCREW | VIS | ZYLINDERSCHRAUBE |
| 18N.02.078 | RO454 | 5 | RONDELLA SPACCATA DIAM. 6 UNI 1751 | WASHER | RONDELLE | SCHEIBE |
| 18N.02.079 | RO501 | 5 | RONDELLA SLARG.D.6X18 UNI6592/69 IN | WASHER | RONDELLE | SCHEIBE |
| 18N.02.080 | VI079 | 1 | RONDELLA SPECIALE | WASHER | RONDELLE | SCHEIBE |

I20BNEW

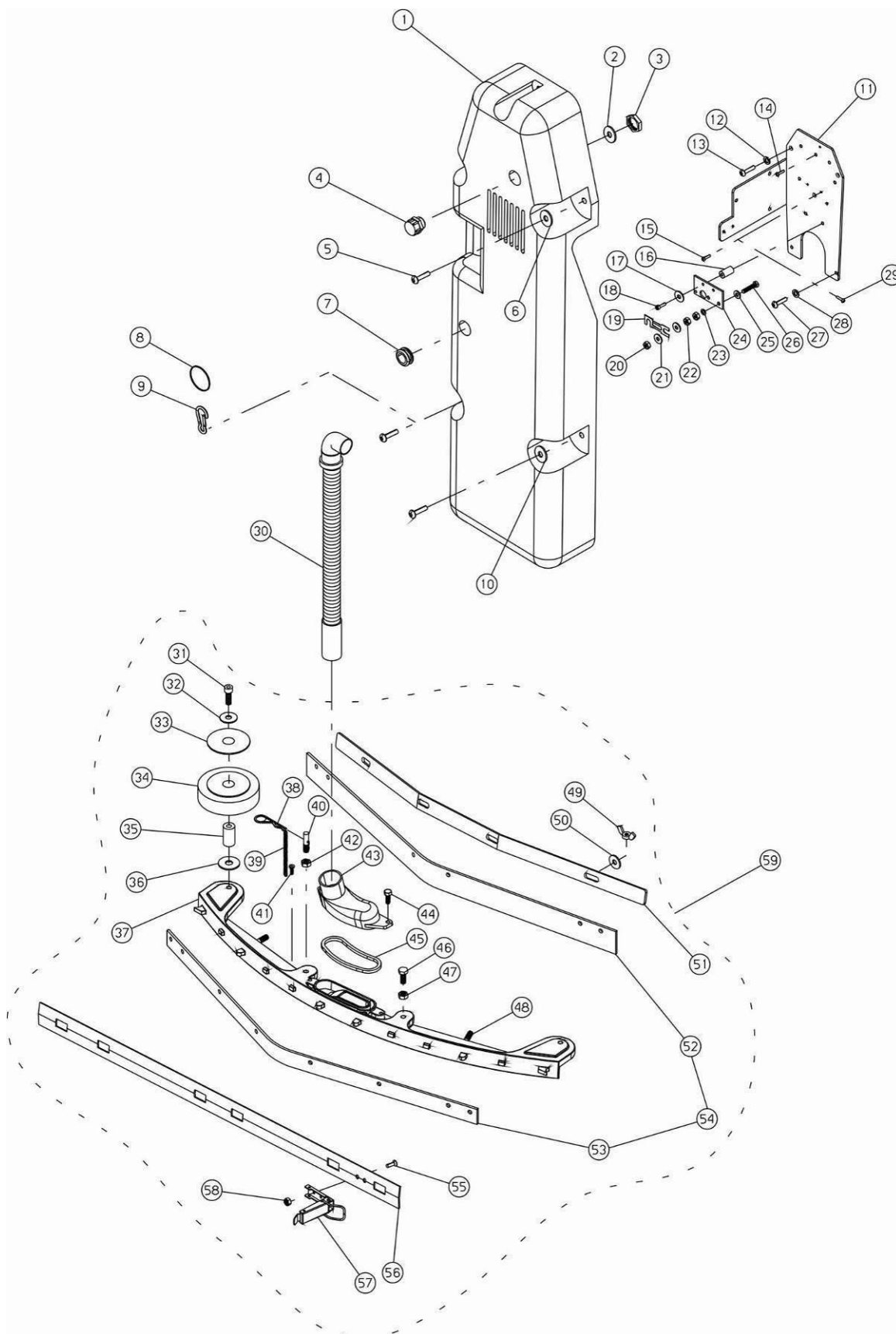
TAV.2



| N.Position | Code Num | Qta | Descrizione | Description | Description | Bezeichnung |
|------------|----------|-----|--|-------------|------------------|-----------------------|
| 18N.02.080 | RO915 | 1 | RONDELLA DENT.EST.INOX D.16 DIN 6798 | WASHER | RONDELLE | SCHEIBE |
| 18N.02.081 | VS211 | 2 | VITE SVASATA A CROCE M 5x12 UNI 7688 ZNT | SCREW | VIS | ZYLINDERSCHRAUBE |
| 18N.02.082 | LM760 | 1 | VITE SVASATA A CROCE M 5x12 UNI 7688 ZNT | SCREW | VIS | ZYLINDERSCHRAUBE |
| 18N.02.083 | DD466 | 2 | DADO AUTOB. M5 ALTO INOX UNI 7473 DIN982 | NUT | ECROUE DE SURETE | SELBSTSICHERNDE SCHRA |
| 18N.02.084 | VC413 | 1 | VITE CILIN.CROCE M5x16 UNI 7687 INOX | SCREW | VIS | ZYLINDERSCHRAUBE |
| 18N.02.085 | DD203 | 1 | DADO M5 UNI 5588/65 ZNT | NUT | ECROUE DE SURETE | SELBSTSICHERNDE SCHRA |
| 18N.02.086 | DD405 | 1 | DADO M10 UNI 5588-65 INOX MEDIO | NUT | ECROUE DE SURETE | SELBSTSICHERNDE SCHRA |
| 18N.02.087 | TB478 | 1 | TUBO CRISTAL 6X9 L=80MM | RUBBER HOSE | TUYAU | ROHR |
| 18N.02.088 | RO405 | 1 | RONDELLA NORM.DIAM. 10 UNI 6592 INOX | WASHER | RONDELLE | SCHEIBE |

I20BNEW

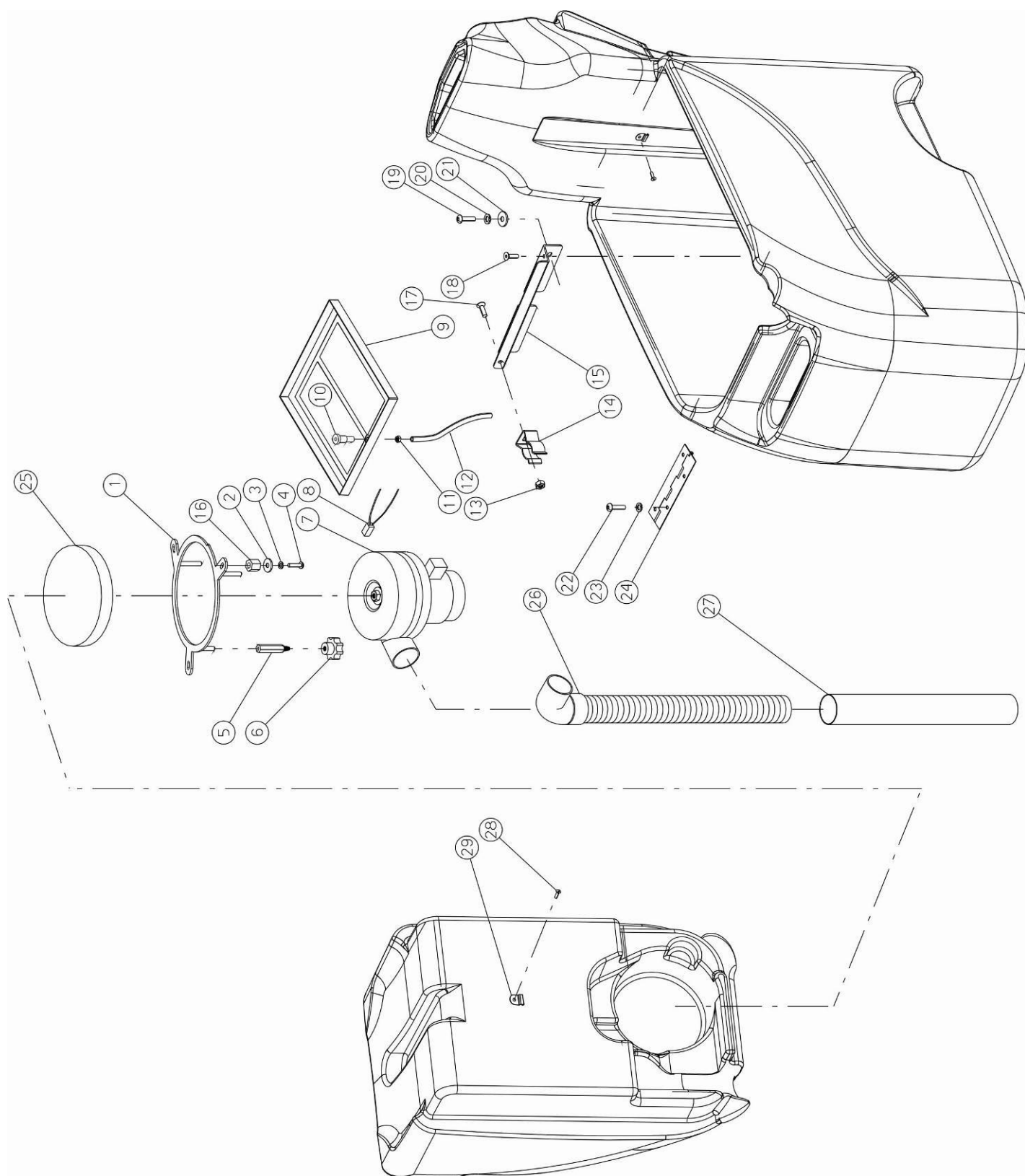
TAV.3



| N.Position | Code Num | Qta | Descrizione | Description | Description | Bezeichnung |
|------------|----------|-----|---|-----------------------|-----------------------|-----------------------|
| 18N.03.001 | CA288 | 1 | CARTER POSTER.COPERTUTA IMP.ELETT.N | ELECTRONIC SYSTEM REA | CARTER POSTERIEUR EQU | GEHAUSE |
| 18N.03.002 | RO354 | 1 | RONDELLA DENTELLATA D.20 | WASHER | RONDELLE | SCHEIBE |
| 18N.03.003 | GH011 | 1 | GHIERA PASSACAVO PG11 | FAIRLEAD RING NUT | EMBOUT | GITTER |
| 18N.03.004 | PY159 | 1 | PASSACAVO CON FERMA CAVO PG11 | FAIRLEAD | PASSE-CABLE | KABELDURCHGANG |
| 18N.03.005 | VA226 | 5 | VITE AUTOF. TC 4,8x25 UNI 6954/71 Z | SCREW | VIS | SCHRAUBE |
| 18N.03.006 | RO300 | 1 | RONDELLA SLARGATA DIAM. 5x15 UNI659 | WASHER | RONDELLE | SCHEIBE |
| 18N.03.007 | PY240 | 1 | PASSACAVO TELAIO MEDIO | FAIRLEAD | PASSE-CABLE | KABELDURCHGANG |
| 18N.03.008 | GI043 | 1 | ANELLO OR FPM 34,29X5,33 | RING | BAGUE | LAUFRING |
| 18N.03.009 | MI001 | 1 | MOSCHETTO | CATCH | MOUSQUETON | KARABINIERHAKEN |
| 18N.03.010 | RO301 | 4 | RONDELLA SLARGATA D.6x18 UNI 6592 Z | WASHER | RONDELLE | SCHEIBE |
| 18N.03.011 | SU681 | 1 | SUPPORTO GRUPPO ELETTRICO | ELECTRIC GROUP SUPPOR | SUPPORT GROUP ELECTRI | LAGER |
| 18N.03.012 | RO453 | 3 | ROSETTA SPACCATA D.5 UNI 1751 INOX | WASHER | RONDELLE | SCHEIBE |
| 18N.03.013 | VC212 | 3 | VITE CILIN.CROCE M5x12 UNI 7687 ZNT | SCREW | VIS | SCHRAUBE |
| 18N.03.014 | VC409 | 2 | VITE CILIN.CROCE M5x6 UNI 7687 INOX | SCREW | VIS | ZYLINDERSCHRAUBE |
| 18N.03.015 | VC204 | 1 | VITE CILIN.CROCE M4x16 UNI 7687 | SCREW | VIS | SCHRAUBE |
| 18N.03.016 | BO181 | 2 | BOCCOLA L=17 DE=12 DI=6,5 | BUSH | DOUILLE | BUCHSE |
| 18N.03.017 | RO500 | 2 | RONDELLA SLARG.D.5X15 UNI6592/69 IN | INOX WASHER | RONDELLE | SCHEIBE |
| 18N.03.018 | VB211 | 2 | VITE CIL. BRUGOLA M5x25 UNI 5931/77 | SCREW | VIS M5x25 | SCHRAUBE |
| 18N.03.019 | PY676 | 1 | FUSIBILE LAMELLARE 63A | FUSE | FUSIBLE | FLACHSICHERUNGSEINSAT |
| 18N.03.020 | DD905 | 2 | DADO M8 UNI 5588 OTTONE | BRASS NUT | ECROU DE SUR. LAITON | MUTTERSCHRAUBE |
| 18N.03.021 | RO502 | 2 | RONDELLA SLARG. D.8X24 UNI6593 INOX | INOX WASHER | RONDELLE | SCHEIBE |
| 18N.03.022 | DD905 | 4 | DADO M8 UNI 5588 OTTONE | BRASS NUT | ECROU DE SUR. LAITON | MUTTERSCHRAUBE |
| 18N.03.023 | RO455 | 6 | RONDELLA SPACCATA DIAM. 8 UNI 1751 | WASHER | RONDELLE | SCHEIBE |
| 18N.03.024 | PY424 | 1 | MORSETTIERA GRUP.ELETT. - | TERMINAL BOARD | BORNIER | KLEMMENBRETT |
| 18N.03.025 | RO502 | 4 | RONDELLA SLARG. D.8X24 UNI6593 INOX | INOX WASHER | RONDELLE | SCHEIBE |
| 18N.03.026 | VE965 | 3 | VITE ESAGONALE M8X35 UNI5737/77 OTT | SCREW | VIS | SCHRAUBE |
| 18N.03.027 | VC210 | 2 | VITE CILIN.CROCE M5x8 UNI 7687 | SCREW | VIS | ZYLINDERSCHRAUBE |
| 18N.03.028 | RO455 | 2 | RONDELLA SPACCATA DIAM. 8 UNI 1751 | WASHER | RONDELLE | SCHEIBE |
| 18N.03.029 | VC254 | 2 | VITE CILIN.CROCE M3x16 ZNT UNI7687 | SCREW | VIS M3x16 | SCHRAUBE |
| 18N.03.030 | TB367 | 1 | TUBO ASPIRAZIONE SQUEEGEE | SQUEEGEE VAC HOSE | TUYAU ASPIRATION SUCE | ROHR |
| 18N.03.031 | VE469 | 2 | VITE ESAGONALE M8X60 UNI5737/77 INO | SCREW | VIS | SECHSECKIGE SCHRAUBE |
| 18N.03.032 | RO502 | 2 | RONDELLA SLARG. D.8X24 UNI6593 INOX | INOX WASHER | RONDELLE | SCHEIBE |
| 18N.03.033 | RT155 | 2 | PARAFILO X RUOTA RT154 | WIRE | GARDE-FIL POUR ROUE R | MANTEL |
| 18N.03.034 | RT154 | 2 | RUOTA PARACOLPI GRIGIA 100X30 | GREY SHOCK ABSORBER W | ROUE HEURTOIRE GRISE | RAD |
| 18N.03.035 | BO202 | 2 | BOCCOLA RUOTA PARACOLPI 12x1.5x41 | BUSH | COQUILLE ROUE HEURTOI | BUCHSE |
| 18N.03.036 | RO322 | 2 | ANELLO DI SPESS.PS*8X14X0,5 DIN 988 | RING THICKNESS | EPAISSAUR DE L'ANNEAU | RINGDICKE |
| 18N.03.037 | SQ079 | 1 | SQUEEGEE PARABOLICO X ICM 16-18 | PARABOLIC SQUEEGEE | SUCEUR PARABOLIQUE | PARABOLISCH SQUEEGEE |
| 18N.03.038 | CP260 | 1 | COPIGLIA A GIRAMOLLA D.3 | SPLIT PIN | GOUPILLE | SPLINT |
| 18N.03.039 | MI171 | 1 | CATENELLA 7 MAGLIE 1.5x8x17 | CHAIN | CHAIN | KETTE |
| 18N.03.040 | PE295 | 1 | PERNO FISS. SQUEEGEE PARABOLICO PR8 | PARABOLIC SQUEEGEE FI | PIVOT DE FIXAGE SUCEU | BOLZEN |
| 18N.03.041 | VA409 | 1 | VITE AUTOFILET. TC 3.9x13 INOX | SCREW | VIS 3.9x13 INOX | SCHRAUBE |
| 18N.03.042 | DD405 | 1 | DADO M8 UNI 5588 INOX | INOX NUT | ECROU | MUTTER |
| 18N.03.043 | CO252 | 1 | COPERCHIO SIFONE SQUEEGEE | COVER | COUVERCLE SIPHON SUCE | DECKEL |
| 18N.03.044 | VE443 | 2 | VITE ESAGONALE M6x16 UNI 5739 INOX | HEXAGONAL SCREW | VIS | SECHSECKIGE SCHRAUBE |
| 18N.03.045 | GR185 | 1 | GUARNIZIONE OR IN VITON 82X3 | GASKET | GARNITURE | DICHTUNG |
| 18N.03.046 | VE462 | 2 | VITE ESAGONALE M8x25 UNI 5739 INOX | SCREW | VIS | SECHSECKIGE SCHRAUBE |
| 18N.03.047 | DD405 | 2 | DADO M8 UNI 5588 INOX | INOX NUT | ECROU | MUTTER |
| 18N.03.048 | MV139 | 4 | TRAFILA M6X28 INOX | STRAINER M6x28 | FILIERE M6x28 INOX | ZIEHRING |
| 18N.03.049 | VL450 | 4 | DADO AD ALETTE M6 UNI 5448 INOX - | NUT | ECROU | MUTTER |
| 18N.03.050 | RO501 | 4 | RONDELLA SLARG.D.6X18 UNI6592/69 IN | WASHER | RONDELLE | SCHEIBE |
| 18N.03.051 | LM706 | 1 | LISTELLO ANTERIORE SQUEEGEE | SQUEEGEE FRONT LISTEL | LATTE ANTERIEURE SUCE | DACHLATTE |
| 18N.03.052 | BP394 | 1 | LAMA ANTERIORE IN POLIURETANO 90 SHORE | 90 SHORE POLYURETHANE | BAVETTE ANTERIEURE | DER VORDERE SCHILD |
| 18N.03.053 | BP387 | 1 | LAMA ASPIRAZIONE IN PARA ROSSA 35 SHORE | GREY RUBBER VAC BLADE | LAME ASPIRATIONS GRIS | SCHILD |
| 18N.03.054 | KIT920 | 1 | KIT LAME ASPIRAZIONE | VAC RUBBER BLADES KIT | KIT BAVETTES ASPIRATI | SAUGEN SCHILDEN KIT |
| 18N.03.055 | VS410 | 2 | VITE SVASATA T/C M4x10 UNI 7688 INO | SCREW | VIS | SENKSCHEIBE |
| 18N.03.056 | LM707 | 1 | LISTELLO POSTERIORE SQUEEGEE | SQUEEGEE REAR LISTEL | LATTE POSTERIEURE SUC | DACHLATTE |
| 18N.03.057 | CC022 | 1 | GANCIO ATTACCO LISTELLO POSTERIORE | HOOK | CROCHET LATTE POSTERI | HAKEN |
| 18N.03.058 | DD451 | 2 | DADO AUTOBLOCCANTE M4 INOX UNI 7473 | NUT | ECROU DE SURETE | SELBSTSICHERNDE SCHRA |
| 18N.03.059 | KIT945 | 1 | KIT ASSEMBL.SQUEEGEE COMPLETO I18NEW | SQUEEGEE ASSEMBLY KIT | KIT ASSEMBLAGE SUCEUR | MONTAGE SQUEEGEE KIT |

I20BNEW

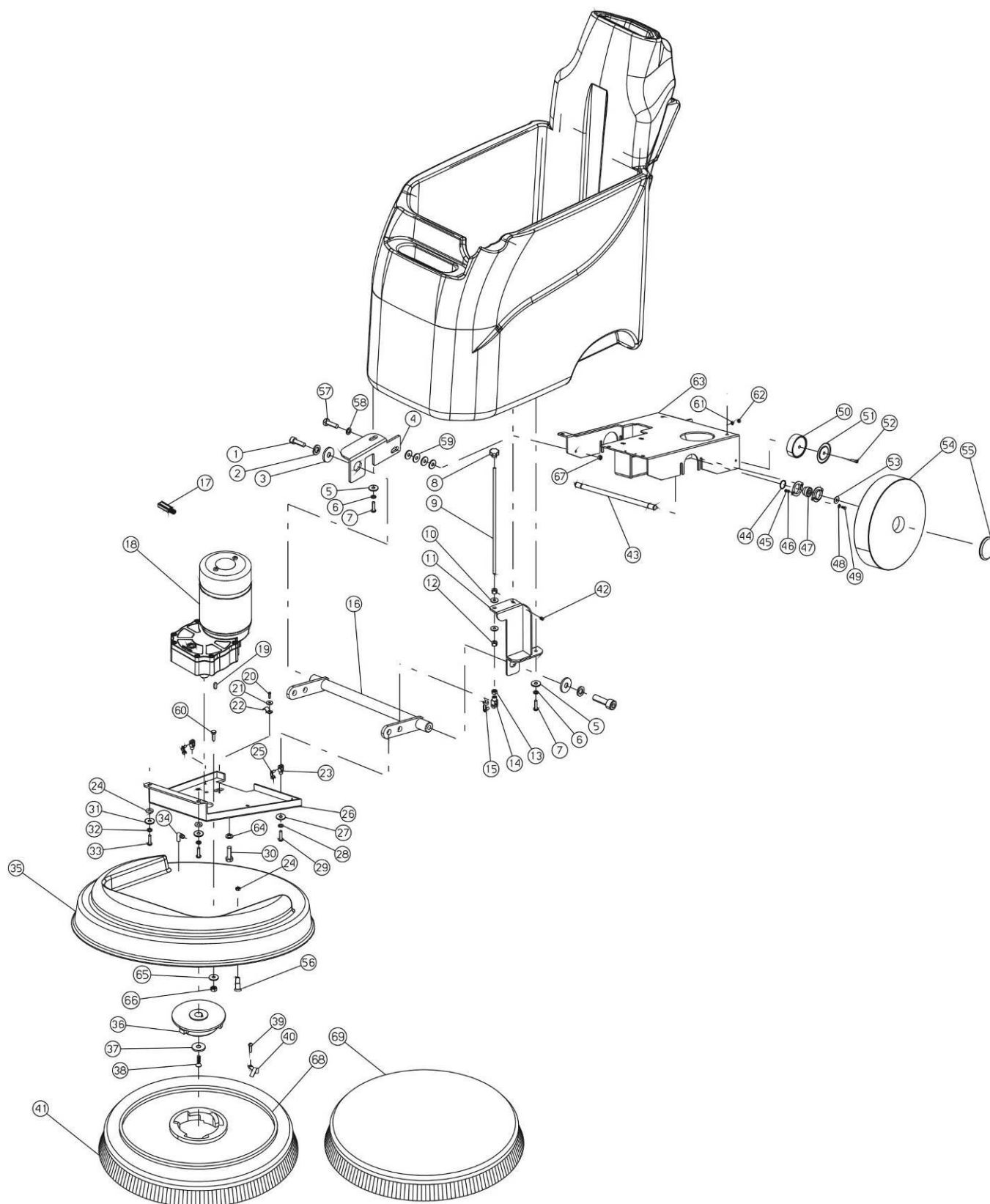
TAV.4



| N.Position | Code Num | Qta | Descrizione | Description | Description | Bezeichnung |
|------------|----------|-----|-------------------------------------|-----------------------|-----------------------|-----------------------|
| 18N.04.001 | SU677 | 1 | SUPPORTO MOTORE ASPIRAZIONE | VACUUM MOTOR SUPPORT | SUPPORT MOTEUR ASPIRA | LAGER SAUGERMOTOR |
| 18N.04.002 | RO301 | 3 | RONDELLA SLARGATA D.6x18 UNI 6592 Z | WASHER | RONDELLE | SCHEIBE |
| 18N.04.003 | RO254 | 3 | RONDELLA SPACCATA DIAM. 6 UNI 1751 | WASHER | RONDELLE | SCHEIBE |
| 18N.04.004 | VC229 | 3 | VITE CILIN.CROCE M6X16 UNI 7687 | SCREW | VIS | SCHRAUBE |
| 18N.04.005 | DT256 | 3 | DISTANZIALE MOTORE ASPIRAZIONE | VACUUM MOTOR SPACER | ENTRETOISE MOTEUR ASP | SAUGERMOTOR DISTANZST |
| 18N.04.006 | VP5007 | 3 | POMELLO M6 FEMMINA CHIUSO VB/30 6 L | KNOB | POMMEAU | KUGELGRIFF |
| 18N.04.007 | MO448 | 1 | MOTORE ASPIRAZIONE I16/18NEW BATTER | VAC MOTOR I16/18NEW B | MOTEUR ASPIRATION | ANSAUGMOTOR |
| 18N.04.008 | MP257 | 2 | CARBONCINO x MOTORE MO217 24V | CARBON BRUSH | CHARBON | KOEHLE |
| 18N.04.009 | SB219 | 1 | VASCHETTA BATTERIA | BATTERY CASE | CUVE BATTERIE | BATTERIE SCHWIMMERGEH |
| 18N.04.010 | RC114 | 2 | RACCORDO PER SCARICO ACIDO INOX | UNION | RACCORD | ANSCHLUSS |
| 18N.04.011 | DD232 | 2 | DADO M8 BASSO ZINCATO | NUT M8 | ECROU M8 | MUTTER |
| 18N.04.012 | TB378 | 1 | TUBO D.10 L=310mm | HOSE D.10 L=290mm | TUYAU D.10 L=290mm | ROHR D.10 |
| 18N.04.013 | DD403 | 1 | DADO M5 UNI 5588/65 INOX | INOX NUT | ECROU | MUTTER |
| 18N.04.014 | ML149 | 1 | MOLLA FLEX IN FERRO D=50 | SPRING | RESSORT | FEDER |
| 18N.04.015 | SU676 | 1 | SUPPORTO BATTERIA | BATTERY SUPPORT | SUPPORT BATTERIE | BATTERIE LAGER |
| 18N.04.016 | DT141 | 3 | DISTANZIALE D.15 d.7 h.10 IN ALLUMI | SPACER | ENTRETOISE | DISTANZSTUECK |
| 18N.04.017 | VS219 | 1 | VITE SVASATA A CROCE M5x16 UNI 7688 | SCREW | VIS M5x16 | SCHRAUBE |
| 18N.04.018 | VS219 | 1 | VITE SVASATA A CROCE M5x16 UNI 7688 | SCREW | VIS M5x16 | SCHRAUBE |
| 18N.04.019 | VC212 | 2 | VITE CILIN.CROCE M5x12 UNI 7687 ZNT | SCREW | VIS | SCHRAUBE |
| 18N.04.020 | RO253 | 2 | RONDELLA SPACCATA DIAM. 5 UNI 1751A | WASHER | RONDELLE | SCHEIBE |
| 18N.04.021 | RO300 | 2 | RONDELLA SLARGATA DIAM. 5x15 UNI659 | WASHER | RONDELLE | SCHEIBE |
| 18N.04.022 | VC222 | 4 | VITE CILIN.CROCE M6x12 UNI 7687 | SCREW | VIS | ZYLINDERSCHRAUBE |
| 18N.04.023 | RO254 | 4 | RONDELLA SPACCATA DIAM. 6 UNI 1751 | WASHER | RONDELLE | SCHEIBE |
| 18N.04.024 | MV162 | 1 | CERNIERA APERT.SERB.REC.INOX SPINA | REC.TANK OPENING HING | CHARNIERE OUVERTURE R | SCHARNIER SCHMUTZWASS |
| 18N.04.025 | GR103 | 1 | GUARNIZIONE A L (ALTA) 145x10 SH 35 | L GASKET | GARNITURE | L-DICHTUNG |
| 18N.04.026 | TB365 | 1 | TUBO SCARICO MOTORE ASPIRAZIONE | VAC MOTOR DRAIN HOSE | TUYAU DECHARGE MOTEUR | SAUGERMOTOR AUSGANGSR |
| 18N.04.027 | FT079 | 1 | SILENZIATORE D.42X80 H.240-260 | SILENCER D.42x80 H.24 | SILENCIEUX | SCHALLDAMPFER |
| 18N.04.028 | VA231 | 6 | VITE AUTOFILET. TC 4.8x9.5 UNI 6954 | SCREW | VIS | SCHRAUBE |
| 18N.04.029 | MI280 | 3 | SUPP.AD OCCHIELLO X FASCET.FORO LAT | EYELET SUPPORT | SUPPORT | OESESTUETZE |

I20BNEW

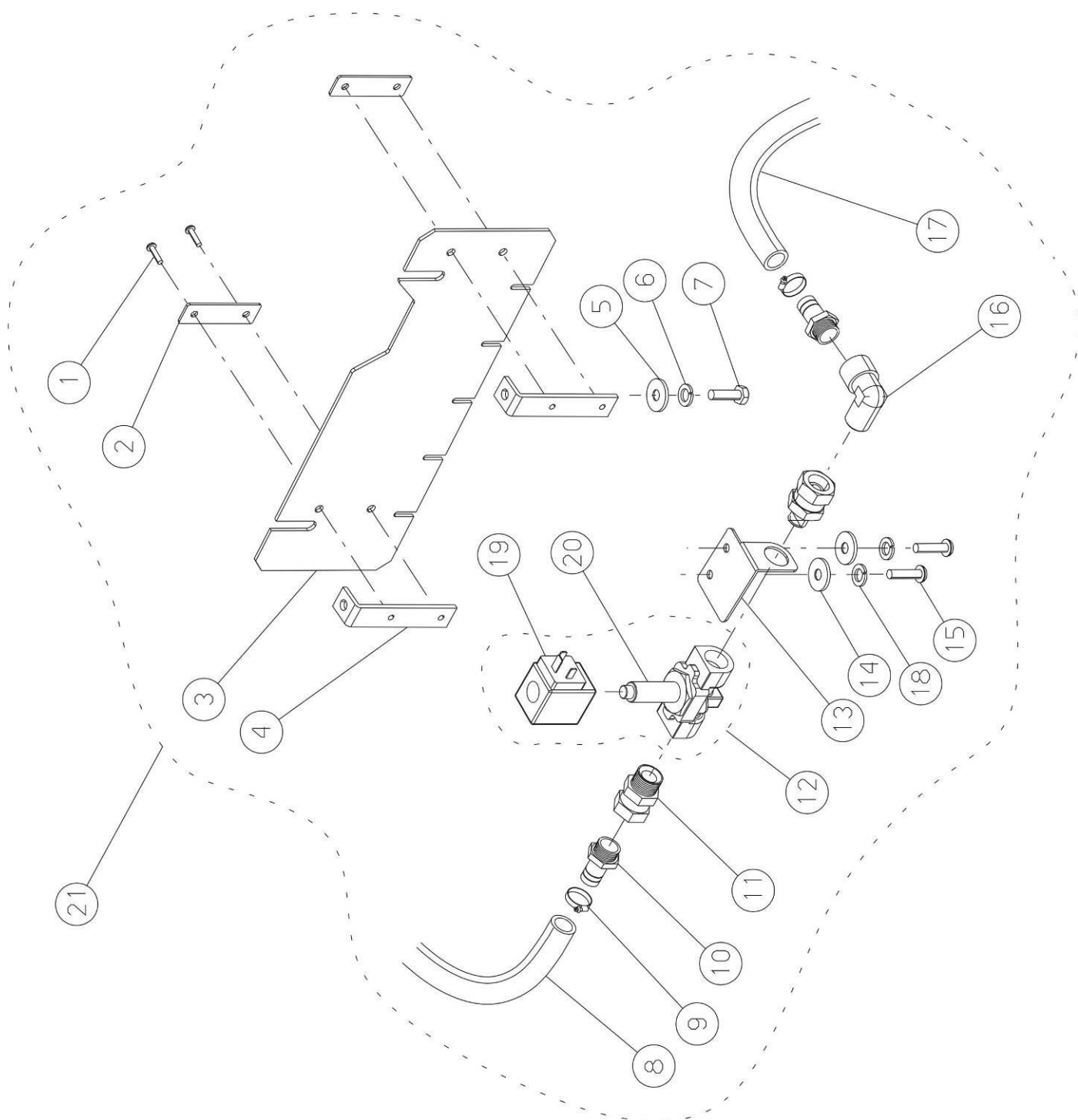
TAV.5



| N.Position | Code Num | Qta | Descrizione | Description | Description | Bezeichnung |
|------------|----------|-----|--|------------------------|--------------------------|-----------------------|
| 18N.05.001 | VB230 | 2 | VITE CIL. BRUGOLA M8x16 UNI 5931 | SCREW | VIS | SCHRAUBE |
| 18N.05.002 | RO255 | 2 | RONDELLA SPACCATA DIAM. 8 UNI 1751 | WASHER | RONDELLE | SCHIBE |
| 18N.05.003 | RO302 | 2 | RONDELLA SLARG.DIAM.8X24 UNI 6592/6 | WASHER | RONDELLE | SCHIBE |
| 18N.05.004 | SU675 | 1 | SUPPORTO LEVA REGOLAZIONE PIATTO | SUPPORT FOR PLATE REG | SUPPORT LEVIER REGUL. | HEBELLAGER |
| 18N.05.005 | RO301 | 1 | RONDELLA SLARGATA D.6x18 UNI 6592 Z | WASHER | RONDELLE | SCHIBE |
| 18N.05.006 | RO254 | 1 | RONDELLA SPACCATA DIAM. 6 UNI 1751 | WASHER | RONDELLE | SCHIBE |
| 18N.05.007 | VC229 | 1 | VITE CILIN.CROCE M6X16 UNI 7687 | SCREW | VIS | SCHRAUBE |
| 18N.05.008 | VP006 | 1 | POMELLO M8 FEMMINA A 6 LOBI | KNOB | POMMEAU | BALLENGRIFF |
| 18N.05.009 | PE321 | 1 | PERNO COMANDO REGOLAZIONE SPAZZOLA | BRUSH REGULATION PIN | PIVOT REGULATION BROS | BOLZEN |
| 18N.05.010 | BO254 | 2 | BOCCOLA FRIZIONE PERNO REGOL. SPAZZ | BUSH | COQUILLE | BUCHSE |
| 18N.05.011 | SU674 | 1 | SUPPORTO TIRANTE COMANDO REGOLAZ.PI | SUPPORT | SUPPORT TIRANT REGUL. | SPANNSTANGELAGER |
| 18N.05.012 | DT235 | 2 | DISTANZIALE REGOLAZIONE SPAZZOLA | BRUSH REGULATION SPAC | ENTRETOISE REGUL. BRO | DISTANZSTUCK |
| 18N.05.013 | DD205 | 1 | DADO M8 UNI 5588/65 ZNT | NUT | ECROU | MUTTER |
| 18N.05.014 | SN008 | 1 | SNODO (forcella) M8 (lunga) | JOINT | JOINT | GELLENK |
| 18N.05.015 | MI077 | 1 | PERNO CON MOLLA X FORCELLA M8 (lung | PIN | PIVOT | BOLZEN |
| 18N.05.016 | LV429 | 1 | LEVA REGOLAZIONE PIATTO | PLATE REGULATION LEVE | LEVIER REGULATION PLA | HEBEL |
| 18N.05.017 | MP620 | 4 | CARBONCINO PER MO538 | COAL FOR MO446 | CHARBON | KOEHLE |
| 18N.05.018 | MO538 | 1 | MOTORIDUTTORE SPAZZOLA 24V 400W 140 | BRUSH REDUCTION GEAR | MOTOREDUCTEUR BROSS | BUERSTENGETRIEBEMOTOR |
| 18N.05.019 | CH035 | 1 | LINGUETTA 6,3x6,3x30 FORMA B | TONGUE 6,3x6,3X30 | CLAVETTE | PASSFEDER |
| 18N.05.020 | VC411 | 1 | VITE CILIN.CROCE M5x8 UNI 7687 INOX | SCREW | VIS | ZYLINDERSCHRAUBE |
| 18N.05.021 | RO453 | 1 | ROSETTA SPACCATA D.5 UNI 1751 INOX | WASHER | RONDELLE | SCHIBE |
| 18N.05.022 | MI004 | 1 | FERMA TUBO | PIPE STOP | ARRET TUYAU | ROHRSPERRE |
| 18N.05.023 | SN003 | 2 | FORCELLA M8 | FORK | JOINT | GELLENK |
| 18N.05.024 | DT239 | 2 | DISTANZIALE D.20 d.10,1 Sp.2.5 ZNT. | SPACER | ENTRENOISE | DISTANZSTUCK |
| 18N.05.025 | MI005 | 2 | PERNO CON MOLLA PER FORCELLA M8 | PIN W. SPRING | PIVOT | BOLZEN MIT FEDER |
| 18N.05.026 | TP181 | 1 | TELAIO SUPPORTO MOTORE SPAZZOLA | BRUSH MOTOR SUPPORT F | CHASSIS SUPPORT MOTEU | BURSTENMOTOR LAGERCHA |
| 18N.05.027 | RO510 | 2 | RONDELLA SLARG.D.10x20 UNI 6592/69 | WASHER | RONDELLE | SCHIBE |
| 18N.05.028 | RO455 | 2 | RONDELLA SPACCATA DIAM. 8 UNI 1751 | WASHER | RONDELLE | SCHIBE |
| 18N.05.029 | VC447 | 2 | VITE CILIN.CROCE M8x16 UNI 7687 INO | SCREW | VIS M8x16 | SCHRAUBE |
| 18N.05.030 | WE260 | 4 | VITE A TESTA ESAGONALE 3/8"x3/4" | SCREW | VIS | SECHSECKIGE SCHRAUBE |
| 18N.05.031 | RO403 | 2 | RONDELLA NORM.DIAM. 6 UNI 6592/69 I | WASHER | RONDELLE | SCHIBE |
| 18N.05.032 | RO454 | 2 | RONDELLA SPACCATA DIAM. 6 UNI 1751 | WASHER | RONDELLE | SCHIBE |
| 18N.05.033 | VE443 | 2 | VITE ESAGONALE M6x16 UNI 5739 INOX | HEXAGONAL SCREW | VIS | SECHSECKIGE SCHRAUBE |
| 18N.05.034 | RC237 | 1 | RACCORDO A 90 GRADI PORTAGOMMA D.10 | 90 DEGREES JOINT | RACCORD 90 DEGRE | ANSCHLUSSSTUCK |
| 18N.05.035 | CA342 | 1 | CARTER PROTEZIONE SPAZ.20" NERO | BRUSH COVER (BLACK) | CARTER PROTECTION BROSS | BURSTENGEHAUSE |
| 18N.04.036 | FL071 | 1 | FLANGIA ATTACCO SPAZZOLA IN ALLUMIN | FLANGE | (NOIR) | (SCHWARZ) |
| 18N.05.037 | RO406 | 1 | RONDELLA NORM.DIAM. 12 UNI 6592/69 | INOX WASHER | FLASQUE | FLANSCH |
| 18N.05.038 | WS034 | 1 | VITE TPSCE 5/16 x3/4 UNC ZNT UNI593 | SCREW | RONDELLE | SCHIBE |
| 18N.05.039 | VA408 | 1 | VITE AUTOFILET. TC 3.9x16 INOX | SCREW | VIS | SCHRAUBE |
| 18N.05.040 | ML139 | 1 | MOLLA FISSAGGIO SPAZZOLA DELUX 43/5 | BRUSH FIXING SPRING | VIS | SCHRAUBE |
| 18N.05.041 | SZ030 | 1 | SPAZZOLA NYLON ICM 20 NEW C/MOLLA | NYLON BRUSH W/SPRING | RESSORT | FEDER |
| 18N.05.041 | SZ030A | 1 | SPAZZOLA ACCIAIO ICM 20 NEW C/MOLLA | STEEL BRUSH W/SPRING | BROSSE EN NYLON A/RES | NYLON BURSTE |
| 18N.05.041 | SZ030B | 1 | SPAZZOLA NYLON ICM 20 NEW C/MOLLA | BASSINE BRUSH W/SPRING | ACIER EN NYLON A/RES | STAHL BURSTE |
| 18N.05.041 | SZ030C | 1 | SPAZZOLA CARBONIO ICM 20 NEW C/MOLLA | CARBON BRUSH W/SPRING | BROSSE EN BASSINE A/RES | BASSINE BURSTE |
| 18N.05.041 | SZ030M | 1 | SPAZZOLA MOQUETTE ICM 20 NEW C/MOLLA | MOQUETTE BRUSH | BROSSE EN CARBONE A/RES | CARBON BURSTE |
| 18N.05.042 | VG020 | 1 | GRANO M6x8 C/PUNTA UNI 5927 | W/SPRING | BROSSE EN MOQUETTE A/RES | MOQUETTE BURSTE |
| 18N.05.043 | AL156 | 4 | ALBERO RUOTE | DOWEL | GRAIN | DUEBEL MIT SPITZE |
| 18N.05.044 | SG009 | 4 | ANELLO SEEGER PER EST. D.17 UNI 74 | WHEEL SHAFT | ARBRE DES ROUES | RADWELLE |
| 18N.05.045 | DD404 | 4 | DADO M6 UNI 5588 INOX | RING | BAGUE SEEGER | SEEGERRING |
| 18N.05.046 | RO454 | 4 | RONDELLA SPACCATA DIAM. 6 UNI 1751 | STAINLESS STEEL NUT | ECROU | MUTTER |
| 18N.05.047 | CS086 | 2 | CUSCINETTO ORIENTABILE PFL203 D.17 | WASHER | RONDELLE | SCHIBE |
| 18N.05.048 | RO501 | 4 | RONDELLA SLARG.D.6X18 UNI6592/69 IN | BEARING | ROULEMENT A BILLES | KUGELLAGER |
| 18N.05.049 | VE444 | 4 | VITE ESAGONALE M6x20 UNI 5739 INOX | WASHER | RONDELLE | SCHIBE |
| 18N.05.050 | RT191 | 2 | RUOTA D.80 C/CUSCINETTO + PARAFILO | SCREW | VIS | SECHSECKIGE SCHRAUBE |
| 18N.05.051 | RT195 | 2 | PARAFILO PER RT191 | WHEEL D.80 W/BEARING | ROUE D.80 | RAD D.80 MIT LAGER UN |
| 18N.05.052 | VE451 | 2 | VITE ESAGONALE M6x45 12/9 INOX - | WIRE COVER | GARDE-FIL POUR RT191 | MANTEL FUR RT191 |
| 18N.05.053 | ML127 | 2 | MOLLA A TAZZA REGGISPINTA 17.3x27.7 | EXHAGONAL SCREW | VIS M6x45 | SCHRAUBE |
| 18N.05.054 | RT190 | 2 | RUOTA D.200 C/CUSCINETTO FORO 17 | SPRING | RESSORT BAUER D.17 | FEDER |
| 18N.05.055 | TA091 | 2 | TAPPO RUOTA G48 | WHEEL D. 200 W/BEARIN | ROUE D.200 | RAD D.200 MIT LAGER |
| 18N.05.056 | RC114 | 1 | RACCORDO PER SCARICO ACIDO INOX | WHEEL PLUG | BOUCHON ROUE D=G-48 N | STOPFEN |
| 18N.05.057 | VE444 | 1 | VITE ESAGONALE M6x20 UNI 5739 INOX | UNION | RACCORD | ANSCHLUSS |
| 18N.05.058 | RO254 | 1 | RONDELLA SPACCATA DIAM. 6 UNI 1751 | SCREW | VIS | SECHSECKIGE SCHRAUBE |
| 18N.05.059 | RO403 | 4 | RONDELLA NORM.DIAM. 6 UNI 6592/69 I | WASHER | RONDELLE | SCHIBE |
| 18N.05.060 | DD404 | 1 | DADO M6 UNI 5588 INOX | WASHER | RONDELLE | SCHIBE |
| 18N.05.061 | RO254 | 2 | RONDELLA SPACCATA DIAM. 6 UNI 1751 | STAINLESS STEEL NUT | ECROU | MUTTER |
| 18N.05.062 | DD404 | 2 | DADO M6 UNI 5588 INOX | WASHER | RONDELLE | SCHIBE |
| 18N.05.063 | TP180 | 1 | TELAIO BASE | STAINLESS STEEL NUT | ECROU | MUTTER |
| 18N.05.064 | VE424 | 4 | VITE ESAGONALE M5X16 UNI 5737-77 IN | BASIC FRAME | CHASSIS DE BASE | CHASSIS |
| 18N.05.065 | VB411 | 1 | VITE CIL. BRUGOLA M5x16 UNI5931/77 | HEXAGONAL SCREW | VIS | SECHSECKIGE SCHRAUBE |
| 18N.05.066 | DD403 | 1 | DADO M5 UNI 5588/65 INOX | CHEESE-HEADED SCREW | VIS | ZYLINDERSCHRAUBE |
| 18N.05.067 | RO453 | 1 | ROSETTA SPACCATA D.5 UNI 1751 INOX | INOX NUT | ECROU | MUTTER |
| 18N.05.068 | TS080 | 1 | DISCO TRASCIN.SPAZZOLA ICM20 NEW C/MOLLA | WASHER | RONDELLE | SCHIBE |
| 18N.05.069 | DP017 | 1 | DISCO SPESSORATO NERO 20" | PAD HOLDER/BRUSH | DISCQUE ENTRENEUR A/ | SCHIBE |
| 18N.05.069 | DP013 | 1 | DISCO SPESSORATO ROSSO 20" | W/SPRING | DISCQUE NOIR | SCHIBE SCHWARZ |
| 18N.05.069 | DP016 | 1 | DISCO SPESSORATO MARRONE 20" | BLACK PAD | DISCQUE ROUGE | SCHIBE ROT |
| | | | | RED PAD | DISCQUE BRUN | SCHIBE BRAUN |

I20BNEW

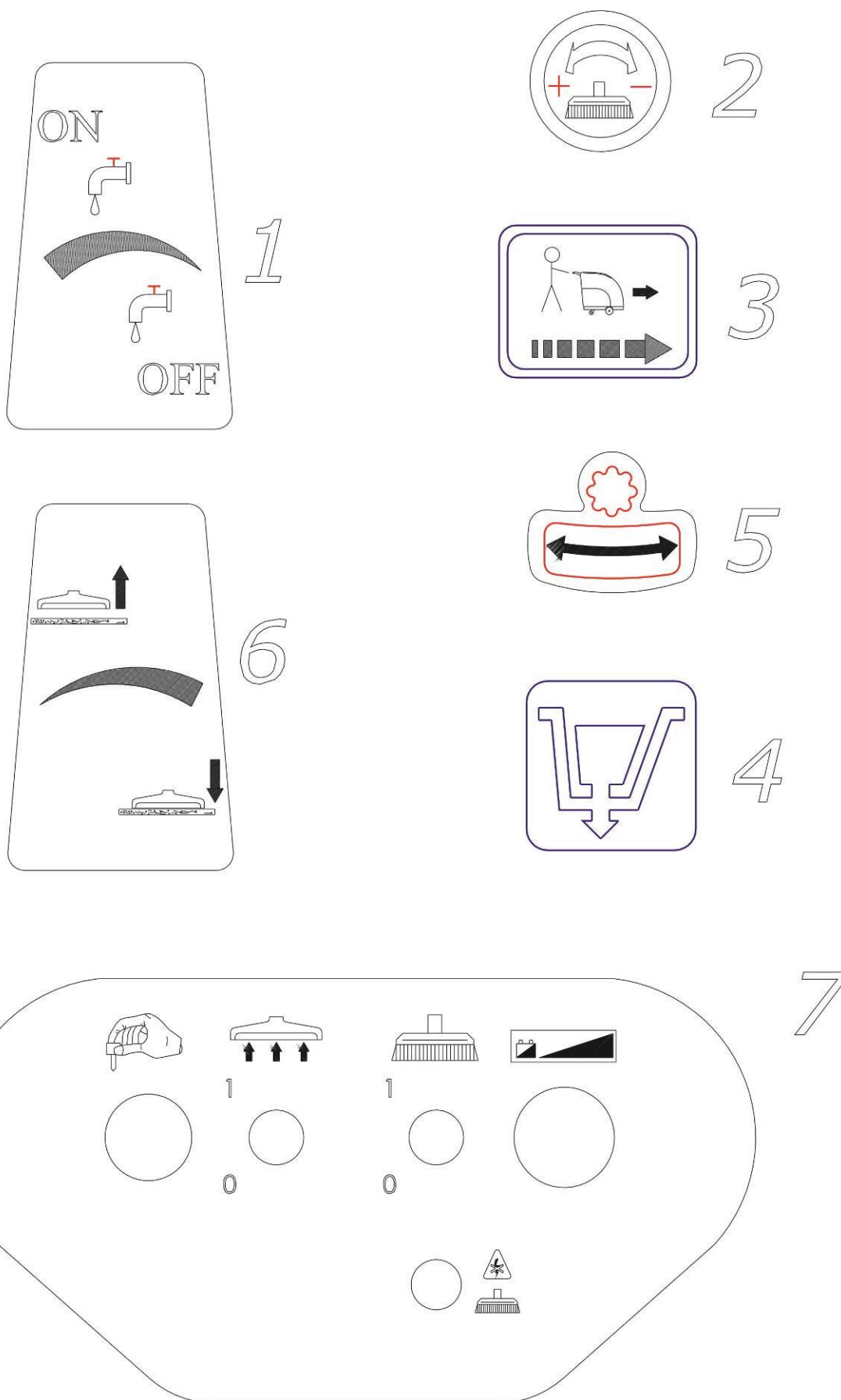
TAV.6



| N.Position | Code Num | Qta | Descrizione | Description | Description | Bezeichnung |
|------------|----------|-----|---|-----------------------|------------------------|------------------------|
| 18N.06.001 | VC420 | 4 | VITE CILIN.CROCE M6x8 UNI 7687 INOX | SCREW | VIS | SCHRAUBE |
| 18N.06.002 | LM715 | 2 | LISTELLO GOMMA PARASCHIZZI INOX | SPLASHGUARD RUBBER LI | BORD CAOUTCHOU GARDE- | SPRITZSCHUTZGUMMLEIS |
| 18N.06.003 | BP400 | 1 | BUMPER PARASCHIZZI ICN 16-18 NEW | SPLASH GUARD RUBBER | CAOUTCHOU GARDE-BOUE | SPRITZSCHUTZGUMMI |
| 18N.06.004 | SU695 | 2 | SUPPORTO GOMMA PARASCHIZZI INOX | STAINLESS STEEL SUPPO | SUPPORT INOX | EDELSTAHLSTUTZ |
| 18N.06.005 | RO404 | 2 | RONDELLA NORM.DIAM. 8 UNI 6592 INOX | INOX WASHER | RONDELLE | SCHEIBE |
| 18N.06.006 | RO454 | 2 | RONDELLA SPACCATA DIAM. 6 UNI 1751A | INOX WASHER | RONDELLE | SCHEIBE |
| 18N.06.007 | VE460 | 2 | VITE ESAGONALE M8x16 UNI 5739 INOX | SCREW | VIS | SECHSECKIGE SCHRAUBE |
| 18N.06.008 | TB389 | 1 | TUBO D.10 L=360mm | PIPE | TUYAU | ROHR |
| 18N.06.009 | FS002 | 2 | FASCETTA 12/20 INOX FASCIA 9 | CLAMP 12/20 | BANDE 12/20 INOX | SHELLE |
| 18N.06.010 | RC217 | 2 | RACCORDO PORTAG 3/8 MASCHIO P/GOMMA | UNION | RACCORD | VERBINDUNG |
| 18N.06.011 | RC017 | 2 | RACCORDO M/F 1/2"3/8" | UNION | RACCORD | ANSCHLUSS |
| 18N.06.012 | RB050 | 1 | ELETTROVALVOLA COMPLETA DI BOBINA 24V | SOLENOID VALVE | SOUPAPE ELECTRIQUE | ELEKTROVENTIL KPL. |
| 18N.06.013 | SU453 | 1 | SUPPORTO ELETTROVALVOLA | SOLENOID VALVE SUPPOR | SUPPORT ELECTROVANNE | ELEKTROVENTILSTUTZ |
| 18N.06.014 | RO403 | 2 | RONDELLA NORM.DIAM. 6 UNI 6592/69 I | INOX WASHER | RONDELLE | SCHEIBE |
| 18N.06.015 | VC422 | 2 | VITE CILIN.CROCE M6x12 UNI 7687 INO | SCREW | VIS | ZYLINDERSCHRAUBE |
| 18N.06.016 | RC073 | 1 | RACCORDO M/F 90° 3/8 | UNION | RACCORD | ANSCHLUSS |
| 18N.06.017 | TB025 | 1 | TUBO D.10 I.mm.250 | PIPE | TUYAU | ROHR |
| 18N.06.018 | RO454 | 2 | RONDELLA SPACCATA DIAM. 6 DIN 127B INOX | INOX WASHER | RONDELLE | SCHEIBE |
| 18N.06.019 | PY1293 | 1 | BOBINA ELETTROVALVOLA 24V | SOLENOID COIL | BOBINE DE SOLENOIDE | SPULE |
| 18N.06.020 | RB049 | 1 | CORPO ELETTROVALVOLA (SIRIO) | SOLENOID FRAME | CORP DE SOLENOIDE | MAGNETVENTIL |
| 18N.06.021 | KIT1257 | 1 | KIT ELETTROVALVOLA I16/18NEW (RB050) | SOLENOID VALVE KIT | KIT SOUPAPE ELECTRIQUE | KIT ELEKTROVENTIL KPL. |

I16/18BNEW

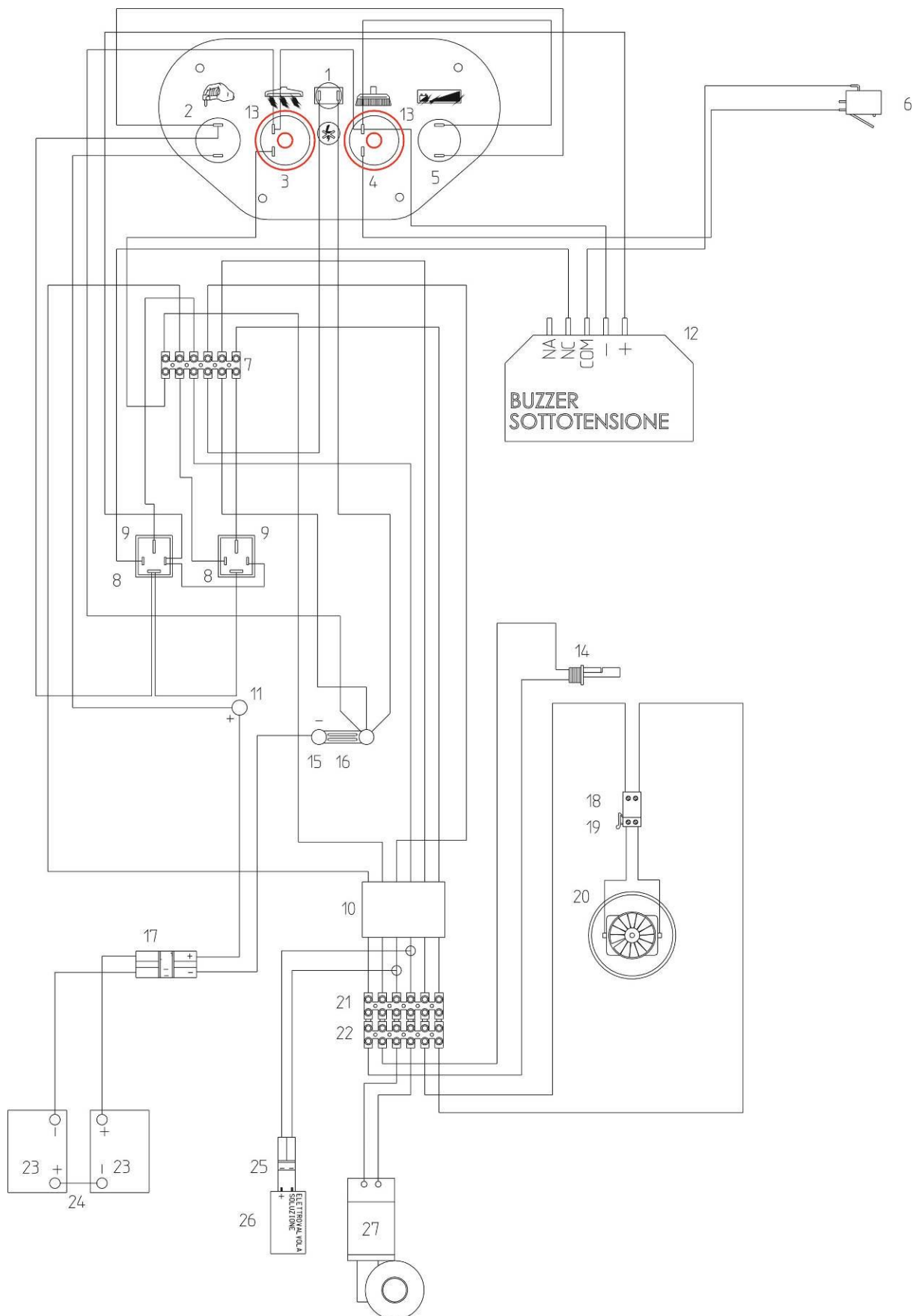
TAV.7



| N.Position | Code Num | Qta | Descrizione | Description | Description | Bezeichnung |
|------------|----------|-----|---|---------------|-----------------|-------------|
| 18N.05.001 | TG199 | 1 | TARGHETTA APERTURA ACQUA SOLUZIONE TARGHETTA REGOLAZIONE PRESSIONE | LABEL | ETIQUETTE | HAFTETIKETT |
| 18N.05.002 | TG206 | 1 | SPAZZOLA | LABEL | ETIQUETTE | HAFTETIKETT |
| 18N.05.003 | TG094 | 1 | TARGHETTA AVANZAMENTO | LABEL | ETIQUETTE | HAFTETIKETT |
| 18N.05.004 | TG298 | 1 | TARGHETTA SCARICO ACQUA SOLUZIONE | LABEL | ETIQUETTE | HAFTETIKETT |
| 18N.05.005 | TG111 | 2 | TARGHETTA REGOLAZIONE MANICO | LABEL | ETIQUETTE | HAFTETIKETT |
| 18N.05.006 | TG198 | 1 | TARGHETTA ALZA-ABBASSA SQUEEGEE | LABEL | ETIQUETTE | HAFTETIKETT |
| 18N.05.007 | PL046 | 1 | PLANCIA COMANDI C/INTERRUT.A LEVETT | CONTROL BOARD | TABLEAU DE BORD | BRUCKENDECK |

I20BNEW

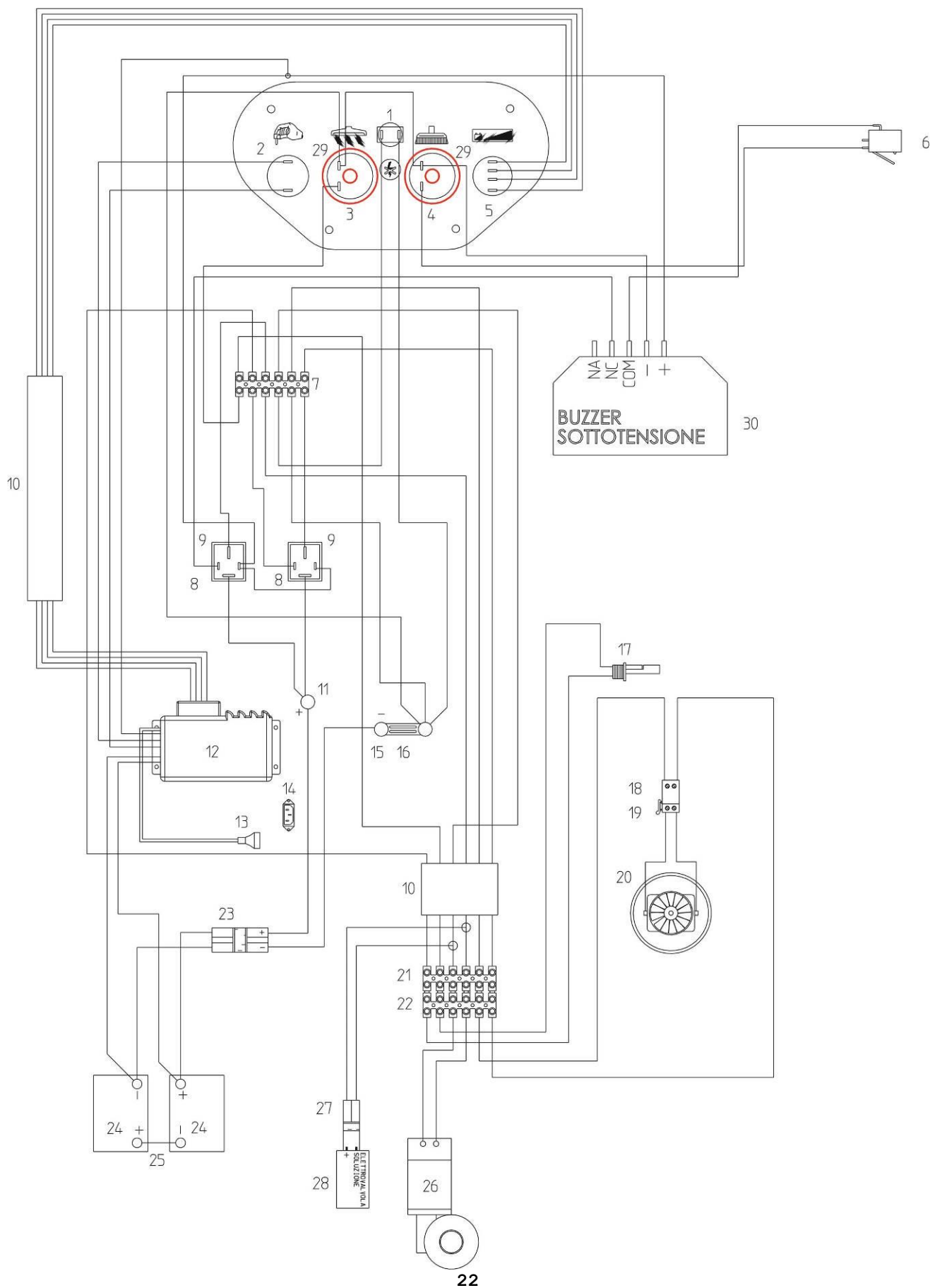
TAV.8_1



| N.Position | Code Num | Qta | Descrizione | Description | Description | Bezeichnung |
|------------|----------|-----|---|-----------------------|-----------------------|------------------------|
| 18N.08.001 | PY165 | 1 | INTERRUTTORE SALVAMOTORE 20A | OVERLOAD CUTOFF 20A 3 | INTERRUPTEUR | SCHALTER |
| 18N.08.002 | IN064 | 1 | INTERRUTTORE A CHIAVE (FORO • 19) | KEY SWITCH | INTERRUPTEUR | SCHLUESSELSCHALTER |
| 18N.08.003 | IN022 | 1 | INTERRUTTORE A SCATTO | SNAP SWITCH | INTERRUPTEUR A RESSOR | FEDERSCHALTER |
| 18N.08.004 | IN022 | 1 | INTERRUTTORE A SCATTO | SNAP SWITCH | INTERRUPTEUR A RESSOR | FEDERSCHALTER |
| 18N.08.005 | PY602 | 1 | INDICATORE STATO DI CARICA BATTERIE | BATTERY CHARGE INDICA | INDICATEUR DE CHARGE | BATTERIE STANDANZEIGE |
| 18N.08.006 | IN009 | 1 | MICRO SWITCH | MICROSWITCH | MICRO INTERRUPTEUR | MIKROSCHALTER |
| 18N.08.007 | PY550 | 1 | MORSETTIERA MAMMUT 6 POLI 433 LP NY | TERMINAL BOARD | BORNIER | KLEMMENBRETT |
| 18N.08.008 | SL024 | 2 | RELAY 80A 24V CON DIODO | RELAY 80A 24V | RELAY 80A 24V | RELAY 80A 24V MIT DIO |
| 18N.08.009 | SL021 | 2 | ZOCOLO PER RELAY | RELAY SUPPORT | SUPPORT RELAIS | RELAISOCKEL |
| 18N.08.010 | MI195 | 2 | GUAINA ROSSA D.20 L.300 | SHEATH | GAINE | MANTEL |
| 18N.08.011 | VE965 | 1 | VITE ESAGONALE M8X35 UNI5737/77 OTT BUZZER SOTTOTENSIONE C/BLOCCO FORCHE | SCREW | VIS | SCHRAUBE |
| 18N.08.012 | PY640 | 1 | 24V | BATTERIES HORN BUZZER | BATTERIE BUZZER | BATTERIEBUZZER |
| 18N.08.013 | IN039 | 2 | CAPPUCCIO X INTERRUTTORI A LEVETTA | CAP | COUVRE-INTERRUPTEUR | SCHUTZKAPPE FÜR DEN |
| 18N.08.014 | GL027 | 1 | GALLEGGIANTE ELETTRICO P500AH-011 | ELECTRIC FLOATER | FLOTEUR ELECTRIQUE | ELEKTRISCH SCHWIMMER |
| 18N.08.015 | VE965 | 2 | VITE ESAGONALE M8X35 UNI5737/77 OTT | SCREW | VIS | SCHRAUBE |
| 18N.08.016 | PY676 | 1 | FUSIBILE LAMELLARE 63A | FUSE | FUSIBLE | FLACHSICHERUNGSEINSATZ |
| 18N.08.017 | PY032R | 2 | SPINA CARICA BATTERIE 50A ROSSA | BATTERY CHARGER PLUG | EPINE CHARGEUR 50A RO | ROT STECKER 50A |
| 18N.08.018 | PY030 | 1 | SPINA FEMMINA TIPO 160BU | FEMALE PLUG | CONNECTEUR | STECKHUELSE |
| 18N.08.019 | PY031 | 1 | SPINA MASCHIO TIPO 163/2 | MALE PLUG | CONNECTEUR | STECKER |
| 16N.08.020 | MO448 | 1 | MOTORE ASPIRAZIONE I16/18NEW BATTER | VAC MOTOR I16/18NEW B | MOTEUR ASPIRATION | ANSAUGMOTOR |
| 18N.08.021 | PY674 | 1 | MORSETTIERA 6 POLI FV 51 FEMMINA | TERMINAL BOARD | BORNE | 6-POLIGES HOHLKLEMMEN |
| 18N.08.022 | PY681 | 1 | MORSETTIERA 6 POLI FV 51 MASCHIO | TERMINAL BOARD | BORNE | 6-POLIGES GEWINDEBOHR |
| 18N.08.023 | BT999 | 2 | BATTERIA | BATTERY | BATTERIE | BATTERIE |
| 18N.08.024 | PY001 | 1 | CAVO COLLEGAM. BATTERIE S=10mmq L=3 | BATTERY CONNECT.CABLE | CABLE | BATTERIEKABEL |
| 18N.08.025 | PY548 | 1 | CONNETTORE X ELETTROVALVOLA | CONNECTOR FOR SOLENOI | CONNECTEUR | STECKER |
| 18N.08.026 | RB050 | 1 | ELETTROVALVOLA COMPLETA DI BOBINA 2 | SOLENOID VALVE | SOUPAPE ELECTRIQUE | ELEKTROVENTIL KPL. |
| 18N.08.027 | MO538 | 1 | MOTORIDUTTORE SPAZZOLA 24V 400W 140 | BRUSH REDUCTION GEAR | MOTOREDUCTEUR BROSE | BUERSTENGETRIEBEMOTOR |

I20BNEW

TAV.8_2



| N.Position | Code Num | Qta | Descrizione | Description | Description | Bezeichnung |
|------------|----------|-----|--|-----------------------|-----------------------|-----------------------|
| 18N.08.001 | PY165 | 1 | INTERRUTTORE SALVAMOTORE 20A | OVERLOAD CUTOFF 20A 3 | INTERRUPTEUR | SCHALTER |
| 18N.08.002 | IN064 | 1 | INTERRUTTORE A CHIAVE (FORO • 19) | KEY SWITCH | INTERRUPTEUR | SCHLUESSELSCHALTER |
| 18N.08.003 | IN022 | 1 | INTERRUTTORE A SCATTO | SNAP SWITCH | INTERRUPTEUR A RESSOR | FEDERSCHALTER |
| 18N.08.004 | IN022 | 1 | INTERRUTTORE A SCATTO | SNAP SWITCH | INTERRUPTEUR A RESSOR | FEDERSCHALTER |
| 18N.08.005 | PY1226 | 1 | INDICATORE STATO DI CARICA BATTERIE | BATTERY CHARGE INDICA | INDICATEUR DE CHARGE | BATTERIE STANDANZEIGE |
| 18N.08.006 | IN009 | 1 | MICRO SWITCH | MICROSWITCH | MICRO INTERRUPTEUR | MIKROSCHALTER |
| 18N.08.007 | PY550 | 1 | MORSETTIERA MAMMUT 6 POLI 433 LP NY | TERMINAL BOARD | BORNIER | KLEMMENBRETT |
| 18N.08.008 | SL024 | 2 | RELAY 80A 24V CON DIODO | RELAY 80A 24V | RELAY 80A 24V | RELAY 80A 24V MIT DIO |
| 18N.08.009 | SL021 | 2 | ZOCCO PER RELAY | RELAY SUPPORT | SUPPORT RELAIS | RELAISOCKEL |
| 18N.08.010 | MI195 | 2 | GUAINA ROSSA D.20 L.300 | SHEATH | GAINE | MANTEL |
| 18N.08.011 | VE965 | 1 | VITE ESAGONALE M8X35 UNI5737/77 OTT | SCREW | VIS | SCHRAUBE |
| 18N.08.012 | 1CAR150 | 1 | CARICA BATTERIE CB HF 750 24V 12A | BATTERIES CHARGER | CHARGEUR DES BATTERIE | BATTERIELASTUNG |
| 18N.08.013 | PY925 | 1 | CAVO H05VV-F 3x0.75 2mt. C/PRESA CE | CABLE H05VV-F 3x0.75 | CABLE | KABEL |
| 18N.08.014 | PY307 | 1 | SPINETTA MASCHIO 250V 10A | PLUG | CONNECTEUR 250V 10A | STECKER |
| 18N.08.015 | VE965 | 2 | VITE ESAGONALE M8X35 UNI5737/77 OTT | SCREW | VIS | SCHRAUBE |
| 18N.08.016 | PY676 | 1 | FUSIBILE LAMELLARE 63A | FUSE | FUSIBLE | FLACHSICHERUNGSEINSAT |
| 18N.08.017 | GL027 | 1 | GALLEGGIANTE ELETTRICO P500AH-011 | ELECTRIC FLOATER | FLOTEUR ELECTRIQUE | ELEKTRISCH SCHWIMMER |
| 18N.08.018 | PY030 | 1 | SPINA FEMMINA TIPO 160BU | FEMALE PLUG | CONNECTEUR | STECKHUELSE |
| 18N.08.019 | PY031 | 1 | SPINA MASCHIO TIPO 163/2 | MALE PLUG | CONNECTEUR | STECKER |
| 18N.08.020 | MO448 | 1 | MOTORE ASPIRAZIONE I16/18NEW BATTER | VAC MOTOR I16/18NEW B | MOTEUR ASPIRATION | ANSAUGMOTOR |
| 18N.08.021 | PY674 | 1 | MORSETTIERA 6 POLI FV 51 FEMMINA | TERMINAL BOARD | BORNE | 6-POLIGES HOHLKLEMMEN |
| 18N.08.022 | PY681 | 1 | MORSETTIERA 6 POLI FV 51 MASCHIO | TERMINAL BOARD | BORNE | 6-POLIGES GEWINDEBOHR |
| 18N.08.023 | PY032R | 2 | SPINA CARICA BATTERIE 50A ROSSA | BATTERY CHARGER PLUG | EPINE CHARGEUR 50A RO | ROT STECKER 50A |
| 18N.08.024 | BT999 | 2 | BATTERIA | BATTERY | BATTERIE | BATTERIE |
| 18N.08.025 | PY001 | 1 | CAVO COLLEGAM. BATTERIE S=10mmq L=3 | BATTERY CONNECT.CABLE | CABLE | BATTERIEKABEL |
| 18N.08.026 | MO538 | 1 | MOTORIDUTTORE SPAZZOLA 24V 400W 140 | BRUSH REDUCTION GEAR | MOTOREDUCTEUR BROSSSE | BUERSTENGETRIEBEMOTOR |
| 18N.08.027 | PY548 | 1 | CONNETTORE X ELETTROVALVOLA | CONNECTOR FOR SOLENOI | CONNECTEUR | STECKER |
| 18N.08.028 | RB050 | 1 | ELETTROVALVOLA COMPLETA DI BOBINA 2 | SOLENOID VALVE | SOUPAPE ELECTRIQUE | ELEKTROVENTIL KPL. |
| 18N.08.029 | IN039 | 2 | CAPPUCCIO X INTERRUTTORI A LEVETTA | CAP | COUVRE-INTERRUPTEUR | SCHUTZKAPPE FÜR DEN |
| 18N.08.030 | PY640 | 1 | BUZZER SOTTOTENSIONE C/BLOCCO FORCHE 24V | BATTERIES HORN BUZZER | BATTERIE BUZZER | BATTERIEBUZZER |

Mat. n.
Serial no.
Nr. de serie

Data di spedizione
Date of shipment
Date de spedition

Distributed by:

ING. O. FIORENTINI S.p.A.

“THE BEST IN FLOOR MACHINES”

FILIALI:

20132 MILANO – Fax. 02/2592779

Via Palmanova 211/a – Tel. 02/27207783 - 2564810

00012 Guidonia Montecelio (ROMA) – Fax. (0774)353419 - 353314

Via Ponte Corvo 20 – Tel. (0774)357184 - 353015

STABILIMENTO:

50030 PIANCALDOLI (FI) – Fax. 055/817144

Loc. Rombola – Tel. 055/8173610